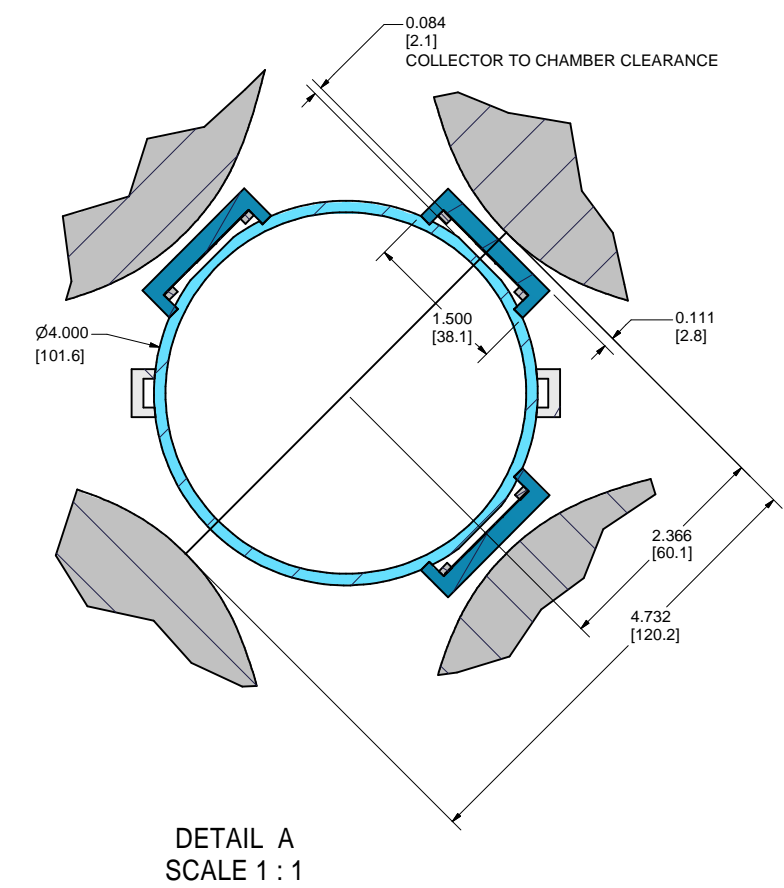
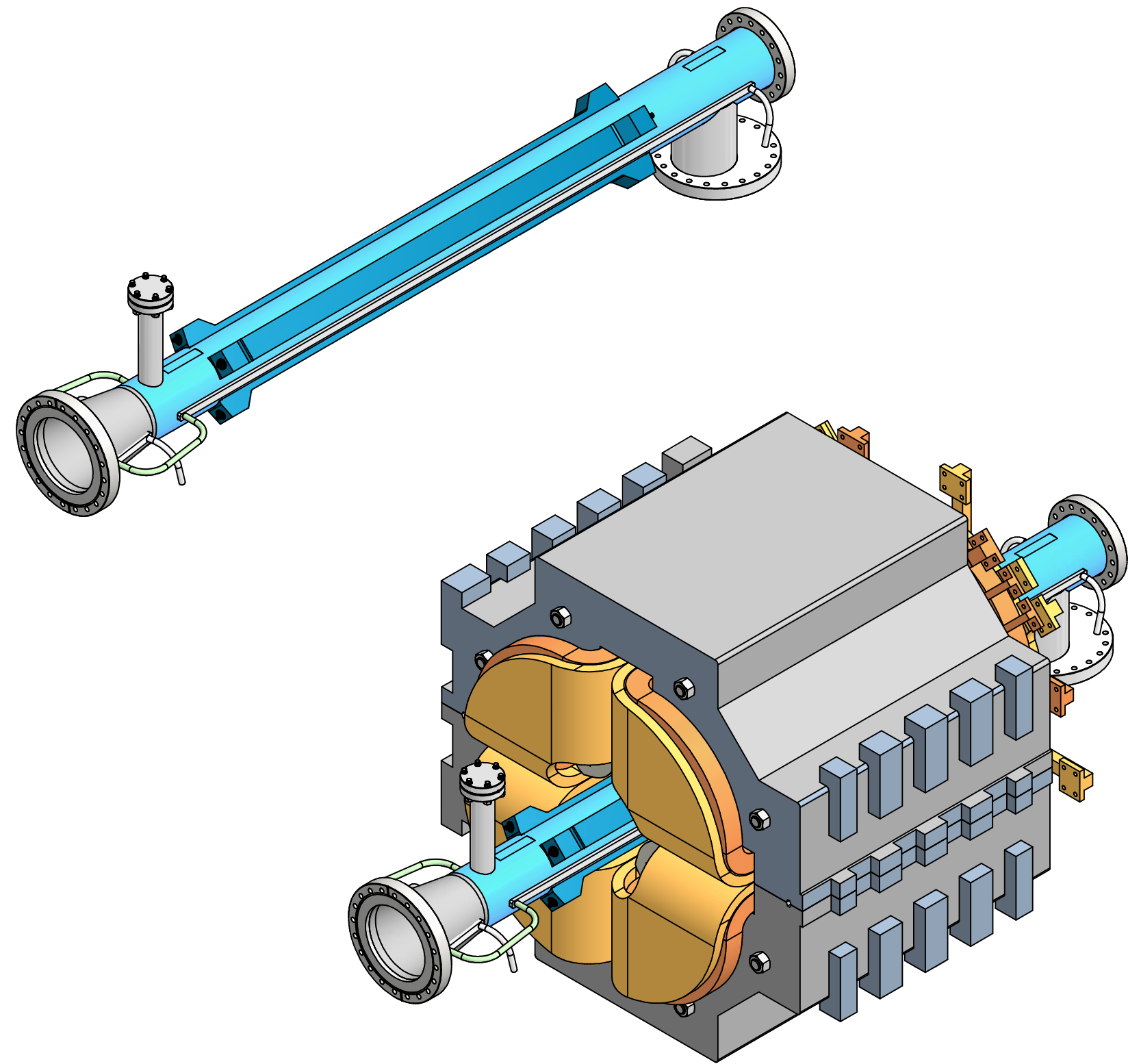


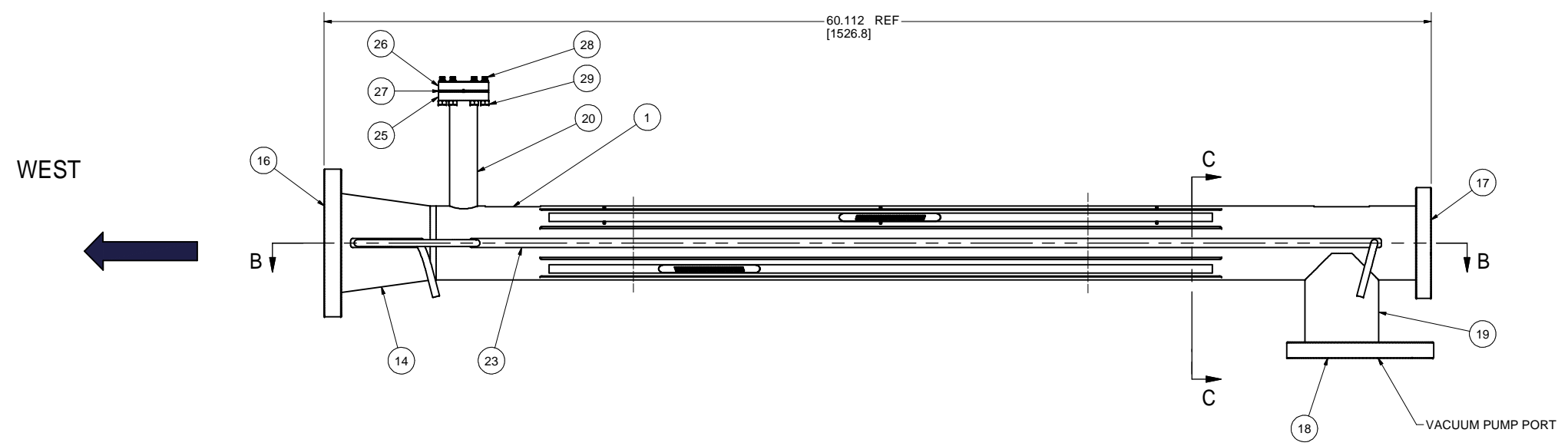
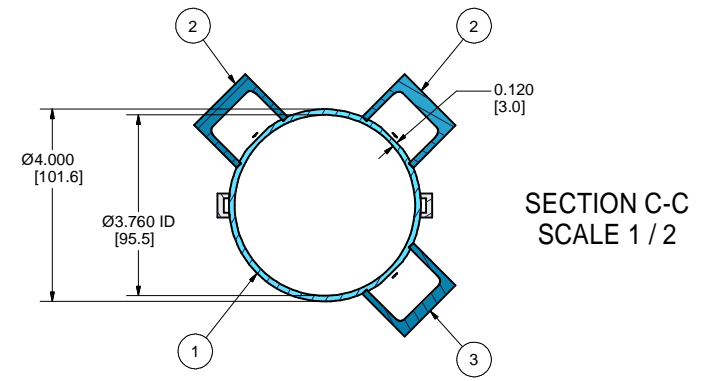
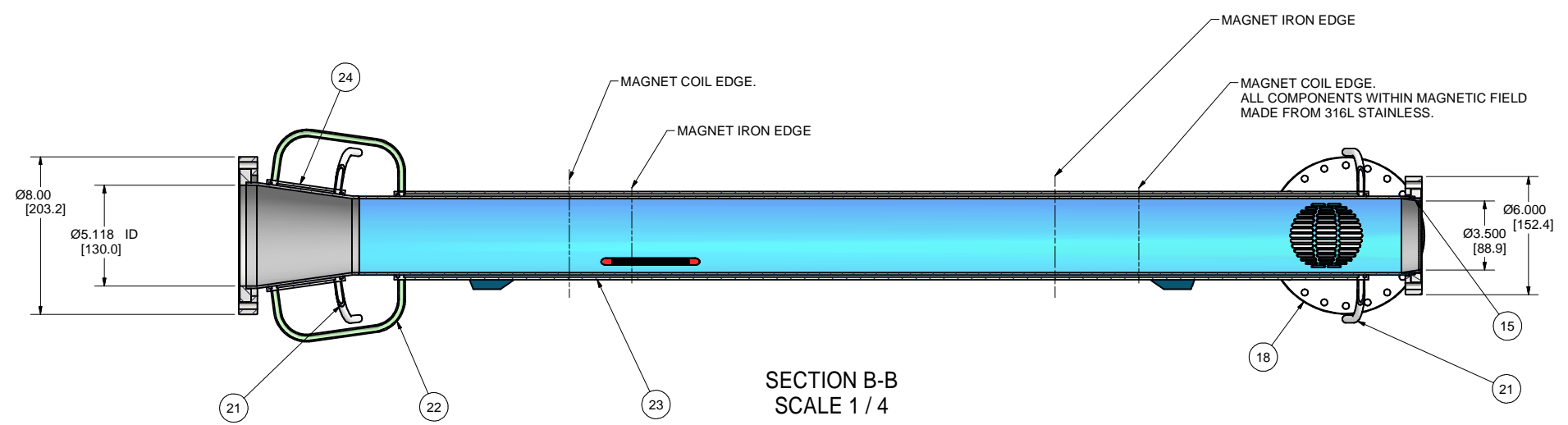
| REVISIONS | | | | |
|-----------|------|-------------|------|------|
| SYM. | ZONE | DESCRIPTION | DATE | APP. |
| | | | | |



| ITEM | DWG. NO. | DESCRIPTION | G1 | G2 | G3 | REMARKS | REV. | |
|-------------------------------|---|--|---|----------------------|--------------------|-------------|-----------------------------|------|
| | | | QUANTITY | | | | | |
| PRINT DISTR. | PLOT DATE: 1/10/2013 CAD FILE NAME: 6085-206.idw | | | | | | | |
| D 6085-206 REV. 1 OF 12 | CR-1 | UNLESS OTHERWISE SPECIFIED: DIMENSIONS ARE IN INCHES: TOLERANCES ON: .0 ± .02 .00 ± .010 .000 ± .005 FRACTIONS ± 1/32 ANGLES ± 0.5° ALL SURFACES ✓ | Cornell University Laboratory for Elementary-Particle Physics Floyd R. Newman Laboratory Robert R. Wilson Laboratory Ithaca, NY 14853 | | | | | REV. |
| | CHECKED BY: TIO APPROVED BY: TIO | | DRAWN BY: John Lanzoni | DRAWN FOR: MGB/YL | DATE: 11/7/2012 | SCALE: D | 6085-206 SH. NO. 1 OF 12 | REV. |

WEST

| REVISIONS | | | | |
|-----------|------|-------------|------|------|
| SYM. | ZONE | DESCRIPTION | DATE | APP. |
| | | | | |



| | | | | | |
|-----|----------|--|---|--|---|
| 29 | Purchase | 1/4-28 HEX NUT | 6 | | From CF Pkg. |
| 28 | Purchase | 1/4-28 x 1-1/4 12-POINT BOLT, SILVERPLATED | 6 | | MDC's #190061 |
| 27 | Purchase | 2-3/4" CF FLANGE COPPER GASKET | 1 | | MDC's #191004 |
| 26 | Purchase | 2-3/4" CF NON-ROT BLANK FLANGE | 1 | | MDC's #110008 |
| 25 | Purchase | F275150R CF ROTATABLE FLANGE | 1 | | |
| 24 | Sheet 12 | SHORT COOLING CHANNEL | 2 | | |
| 23 | Sheet 12 | LONG COOLING CHANNEL | 2 | | |
| 22 | Sheet 12 | 8 DEGREE JUMPER TUBE | 2 | | |
| 21 | Sheet 12 | COOLING TUBE | 4 | | |
| 20 | Sheet 12 | GAUGE TEE PIPE | 1 | | |
| 19 | Sheet 12 | PUMP TEE BRANCH PIPE | 1 | | |
| 18 | Sheet 11 | OFFSET 8" NON-ROT. FLANGE | 1 | | |
| 17 | Sheet 11 | 6" ROTATABLE FLANGE | 1 | | |
| 16 | Sheet 11 | 8" ROTATABLE FLANGE | 1 | | |
| 15 | Sheet 10 | TAPERED CHAMBER INSERT | 1 | | |
| 14 | Sheet 10 | REDUCER | 1 | | |
| 13 | Sheet 9 | HOLE INSERT | 1 | | SH.3 FOR LOCATION |
| 12 | Sheet 9 | SLOT COVER | 2 | | SH.3 FOR LOCATION |
| 11 | Sheet 9 | SLOT INSERT | 2 | | SH.3 FOR LOCATION |
| 3 | Sheet 6 | COLLECTOR ASSEMBLY - EDGE | 1 | | |
| 2 | Sheet 6 | COLLECTOR ASSEMBLY - MID | 2 | | |
| 1.2 | Sheet 5 | QUAD TIME RESOLVED BEAMPIPE - FEATURES | 1 | | |
| 1.1 | Sheet 4 | QUAD TIME RESOLVED BEAMPIPE - PORTS | 1 | | THIS SHEET SHOWS LOCATIONS OF ITEMS 11,12 & 13. |
| 1 | Sheet 2 | QUAD TIME RESOLVED BEAMPIPE | 1 | | |

| ITEM | DWG. NO. | DESCRIPTION | QUANTITY | | | REMARKS | REV. |
|------|----------|-------------|----------|----|----|---------|------|
| | | | G1 | G2 | G3 | | |
| | | | | | | | |

PRINT DISTR. **D** PLOT DATE: 1/10/2013
 CAD FILE NAME: 6085-206.idw

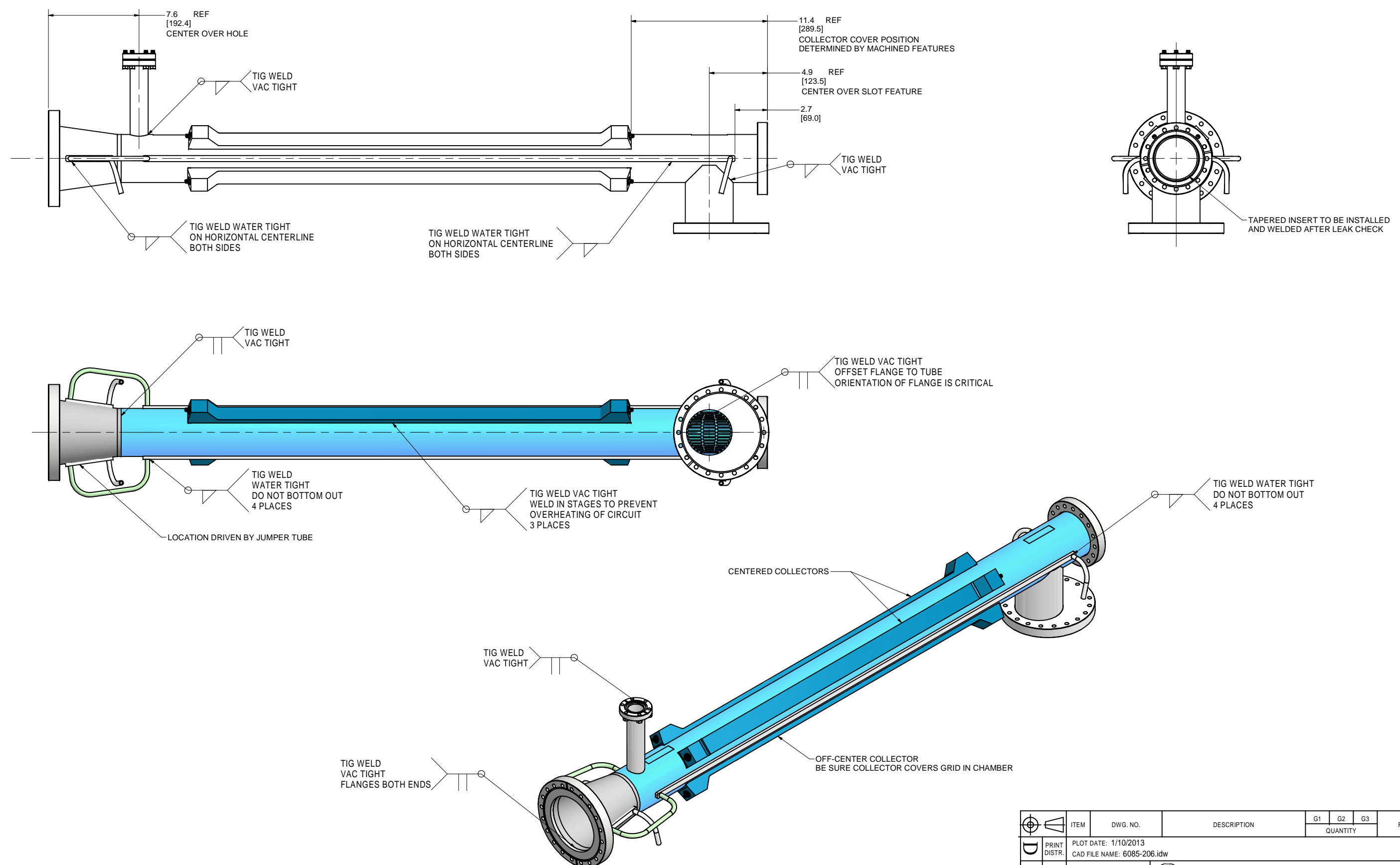
CR-1 UNLESS OTHERWISE SPECIFIED:
 DIMENSIONS ARE IN INCHES:
 TOLERANCES ON:
 .0 ± .02
 .00 ± .010
 .000 ± .005
 FRACTIONS ± 1/32
 ANGLES ± 0.5°
 ALL SURFACES

Cornell University
 Laboratory for Elementary-Particle Physics
 Floyd R. Newman Laboratory
 Robert R. Wilson Laboratory
 Ithaca, NY 14853

Quad 48W Time Resolved EC Detector Chamber:
COMPLETE ASSEMBLY

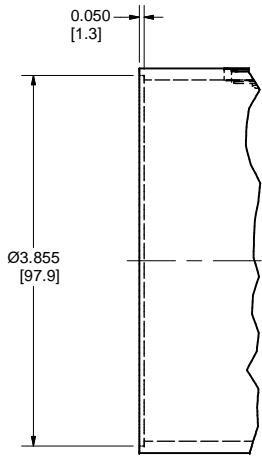
| | | | | | | |
|------------------|------------------------|-------------------|-----------------|-----------------|-----------------|------|
| CHECKED BY: TIO | DRAWN BY: John Lanzoni | DRAWN FOR: MGB/YL | DATE: 11/7/2012 | SCALE: D | 6085-206 | REV. |
| APPROVED BY: TIO | | | | | SH. NO. 2 OF 12 | |

| REVISIONS | | | |
|-----------|------|-------------|-----------|
| SYM. | ZONE | DESCRIPTION | DATE APP. |
| | | | |

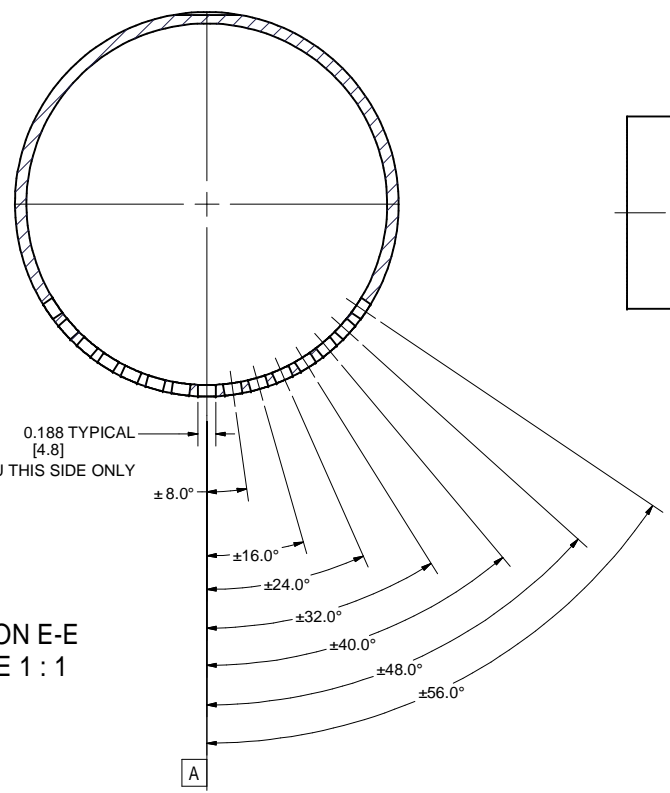
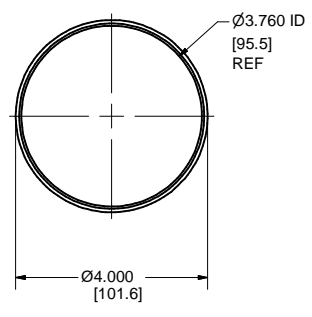


| ITEM | DWG. NO. | DESCRIPTION | G1 | G2 | G3 | REMARKS | REV. |
|-----------------------------|---|---|-------------------------------------|---|----------------------|--------------------|-------------|
| | | | QUANTITY | | | | |
| PRINT DISTR. | PLOT DATE: 1/10/2013 CAD FILE NAME: 6085-206.idw | | | | | | |
| 6085-206 SH. NO. 3 OF 12 | CR-1 | UNLESS OTHERWISE SPECIFIED: DIMENSIONS ARE IN INCHES: TOLERANCES ON: .0 ± .02 .00 ± .010 100 ± .005 FRACTIONS ± 1/32 ANGLES ± 0.5° ALL SURFACES | | Cornell University Laboratory for Elementary-Particle Physics Floyd R. Newman Laboratory Robert R. Wilson Laboratory Ithaca, NY 14853 | | | |
| | Quad 48W Time Resolved EC Detector Chamber: WELDING INSTRUCTIONS | | CHECKED BY: TIO APPROVED BY: TIO | DRAWN BY: John Lanzoni | DRAWN FOR: MGB/YL | DATE: 11/7/2012 | SCALE: D |

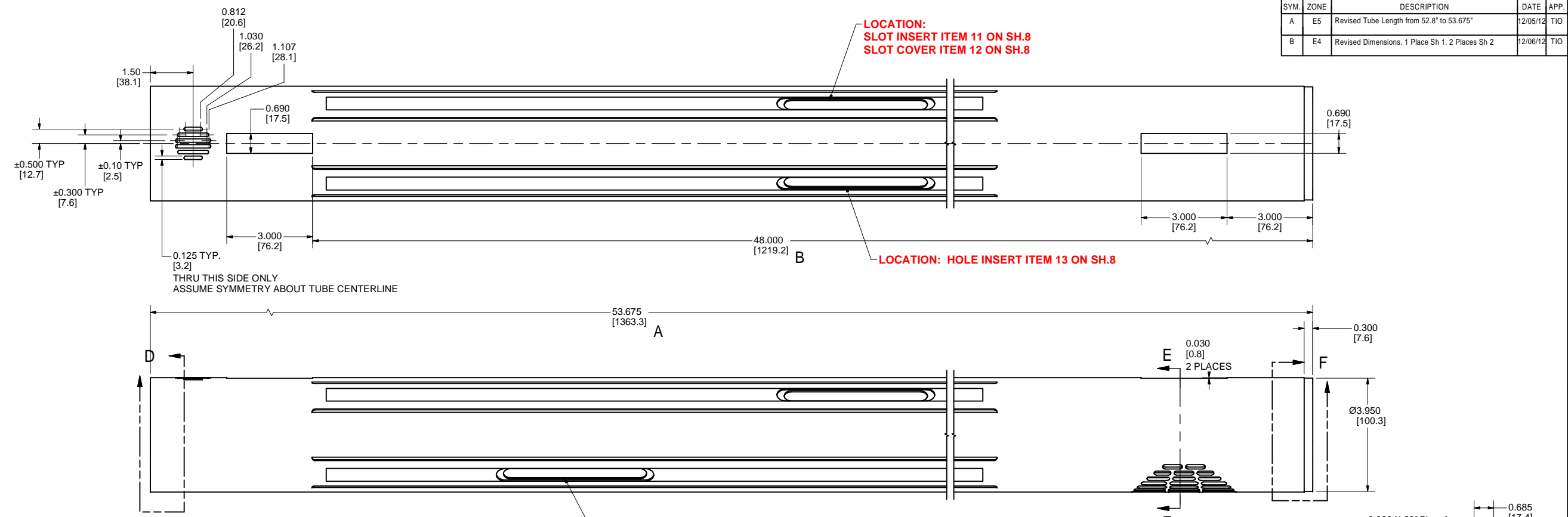
| REVISIONS | | | | |
|-----------|------|---|----------|------|
| SYM. | ZONE | DESCRIPTION | DATE | APP. |
| A | E5 | Revised Tube Length from 52.8" to 53.675" | 12/05/12 | TIO |
| B | E4 | Revised Dimensions. 1 Place Sh 1. 2 Places Sh 2 | 12/06/12 | TIO |



DETAIL D
SCALE 1 : 1



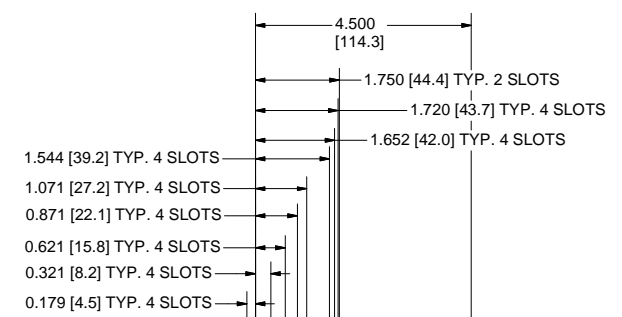
SECTION E-E
SCALE 1 : 1



LOCATION:
SLOT INSERT ITEM 11 ON SH.8
SLOT COVER ITEM 12 ON SH.8

LOCATION:
SLOT INSERT ITEM 11 ON SH.8
SLOT COVER ITEM 12 ON SH.8

LOCATION:
HOLE INSERT ITEM 13 ON SH.8



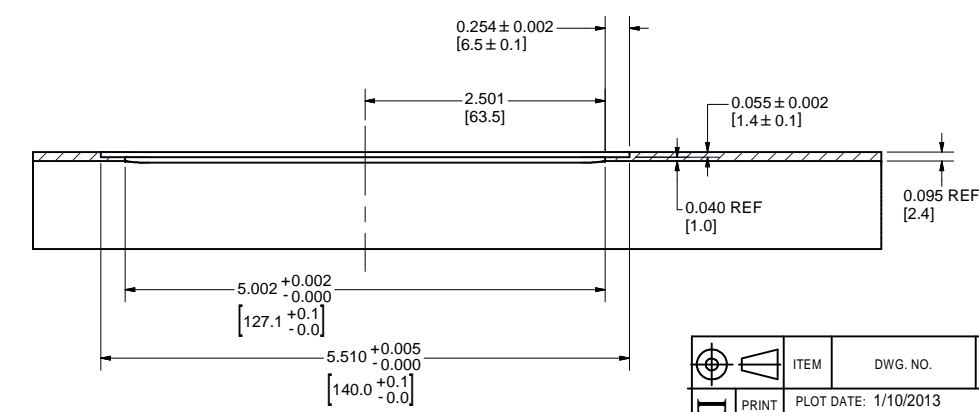
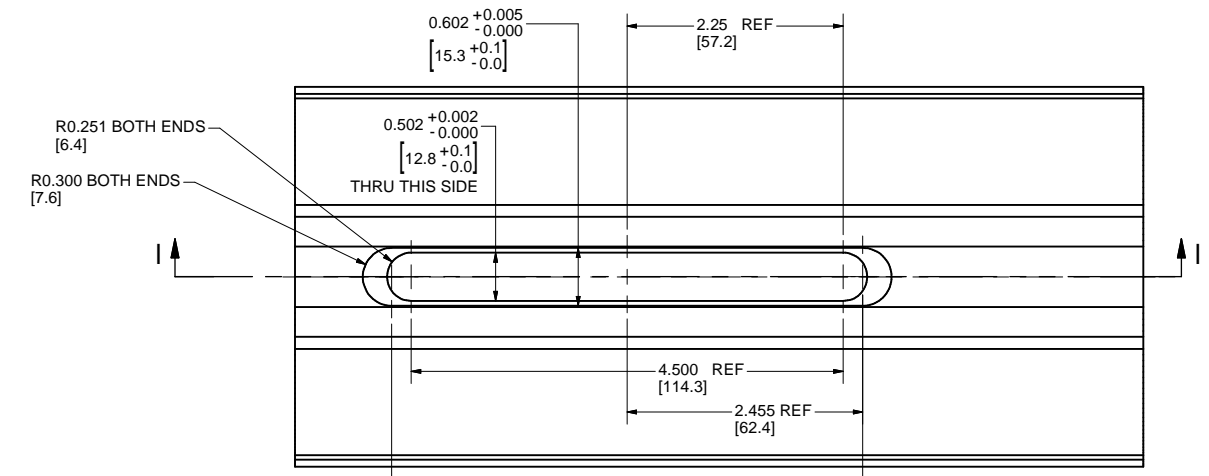
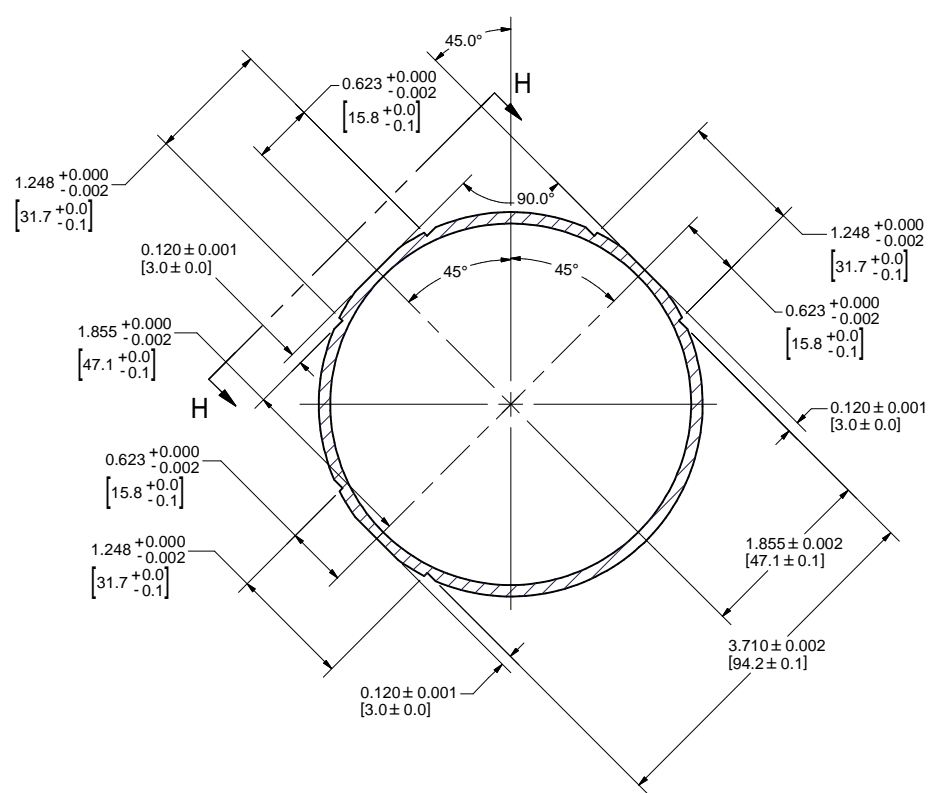
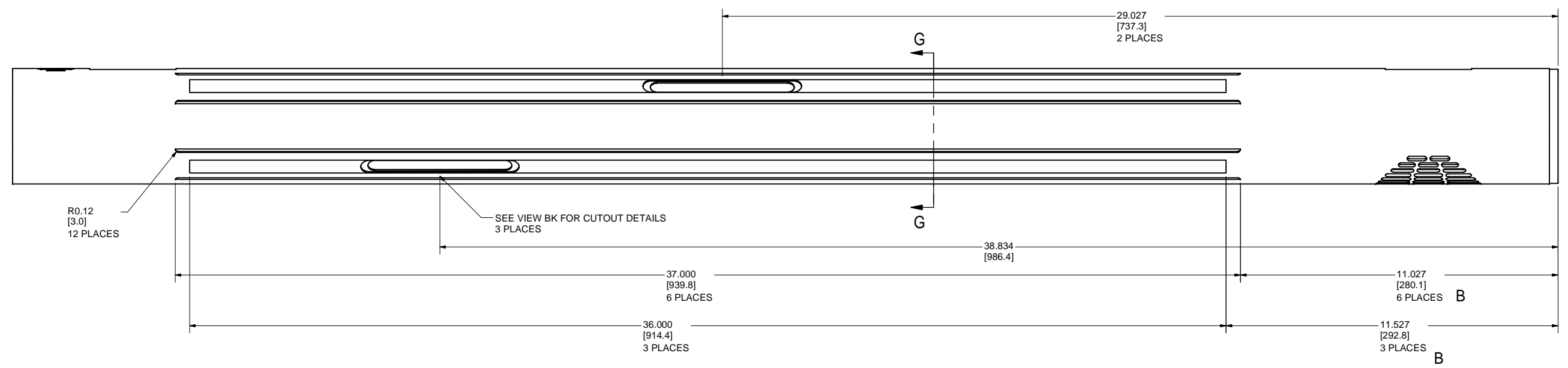
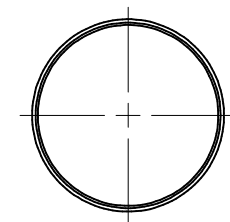
DETAIL F
SCALE 1 / 2

1.1 QUAD TR BEAMPIPE PORTS
 FILE NAME: 6085-206
 SHEET NO.: 4
 DFT. SCALE: 2:1
 MATERIAL: 316L
 QTY: 1
 NOTES: Continued on sheet 4

FOR MACHINING LUBRICANT USE ONLY
 ALKALINE DETERGENT LUBRICANT CIMSTAR 40
 OR EQUIVALENT APPROVED BY CORNELL LEPP

| ITEM | DWG. NO. | DESCRIPTION | QUANTITY | | | REMARKS | REV. |
|-----------------|------------------------|--|-----------------|----------|-----------------------------|---------|------|
| | | | G1 | G2 | G3 | | |
| PRINT DISTR. | 6085-206 | PLLOT DATE: 1/10/2013 CAD FILE NAME: 6085-206.idw | | | | | |
| CR-1 | | UNLESS OTHERWISE SPECIFIED: DIMENSIONS ARE IN INCHES: TOLERANCES ON: .0 ± .02 .00 ± .010 .000 ± .005 FRACTIONS ± 1/32 ANGLES ± 0.5° ALL SURFACES | | | | | |
| | | Cornell University Laboratory for Elementary-Particle Physics Floyd R. Newman Laboratory Robert R. Wilson Laboratory Ithaca, NY 14853 | | | | | |
| | | Quad 48W Time Resolved EC Detector Chamber: Chamber Tube - Ports | | | | | |
| CHECKED BY: TIO | DRAWN BY: John Lanzoni | DRAWN FOR: MGB/YL | DATE: 11/7/2012 | SCALE: D | 6085-206 SH. NO. 4 OF 12 | REV. B | |

| REVISIONS | | | | |
|-----------|------|---|----------|------|
| SYM. | ZONE | DESCRIPTION | DATE | APP. |
| A | | Changed Tube Length from 52.8" to 53.675" Sh. 3 | 12/5/12 | TIO |
| B | E1 | Changed Dimensions. 1 Place Sh 3. 2 Places Sh 4 | 12/06/12 | TIO |



1.2 TR BEAMPIPE FEATURES
 FILE NAME: 6085-206
 SHEET NO.: 5
 DFT. SCALE: 2:1
 MATERIAL: 316L
 QTY: 1
 NOTES: Continued from sheet 3

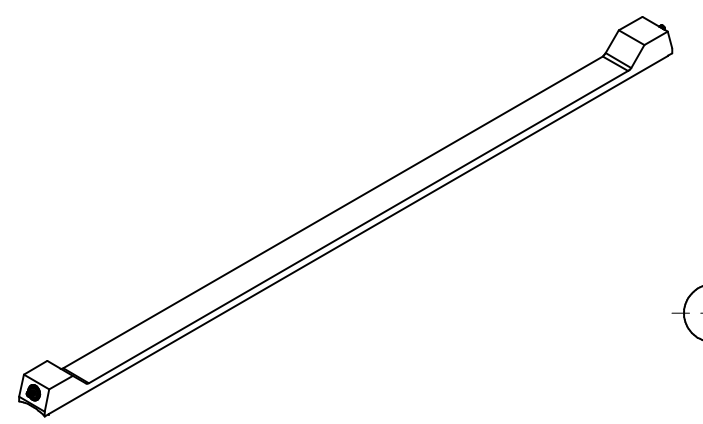
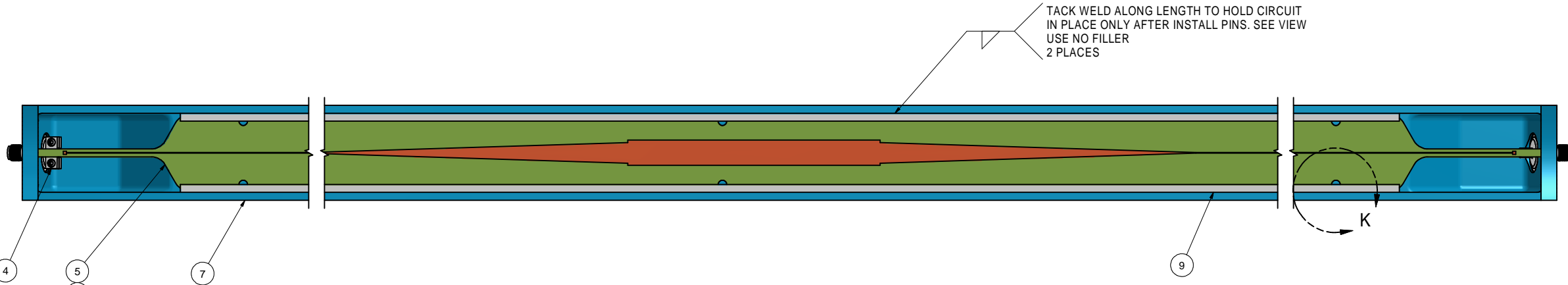
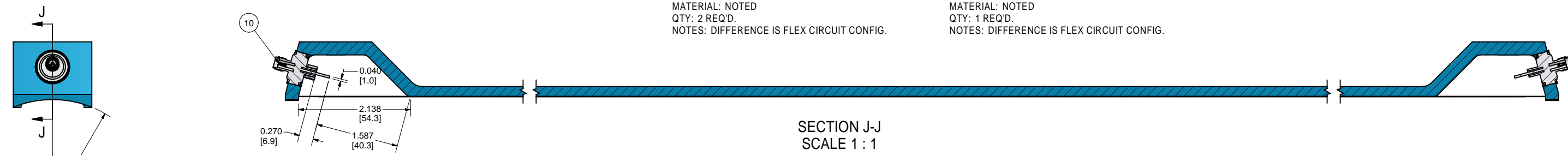
SECTION I-I SCALE 1:1
 FOR MACHINING LUBRICANT USE ONLY
 ALKALINE DETERGENT LUBRICANT CIMSTAR 40
 OR EQUIVALENT APPROVED BY CORNELL LEPP

| ITEM | DWG. NO. | DESCRIPTION | G1 | G2 | G3 | REMARKS | REV. |
|-----------------|------------------------|--|-----------------|----------|-----------------------------|---------|--------|
| | | | QUANTITY | | | | |
| PRINT DISTR. | 6085-206 | PLLOT DATE: 1/10/2013 CAD FILE NAME: 6085-206.idw | | | | | |
| CR-1 | | UNLESS OTHERWISE SPECIFIED: DIMENSIONS ARE IN INCHES: TOLERANCES ON: .0 ± .02 .00 ± .010 .000 ± .005 FRACTIONS ± 1/32 ANGLES ± 0.5° ALL SURFACES | | | | | |
| | | Cornell University Laboratory for Elementary-Particle Physics Floyd R. Newman Laboratory Robert R. Wilson Laboratory Ithaca, NY 14853 | | | | | |
| | | Quad 48W Time Resolved EC Detector Chamber: Chamber Tube - Features | | | | | |
| CHECKED BY: TIO | DRAWN BY: John Lanzoni | DRAWN FOR: MGB/YL | DATE: 11/7/2012 | SCALE: D | 6085-206 SH. NO. 5 OF 12 | | REV. B |

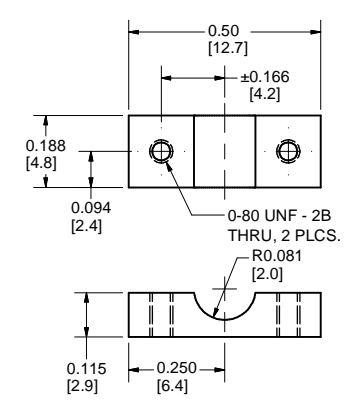
| REVISIONS | | | |
|-----------|------|-------------|-----------|
| SYM. | ZONE | DESCRIPTION | DATE APP. |
| | | | |

2 COLLECTOR ASSEMBLY - MID
 FILE NAME: 6085-206
 SHEET NO.: 6
 DFT. SCALE: 1 : 1
 MATERIAL: NOTED
 QTY: 2 REQ'D.
 NOTES: DIFFERENCE IS FLEX CIRCUIT CONFIG.

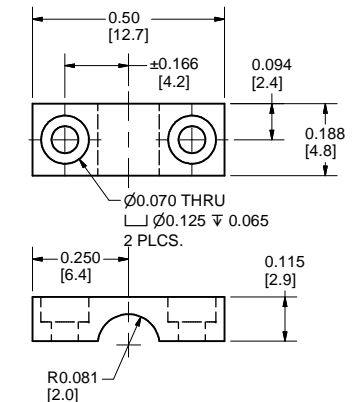
3 COLLECTOR ASSEMBLY - EDGE
 FILE NAME: 6085-206
 SHEET NO.: 6
 DFT. SCALE: 1 : 1
 MATERIAL: NOTED
 QTY: 1 REQ'D.
 NOTES: DIFFERENCE IS FLEX CIRCUIT CONFIG.



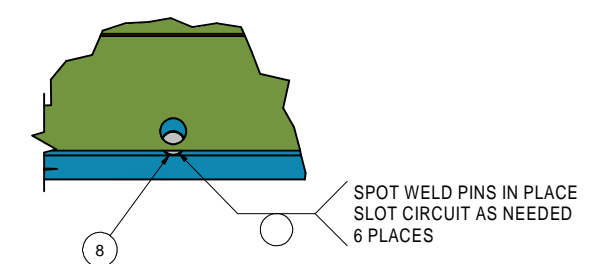
8 CIRCUIT PIN
 FILE NAME: 6085-206
 SHEET NO.: 6
 DFT. SCALE: 5 : 1
 MATERIAL: 316L SST
 QTY: 18 TOTAL
 NOTES:



4.1 CLAMP BOTTOM
 FILE NAME: 6085-206
 SHEET NO.: 6
 DFT. SCALE: 4 : 1
 MATERIAL: ALUMINUM
 QTY: 6 REQ'D.
 NOTES:

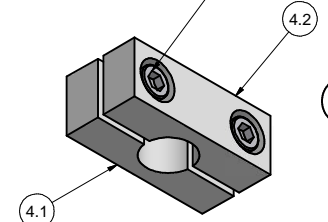


4.2 CLAMP TOP
 FILE NAME: 6085-206
 SHEET NO.: 6
 DFT. SCALE: 4 : 1
 MATERIAL: ALUMINUM
 QTY: 6 REQ'D.
 NOTES:



DETAIL K
 SCALE 2 : 1
 CLAMP NOT SHOWN

HEX SC HD CAP SCR
 0-80 UNF x 0.1875 LG.
 2 PER SET.



CLAMP SET - 6 TOTAL

4 CIRCUIT CLAMP SET
 FILE NAME: 6085-206
 SHEET NO.: 6
 DFT. SCALE: 4 : 1
 MATERIAL: NOTED
 QTY: 6 SETS TOTAL
 NOTES:

FOR MACHINING LUBRICANT USE ONLY
 ALKALINE DETERGENT LUBRICANT CIMSTAR 40
 OR EQUIVALENT APPROVED BY CORNELL LEPP

| ITEM | DWG. NO. | DESCRIPTION | G1 | G2 | G3 | REMARKS | REV. |
|------|------------|-----------------------------|----|----|----|---------|------|
| 10 | Purchase | SST 50 OHM SMA | 4 | 2 | | | |
| 9 | Sheet 7 | CIRCUIT CLAMP | 4 | 2 | | | |
| 8 | This Sheet | CIRCUIT PIN | 12 | 6 | | | |
| 7 | Sheet 8 | COLLECTOR COVER | 2 | 1 | | | |
| 6 | Sheet 7 | FLEX CIRCUIT - EDGE | | 1 | | | |
| 5 | Sheet 7 | FLEX CIRCUIT - STRAIGHT MID | 2 | | | | |
| 4 | This Sheet | CIRCUIT CLAMP SET | 4 | 2 | | | |
| 3 | This Sheet | COLLECTOR ASSEMBLY - EDGE | | 1 | | | |
| 2 | This Sheet | COLLECTOR ASSEMBLY - MID | 2 | | | | |

PRINT DISTR. 6085-206

PLOT DATE: 1/10/2013
 CAD FILE NAME: 6085-206.idw

UNLESS OTHERWISE SPECIFIED:
 DIMENSIONS ARE IN INCHES:
 TOLERANCES ON:
 .0 ± .02
 .00 ± .010
 .000 ± .005
 FRACTIONS ± 1/32
 ANGLES ± 0.5°
 ALL SURFACES

Cornell University
 Laboratory for Elementary-Particle Physics
 Robert R. Wilson Laboratory
 Ithaca, NY 14853

Floyd R. Newman Laboratory

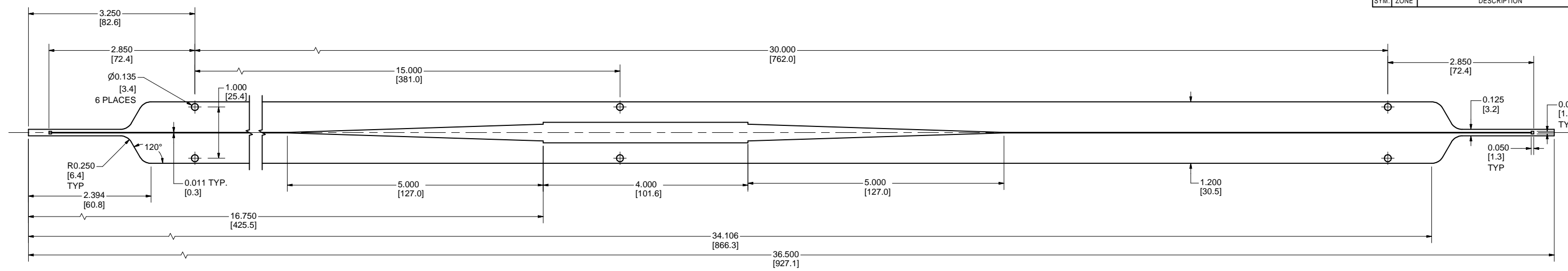
Quad 48W Time Resolved EC Detector Chamber:
 COLLECTOR ASSEMBLY & DETAILS

CHECKED BY: TIO
 APPROVED BY: TIO

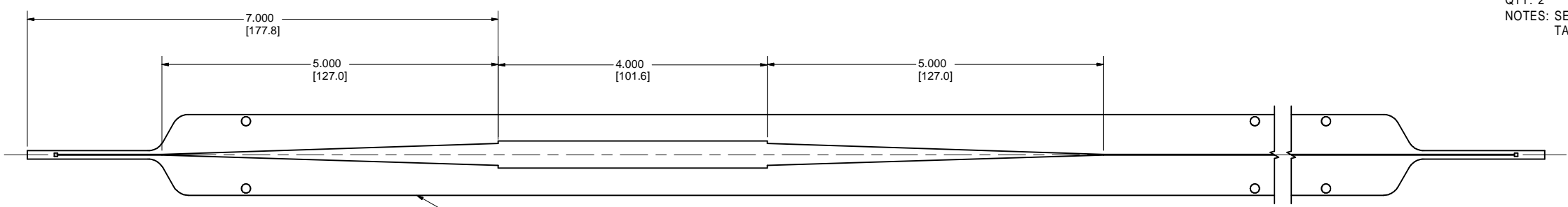
DRAWN BY: John Lanzoni
 DRAWN FOR: MGB/YL
 DATE: 11/7/2012
 SCALE: D

6085-206
 SH. NO. 6 OF 12

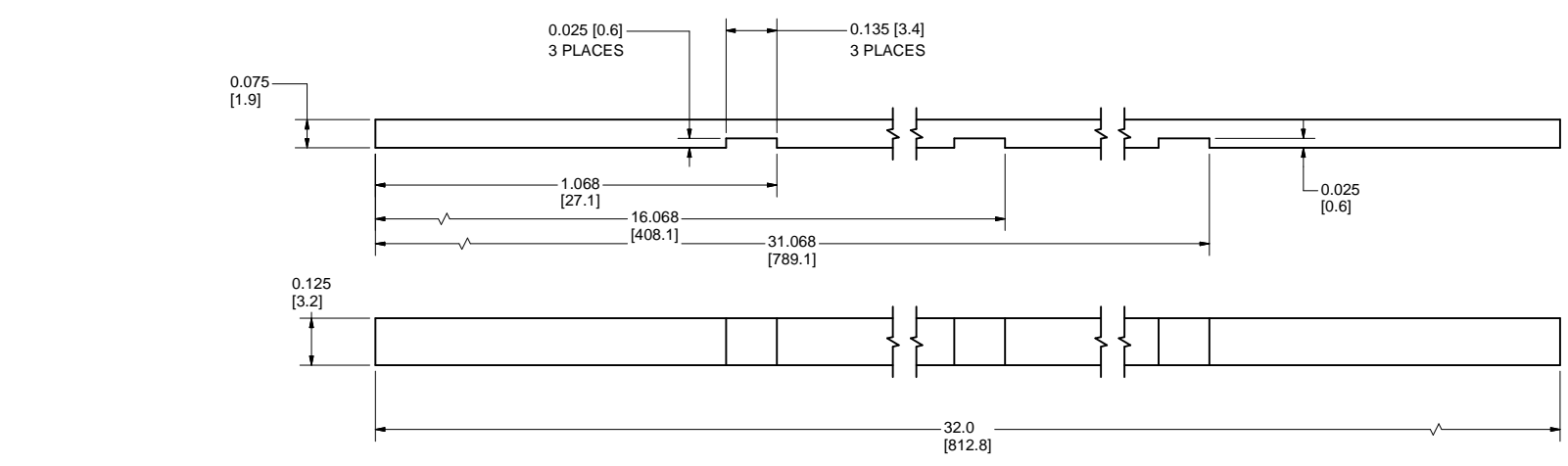
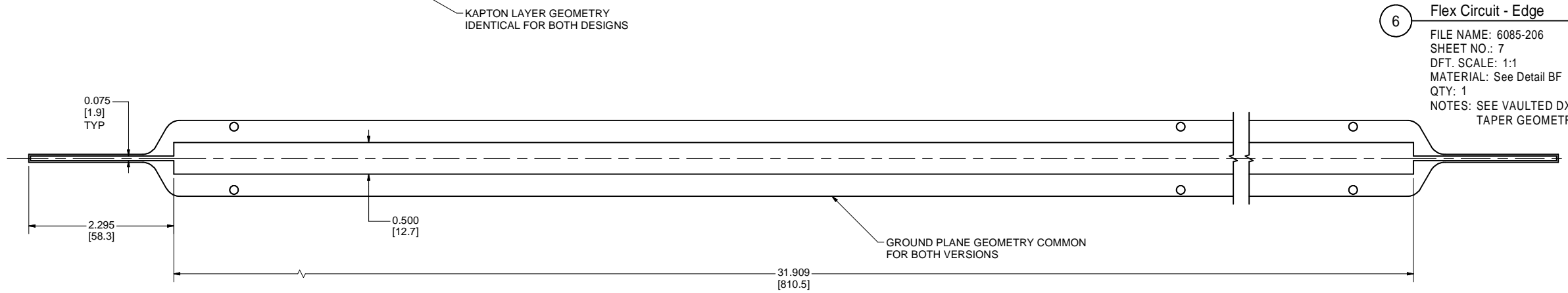
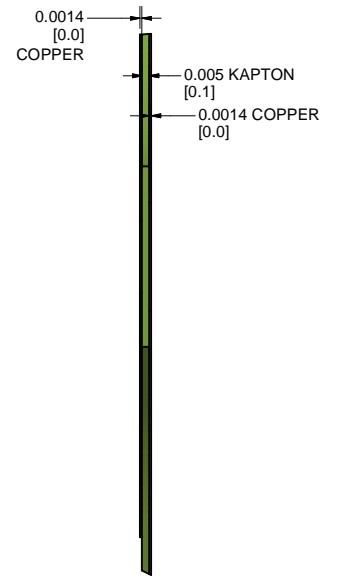
| REVISIONS | | | | |
|-----------|------|-------------|------|------|
| SYM. | ZONE | DESCRIPTION | DATE | APP. |
| | | | | |



5 Flex Circuit - Mid
 FILE NAME: 6085-206
 SHEET NO.: 7
 DFT. SCALE: 1:1
 MATERIAL: See Detail BF
 QTY: 2
 NOTES: SEE VAULTED DXF FILE FOR TAPER GEOMETRY



6 Flex Circuit - Edge
 FILE NAME: 6085-206
 SHEET NO.: 7
 DFT. SCALE: 1:1
 MATERIAL: See Detail BF
 QTY: 1
 NOTES: SEE VAULTED DXF FILE FOR TAPER GEOMETRY



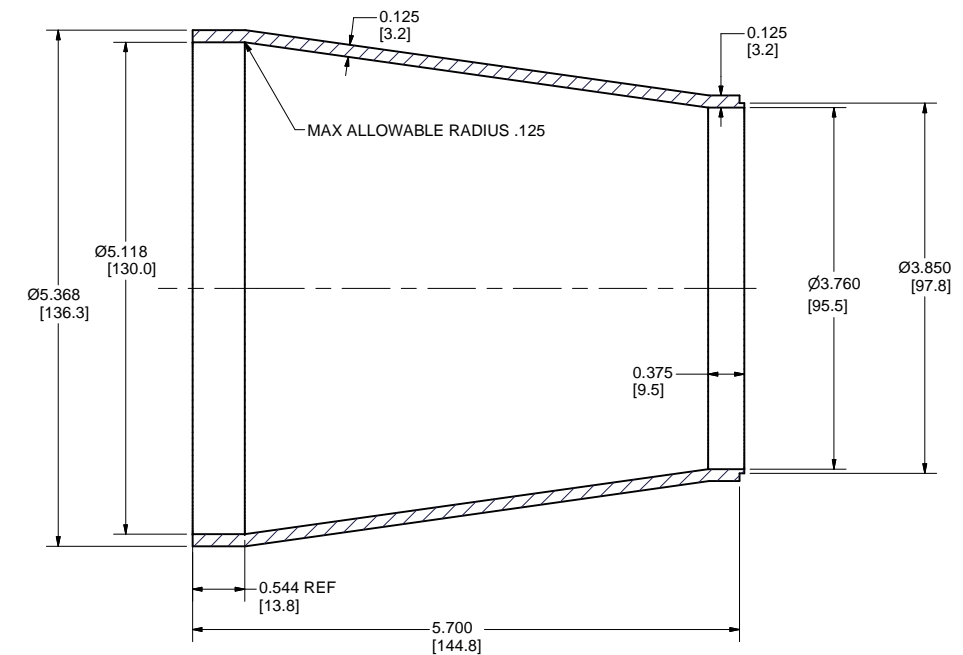
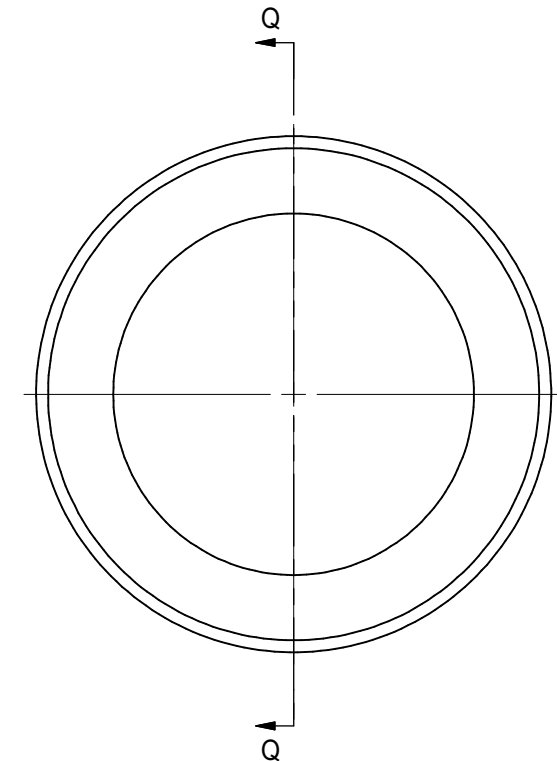
9 CIRCUIT CLAMP
 FILE NAME: 6085-206
 SHEET NO.: 7
 DFT. SCALE: 4:1
 MATERIAL: 316L
 QTY: 6
 NOTES:

FOR MACHINING LUBRICANT USE ONLY
 ALKALINE DETERGENT LUBRICANT CIMSTAR 40
 OR EQUIVALENT APPROVED BY CORNELL LEPP

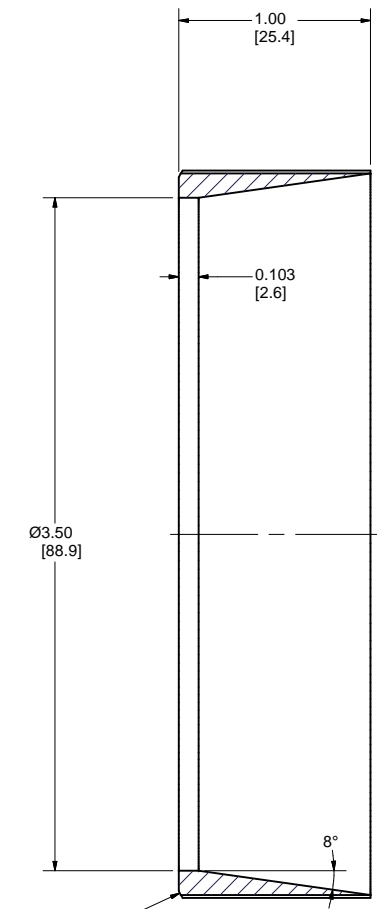
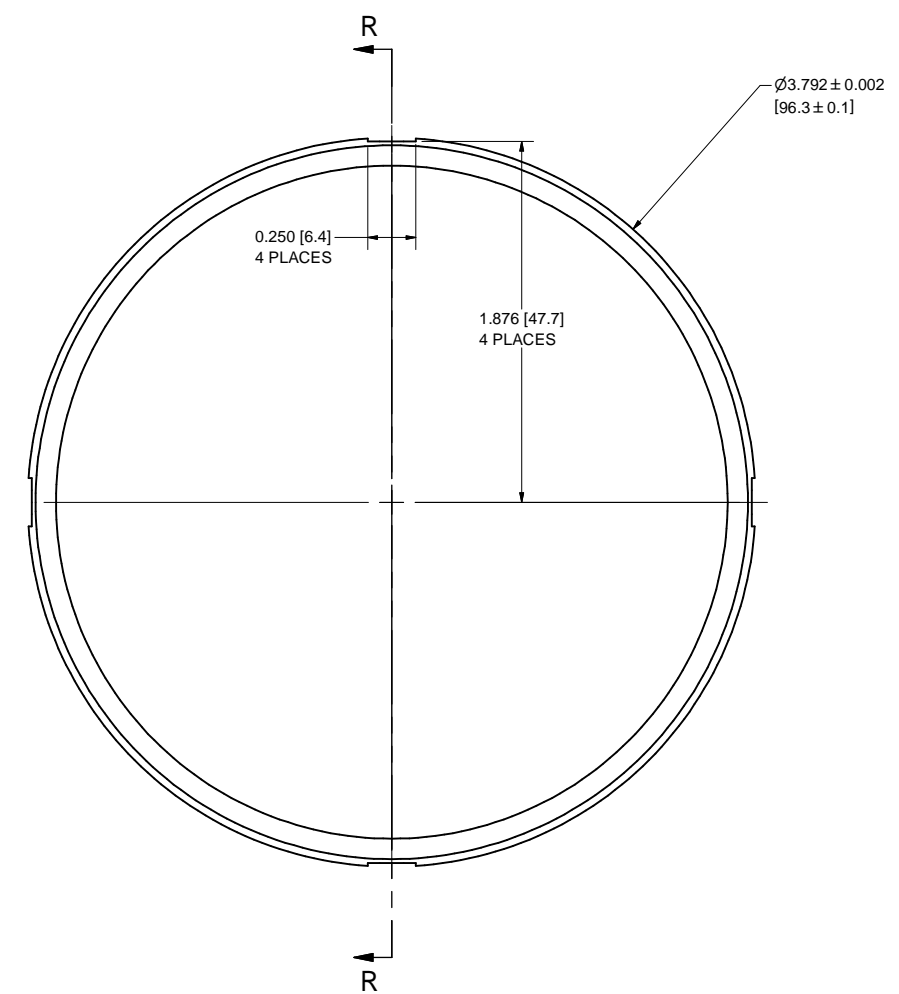
| ITEM | DWG. NO. | DESCRIPTION | QUANTITY | | | REMARKS | REV. |
|--|------------------------|---|-----------------|----------|-----------------|---------|------|
| | | | G1 | G2 | G3 | | |
| PRINT DISTR. | 6085-206 | CR-1 | | | | | |
| PLOT DATE: 1/10/2013 CAD FILE NAME: 6085-206.idw | | Cornell University Laboratory for Elementary-Particle Physics Floyd R. Newman Laboratory Robert R. Wilson Laboratory Ithaca, NY 14853 | | | | | |
| UNLESS OTHERWISE SPECIFIED: DIMENSIONS ARE IN INCHES: TOLERANCES ON: .0 ± .02 .00 ± .010 .000 ± .005 FRACTIONS ± 1/32 ANGLES ± 0.5° ALL SURFACES | | Quad 48W Time Resolved EC Detector Chamber: Collectors | | | | | |
| CHECKED BY: TIO | DRAWN BY: John Lanzoni | DRAWN FOR: MGB/YL | DATE: 11/7/2012 | SCALE: D | 6085-206 | REV. | |
| APPROVED BY: TIO | | | | | SH. NO. 7 OF 12 | | |

| REVISIONS | | | | |
|-----------|------|-------------|------|------|
| SYM. | ZONE | DESCRIPTION | DATE | APP. |
| | | | | |

14 REDUCER
 FILE NAME: 6085-206
 SHEET NO.: 10
 DFT. SCALE: 1:1
 MATERIAL: 316L
 QTY: 1
 NOTES:



SECTION Q-Q
 SCALE 1 : 1



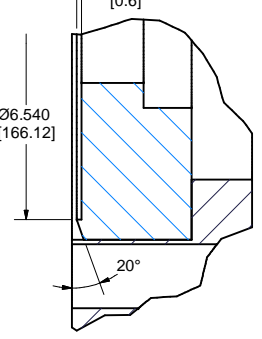
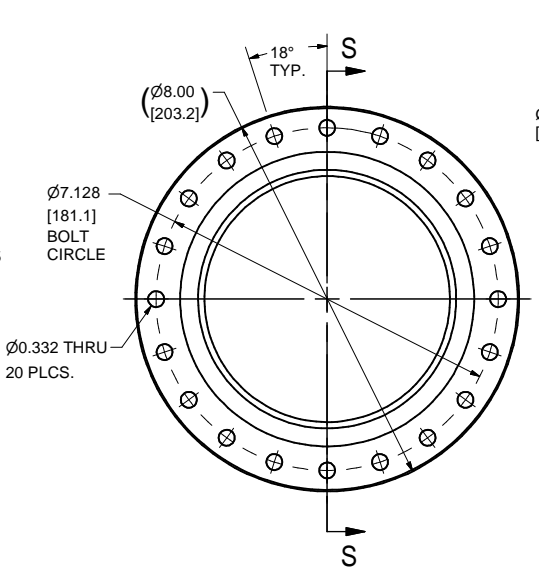
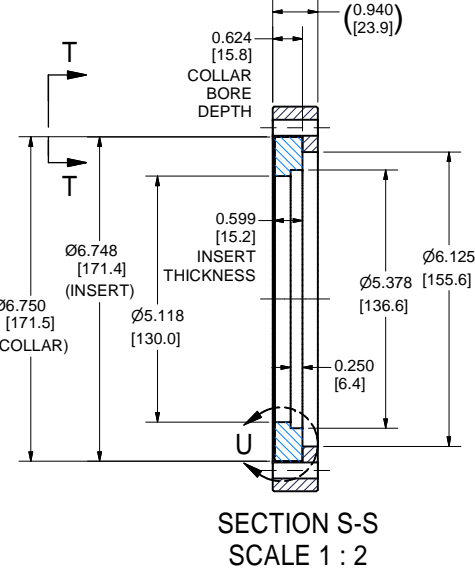
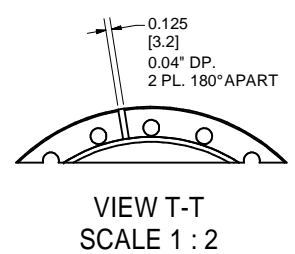
0.020 X 27° Chamfer

SECTION R-R
 SCALE 2 : 1

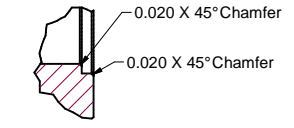
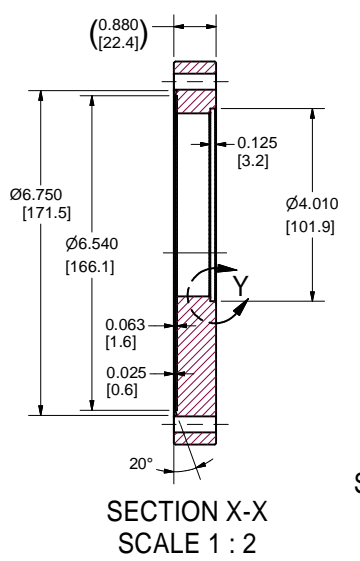
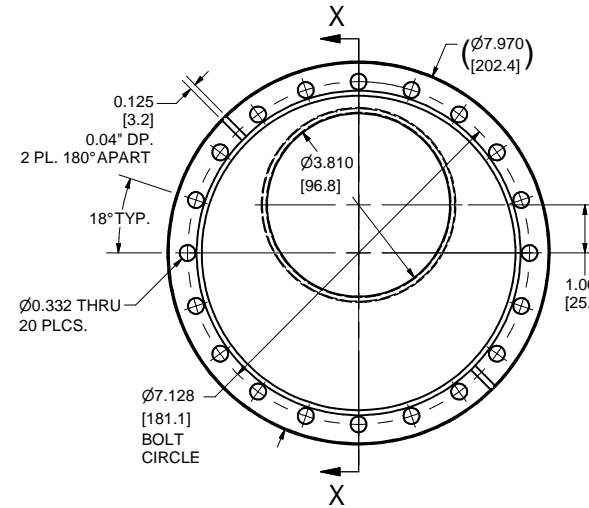
15 TAPERED CHAMBER INSERT
 FILE NAME: 6085-206
 SHEET NO.: 10
 DFT. SCALE: 2 : 1
 MATERIAL: 316L SST
 QTY: 1
 NOTES:

| ITEM | DWG. NO. | DESCRIPTION | G1 | G2 | G3 | REMARKS | REV. |
|---------------------------|--|--|-----------------|---|-------------------|-----------------|----------|
| | | | QUANTITY | | | | |
| PRINT DISTR. | PLOT DATE: 1/10/2013 CAD FILE NAME: 6085-206.idw | | | | | | |
| 6085-206 REV. 10 OF 12 | CR-1 | UNLESS OTHERWISE SPECIFIED: DIMENSIONS ARE IN INCHES: TOLERANCES ON: .0 ± .02 .00 ± .010 .000 ± .005 FRACTIONS ± 1/32 ANGLES ± 0.5° ALL SURFACES | | Cornell University Laboratory for Elementary-Particle Physics Floyd R. Newman Laboratory Robert R. Wilson Laboratory Ithaca, NY 14853 | | | |
| | Quad 48W Time Resolved EC Detector Chamber: Conical Reducer & Tapered Chamber Insert | | CHECKED BY: TIO | DRAWN BY: John Lanzoni | DRAWN FOR: MGB/YL | DATE: 11/7/2012 | SCALE: D |
| APPROVED BY: TIO | | | | | | | |

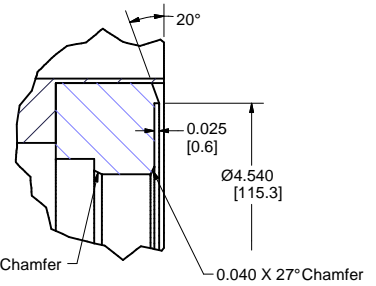
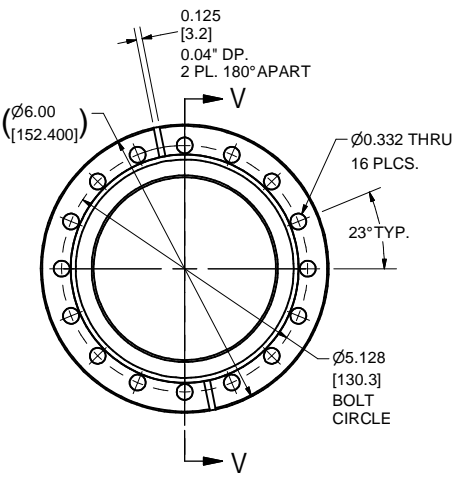
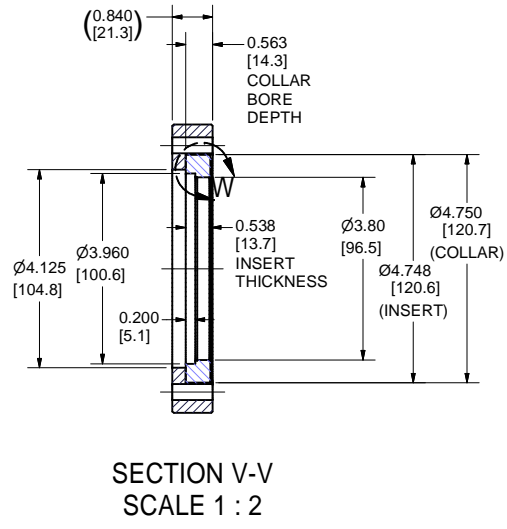
| REVISIONS | | | |
|-----------|------|-------------|-----------|
| SYM. | ZONE | DESCRIPTION | DATE APP. |
| | | | |



16 8" ROT. FLANGE
 FILE NAME: 6085-206
 SHEET NO.: 11
 DFT. SCALE: 1 : 2
 MATERIAL: 304 SST
 QTY: 1 PER ASSEMBLY
 NOTES:



18 OFFSET 8" NON-ROT. FLANGE
 FILE NAME: 6085-206
 SHEET NO.: 11
 DFT. SCALE: 1 : 2
 MATERIAL: 304 SST
 QTY: 1 PER ASSEMBLY
 NOTES:

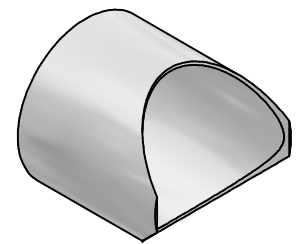


17 6" ROT. FLANGE
 FILE NAME: 6085-206
 SHEET NO.: 11
 DFT. SCALE: 1 : 2
 MATERIAL: 304 SST
 QTY: 1 PER ASSEMBLY
 NOTES:

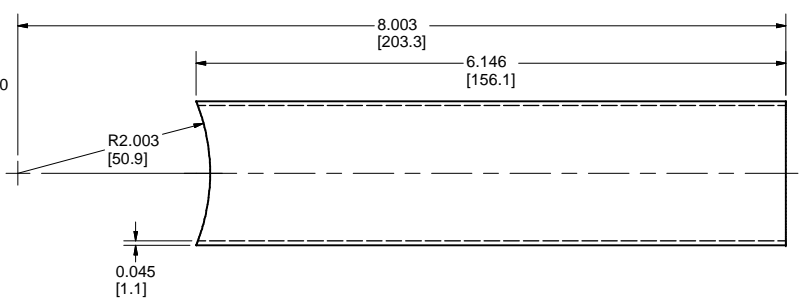
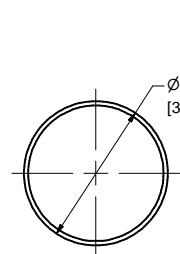
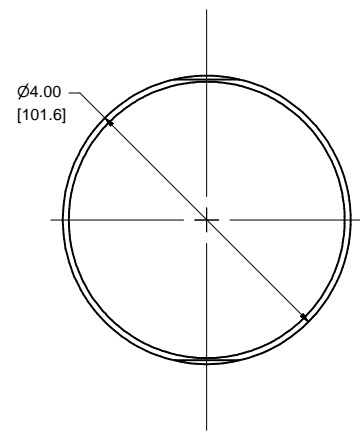
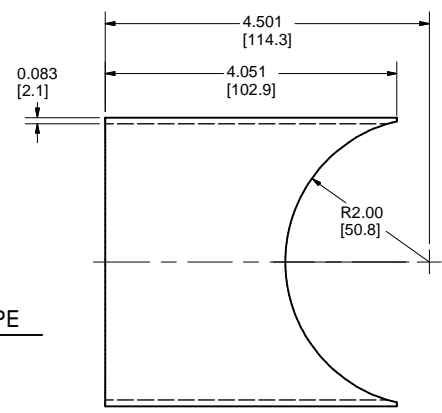
| ITEM | DWG. NO. | DESCRIPTION | G1 | G2 | G3 | REMARKS | REV. |
|------------------------------|---|---|-----------------|---|----------|---------|------------------|
| | | | QUANTITY | | | | |
| PRINT DISTR. | PLOT DATE: 1/10/2013 CAD FILE NAME: 6085-206.idw | | | | | | |
| 6085-206 SH. NO. 11 OF 12 | CR-1 | UNLESS OTHERWISE SPECIFIED: DIMENSIONS ARE IN INCHES: TOLERANCES ON: .0 ± .02 .00 ± .010 100 ± .005 FRACTIONS ± 1/32 ANGLES ± 0.5° ALL SURFACES ✓ | | Cornell University Laboratory for Elementary-Particle Physics Floyd R. Newman Laboratory Robert R. Wilson Laboratory Ithaca, NY 14853 | | | |
| | Quad 48W Time Resolved EC Detector Chamber: Flanges | | | | | | |
| CHECKED BY: TIO | DRAWN BY: John Lanzoni | DRAWN FOR: MGB/YL | DATE: 11/7/2012 | SCALE: D | 6085-206 | | REV. |
| APPROVED BY: TIO | | | | | | | SH. NO. 11 OF 12 |

FOR MACHINING LUBRICANT USE ONLY
 ALKALINE DETERGENT LUBRICANT CIMSTAR 40
 OR EQUIVALENT APPROVED BY CORNELL LEPP

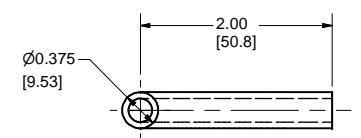
| REVISIONS | | | | |
|-----------|------|-------------|------|------|
| SYM. | ZONE | DESCRIPTION | DATE | APP. |
| | | | | |



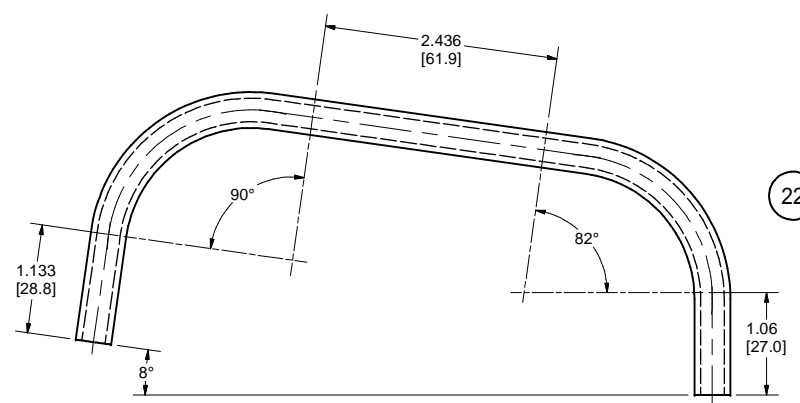
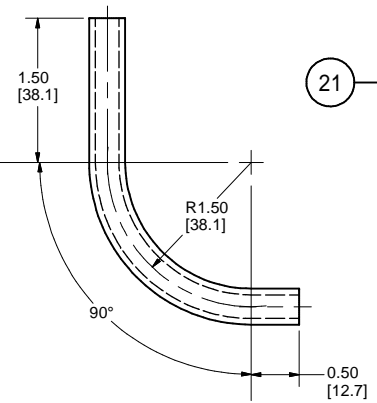
19 PUMP TEE BRANCH PIPE
 FILE NAME: 6085-206
 SHEET NO.: 12
 DFT. SCALE: 3 : 4
 MATERIAL: 304 SST
 QTY: 1 PER ASSEMBLY
 NOTES:



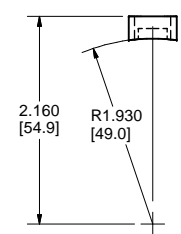
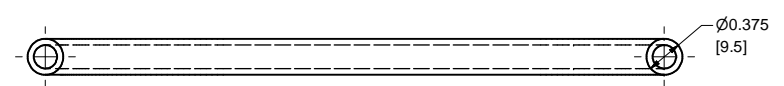
20 GAUGE TEE PIPE
 FILE NAME: 6085-206
 SHEET NO.: 12
 DFT. SCALE: 1 : 1
 MATERIAL: 304 SST
 QTY: 1 PER ASSEMBLY
 NOTES:



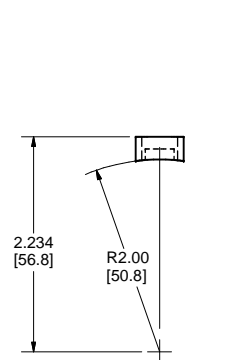
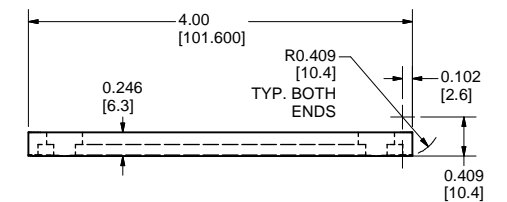
21 COOLING TUBE
 FILE NAME: 6085-206
 SHEET NO.: 12
 DFT. SCALE: 1 : 1
 MATERIAL: 304 SST TUBE; 3/8" O.D. x .065" WALL
 QTY: 4 PER ASSEMBLY
 NOTES:



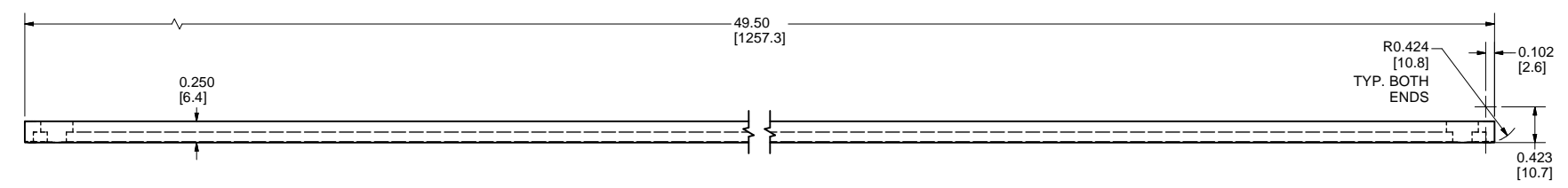
22 8 DEGREE JUMPER TUBE
 FILE NAME: 6085-206
 SHEET NO.: 12
 DFT. SCALE: 1 : 1
 MATERIAL: 304 SST TUBE; 3/8" O.D. x .065" WALL
 QTY: 2 PER ASSEMBLY
 NOTES:



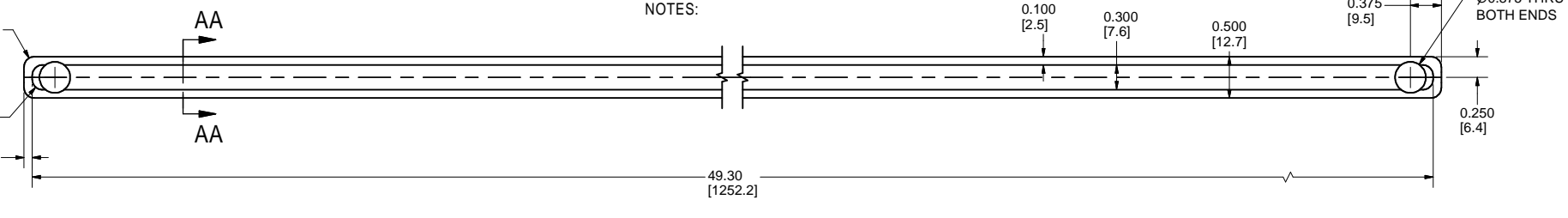
24 SHORT COOLING CHANNEL
 FILE NAME: 6085-206
 SHEET NO.: 12
 DFT. SCALE: 1 : 1
 MATERIAL: 304 SST
 QTY: 2 PER ASSEMBLY
 NOTES:



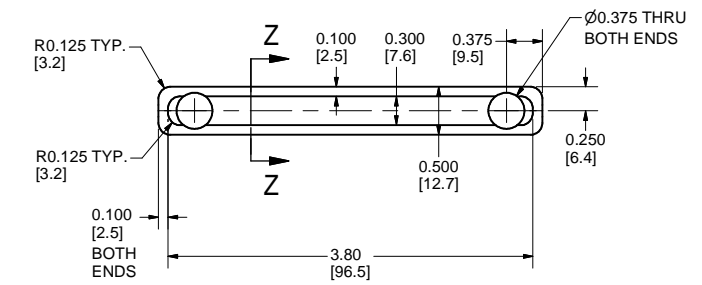
**SECTION AA-AA
 SCALE 1 : 1**



23 LONG COOLING CHANNEL
 FILE NAME: 6085-206
 SHEET NO.: 12
 DFT. SCALE: 1 : 1
 MATERIAL: 316L SST
 QTY: 2 PER ASSEMBLY
 NOTES:



**SECTION Z-Z
 SCALE 1 : 1**



| REV. | ITEM | DWG. NO. | DESCRIPTION | G1 | G2 | G3 | REMARKS | REV. |
|------|------|----------|-------------|----------|----|----|---------|------|
| | | | | QUANTITY | | | | |
| | | | | | | | | |
| | | | | | | | | |

| | | | |
|--------------|--|---|---|
| PRINT DISTR. | PLOT DATE: 1/10/2013 CAD FILE NAME: 6085-206.idw | Cornell University Laboratory for Elementary-Particle Physics Floyd R. Newman Laboratory Robert R. Wilson Laboratory Ithaca, NY 14853 | Quad 48W Time Resolved EC Detector Chamber: Pipes, Tubes, & Cooling Channel Details |
| CR-1 | UNLESS OTHERWISE SPECIFIED: DIMENSIONS ARE IN INCHES: TOLERANCES ON: .0 ± .02 .00 ± .010 .000 ± .005 FRACTIONS ± 1/32 ANGLES ± 0.5° ALL SURFACES | | |
| 6085-206 | | | |
| | CHECKED BY: TIO | DRAWN BY: John Lanzoni | |
| | APPROVED BY: TIO | DRAWN FOR: MGB/YL | |
| | | DATE: 11/7/2012 | |
| | | SCALE: D | |
| | | 6085-206 | |
| | | SH. NO. 12 OF 12 | |