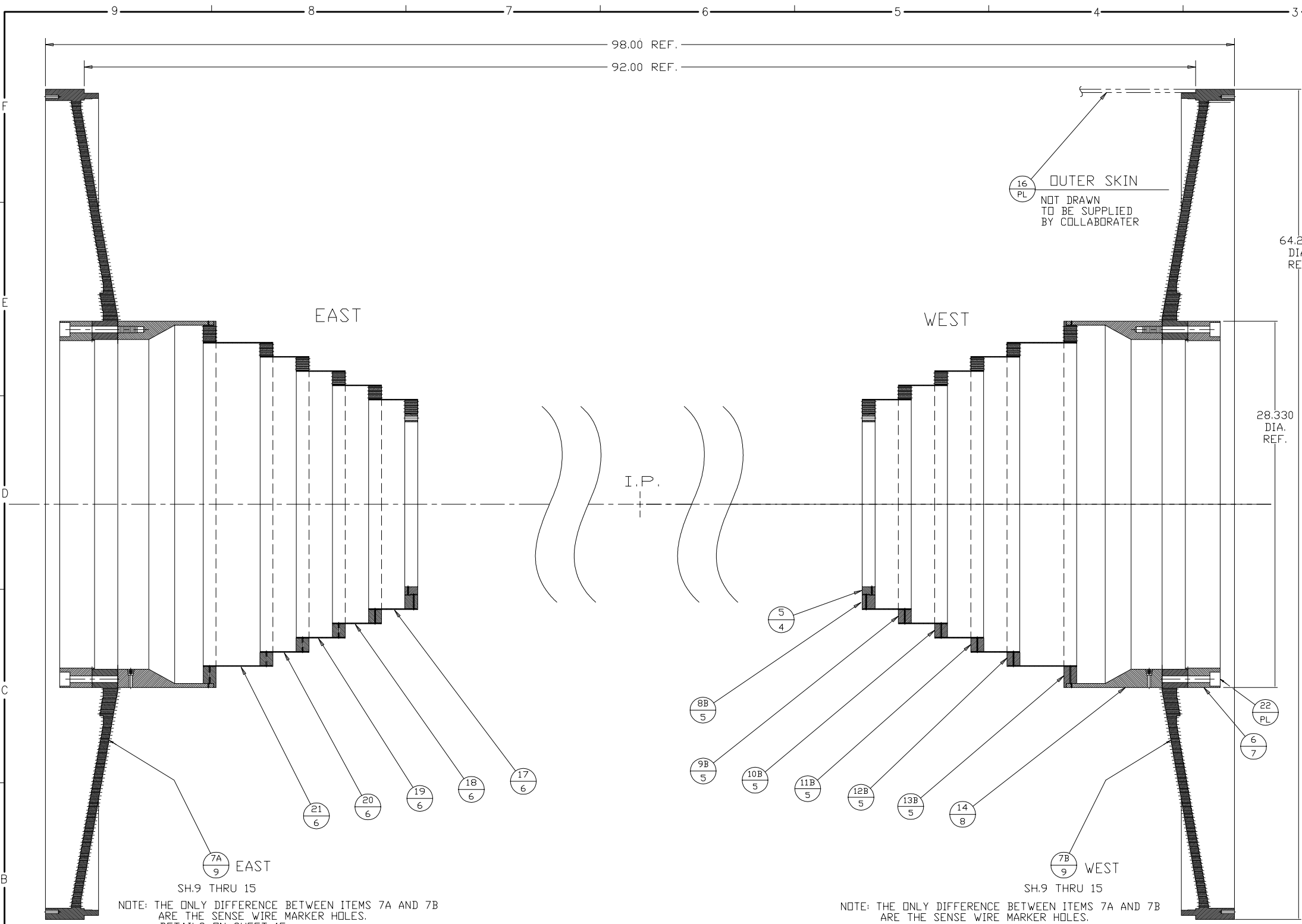


REVISIONS				
SYM.	ZONE	DESCRIPTION	DATE	APP.
A		MAJOR REVISIONS	TMK	11/1/95 DP
--		This drawing (paper & CAD file) was translated from A5K to ACAD for Web posting & archiving purposes only. There were NO revisions made. JSL		
			02/04/00	TOC



22	SH.1	SDC. HD. CAP SCR. 1/2-20UNF x 4.50 LG. STN.STL.	80		PURCHASE	
21	SH.6	BAND 5	2			
20	SH.6	BAND 4	2			
19	SH.6	BAND 3	2			
18	SH.6	BAND 2	2			
17	SH.6	BAND 1	2			
16	SH.1	OUTER SHELL	1		SUPPLIED BY COLLABORATER	
15	SH.1	TUBE SUPPORT RING	2		NO LONGER SHOWN IN THIS DRAWING SERIES	
14	SH.8	ENDPLATE JOINER BAND	2			
13B	SH.5	RING 6B	1			
12B	SH.5	RING 5B	1			
11B	SH.5	RING 4B	1			
10B	SH.5	RING 3B	1			
9B	SH.5	RING 2B	1			
8B	SH.5	RING 1B	1			
13A	SH.5	RING 6A	1			
12A	SH.5	RING 5A	1			
11A	SH.5	RING 4A	1			
10A	SH.5	RING 3A	1			
9A	SH.5	RING 2A	1			
8A	SH.5	RING 1A	1			
7B	SH.15	CONICAL ENDPLATE - WEST SENSE WIRE MARKER HOLES	1			
7A	SH.15	CONICAL ENDPLATE - EAST SENSE WIRE MARKER HOLES	1			
7	SH.14	CONICAL ENDPLATE-OUTSIDE Z PREAMP MOUNTING HOLES				
	SH.13	CONICAL ENDPLATE - CATHODE MOUNTING CONFIG.				
	SH.12	CONICAL ENDPLATE - INSIDE Z (45° SEGMENT)	2			
	SH.11	ENDPLATE SENSE + FIELD WIRE LOCATIONAL DIMENSION CHART			CHART	
	SH.10	CONICAL ENDPLATE - OUTSIDE Z (45° SEGMENT)				
	SH.9	CONICAL ENDPLATE - PROFILE DIMENSIONS				
6	SH.7	INNER SUPPORT RING	2			
5	SH.4	V.D. MOUNTING RING	2			
4	SH.1	BERYLLIUM TUBE	1		NO LONGER SHOWN IN THIS DRAWING SERIES	
3	SH.3	DRIFT CHAMBER, SIDE VIEW (ASSEMBLY)				
2	SH.2	DRIFT CHAMBER, END VIEW (ASSEMBLY)				
1	D-6057-005-01 SH. 1	CLED PHASE III DRIFT CHAMBER, ASSEMBLY	X			

NOTE: THE ONLY DIFFERENCE BETWEEN ITEMS 7A AND 7B ARE THE SENSE WIRE MARKER HOLES. DETAILS ON SHEET 15.

NOTE: THE ONLY DIFFERENCE BETWEEN ITEMS 7A AND 7B ARE THE SENSE WIRE MARKER HOLES. DETAILS ON SHEET 15.

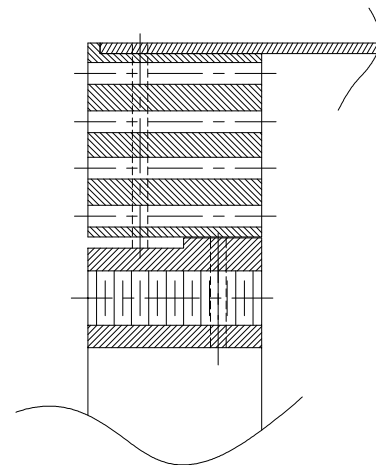
1
 CLED PHASE III, DRIFT CHAMBER CONICAL ENDPLATE - ASSEMBLY
 D-6057-005-01
 SCALE: 1:4
 QTY.: 1 REQ'D.

FOR MACHINING LUBRICANT USE ONLY ALKALINE DETERGENT LUBRICANT CIMSTAR 40 OR EQUIVALENT APPROVED BY CORNELL LNS.

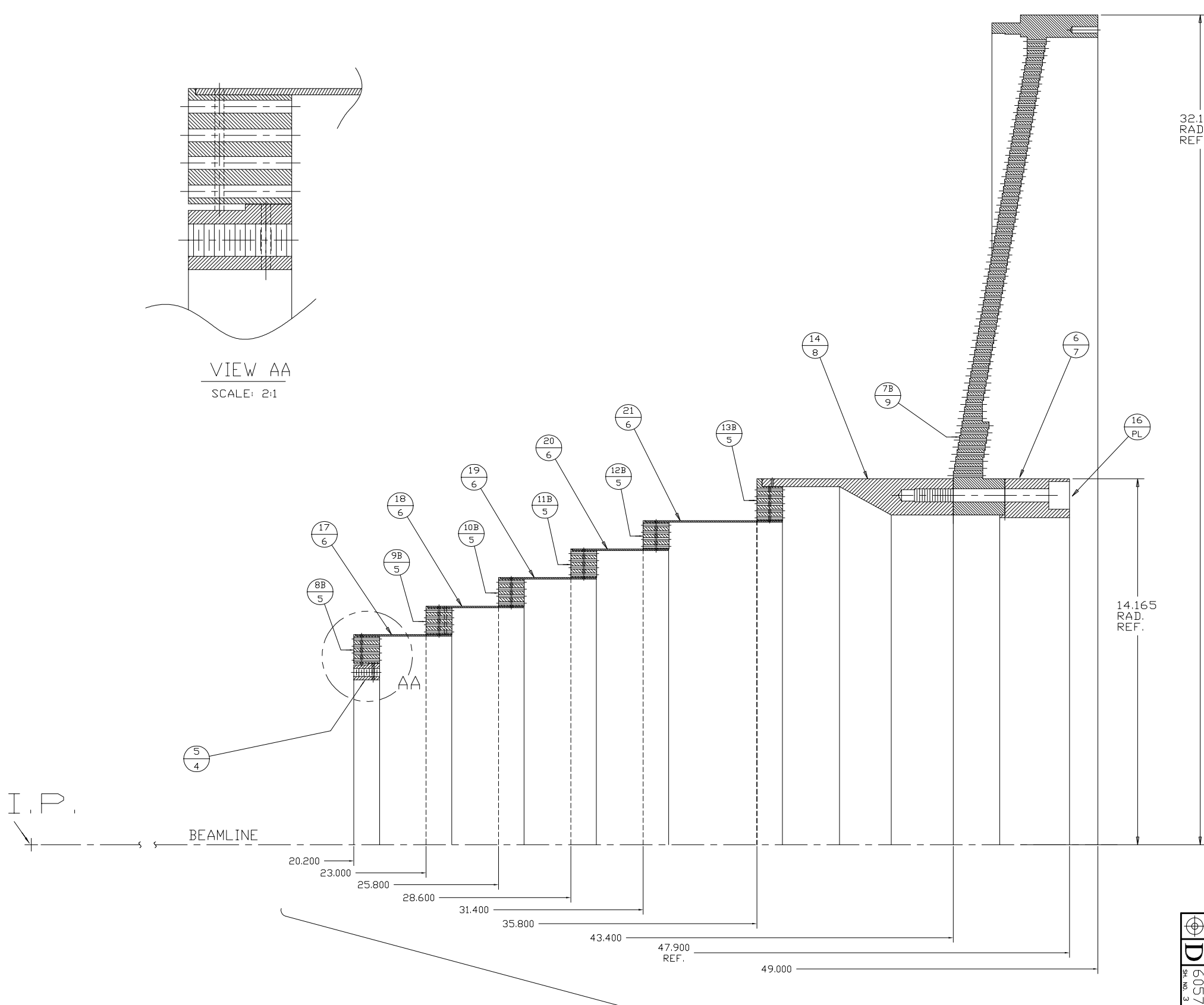
GENERAL NOTE:
 MACHINE ALL PARTS DESCRIBED IN DRAWING D-6057-005 (SH.1-15) USING DIMENSIONS PRINTED ON PARTS OR IN ASSOCIATED CHARTS. CAD FILE GEOMETRY MAY NOT AGREE WITH DIMENSIONS SHOWN.

ITEM	DWG. NO.	DESCRIPTION	QUANTITY			REMARKS	REV.
			G1	G2	G3		
PLOT DATE 02/04/00 CAD FILE NAME D-6057-005-01							
UNLESS OTHERWISE SPECIFIED DIMENSIONS ARE IN INCHES TOLERANCES ON: .00 ± .010 .000 ± .005 FRACTIONS ± 1/64 ANGLES ± 0.5° ALL SURFACES 125			Cornell University Floyd R. Newman Laboratory of Nuclear Studies - Ithaca, NY 14853-5001				
CLED PHASE III, DRIFT CHAMBER CONICAL ENDPLATE - ASSEMBLY							
CHECKED BY PETERSON	DRAWN BY TMK	DRAWN FOR PETERSON	DATE 12/15/94	SCALE 1:4	D 6057-005 SH. NO. 1 CONT. ON 2		
APPROVED BY PETERSON					REV. A		

REVISIONS				
SYM.	ZONE	DESCRIPTION	DATE	APP.
A		MAJOR REVISIONS	11/1/95	DP
--		This drawing (paper & CAD file) was translated from ASK to ACAD for Web posting & archiving purposes only. There were NO revisions made.	02/03/00	TOC



VIEW AA
SCALE: 2:1



3 DRIFT CHAMBER, QUARTER SECTION
D-6057-005-03
SCALE: 1:2

GENERAL NOTE:
MACHINE ALL PARTS DESCRIBED IN
DRAWING D-6057-005 (SH.1-15)
USING DIMENSIONS PRINTED ON PARTS
OR IN ASSOCIATED CHARTS.
CAD FILE GEOMETRY MAY NOT AGREE
WITH DIMENSIONS SHOWN.

I.P.

BEAMLINE

- 20.200
- 23.000
- 25.800
- 28.600
- 31.400
- 35.800
- 43.400
- 47.900 REF.
- 49.000

NOTE: BRACKETED DIMENSIONS TAKEN FROM THE I.P.

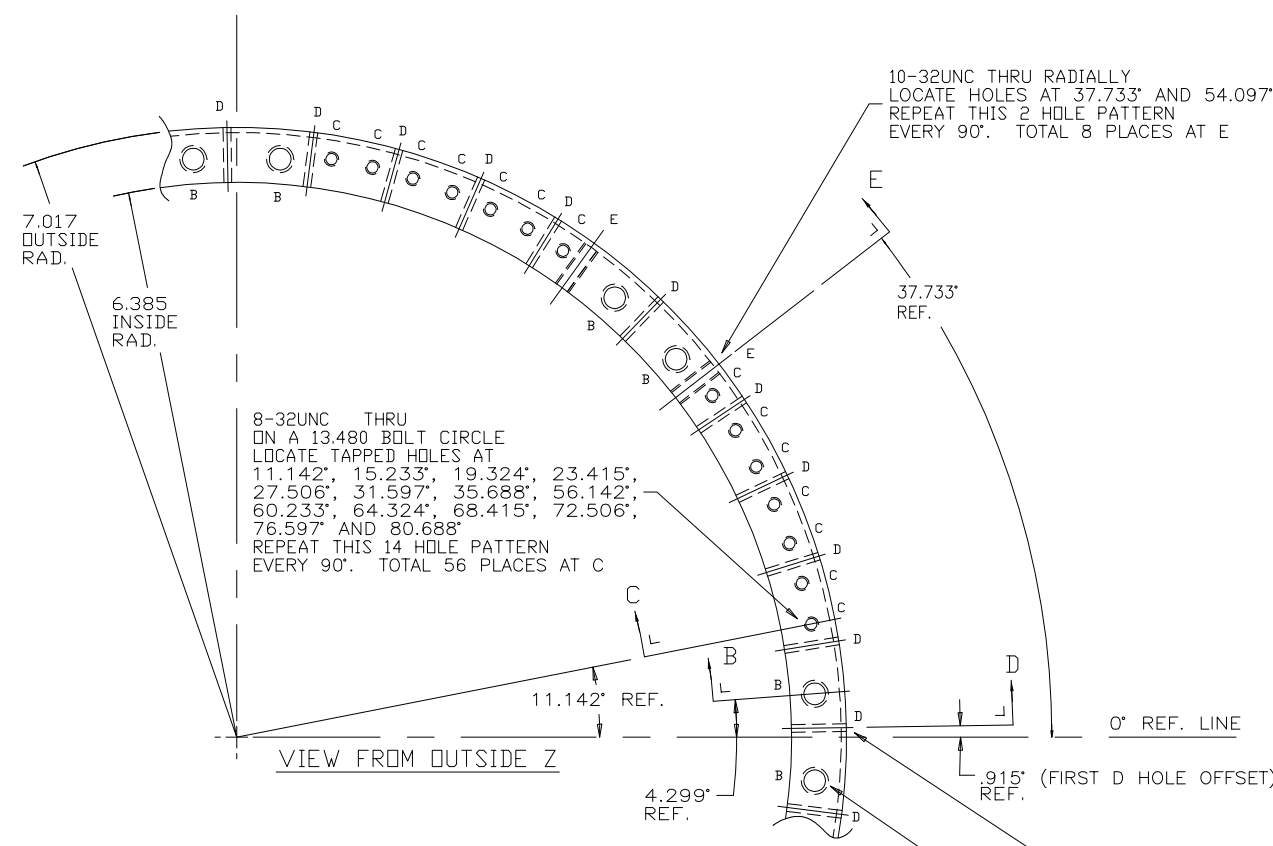
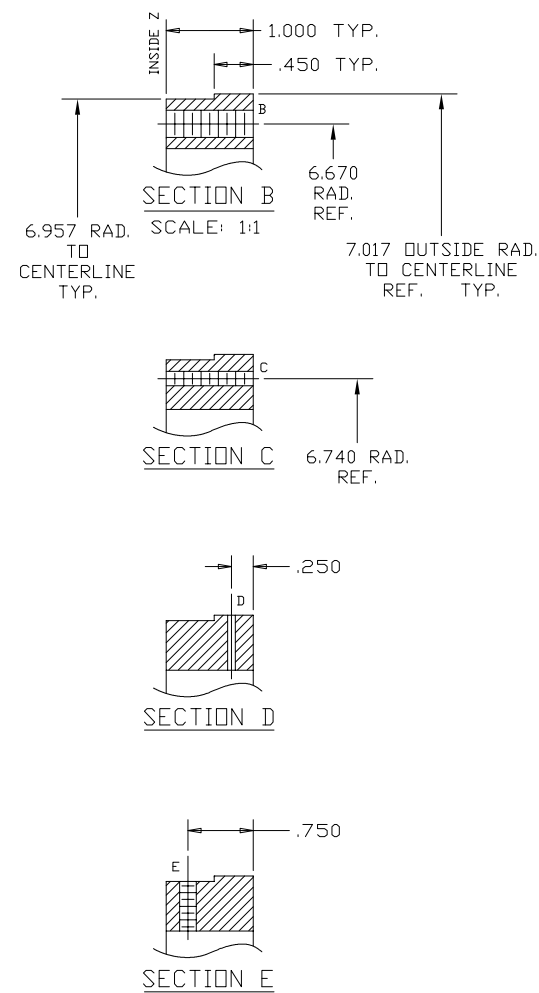
FOR MACHINING LUBRICANT USE ONLY
ALKALINE DETERGENT LUBRICANT CIMSTAR 40
OR EQUIVALENT APPROVED BY CORNELL LNS.

REV.	ITEM	DWG. NO.	DESCRIPTION	G1	G2	G3	REMARKS	REV.
				QUANTITY				
1	PRINT		PLOT DATE 02/03/00					
1	DISTR.		CAD FILE NAME D-6057-005-03					
2			UNLESS OTHERWISE SPECIFIED					
3			DIMENSIONS ARE IN INCHES					
4			TOLERANCES ON:					
			.00 ±.010					
			.000 ±.005					
			FRACTIONS ±1/64					
			ANGLES ±0.5°					
			ALL SURFACES 125					
			CHECKED BY PETERSON					
			APPROVED BY PETERSON					
			DRAWN BY TMK					
			DRAWN FOR PETERSON					
			DATE 12/15/94					
			SCALE .50					
			D 6057-005					
			SH. NO. 3 CONT. ON 4					

Cornell University
Floyd R. Newman Laboratory of Nuclear Studies - Ithaca, NY 14853-5001

CLEO PHASE III, DRIFT CHAMBER
CONICAL ENDPLATE - QUARTER SECTION

REVISIONS				
SYM.	ZONE	DESCRIPTION	DATE	APP.
A		MAJOR REVISIONS	TMK	10/31/95 DP
		This drawing (paper & CAD file) was translated from ASK to ACAD for Web posting & archiving purposes only. There were NO revisions made. JGL		
			02/02/00	TOC



.089 (#43) DIA. THRU RADIALLY OFFSET FROM 0" REF. LINE AT .915", 9.097", 17.279", 25.460", 33.642", 45.915", 58.188", 66.370", 74.551" AND 82.733" TOL. = IN Z +/- .003
NON-ACCUMULATIVE
TANGENTIAL +/- .003
NON-ACCUMULATIVE
REPEAT THIS 10 HOLE PATTERN EVERY 90°
TOTAL 40 HOLES AT D

5/16-18UNC THRU ON A 13.340 BOLT CIRCLE LOCATE TAPPED HOLES AT 4.299", 40.701", 49.299" AND 85.701" REPEAT THIS 4 HOLE PATTERN EVERY 90°. TOTAL 16 PLACES AT B

5 VD MOUNTING RING
D-6057-005-04
SCALE: 1:1
MAT'L: 6061-T6 ALUM.
QTY: 2 REQ'D.
NOTES: 1. ALL RADII CONTINUE A FULL 360° GIVING PART A 14.034 OUTSIDE DIA.

GENERAL NOTE:
MACHINE ALL PARTS DESCRIBED IN DRAWING D-6057-005 (SH.1-15) USING DIMENSIONS PRINTED ON PARTS OR IN ASSOCIATED CHARTS. CAD FILE GEOMETRY MAY NOT AGREE WITH DIMENSIONS SHOWN.

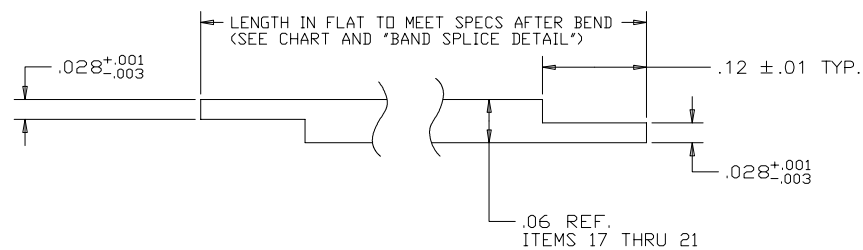
FOR MACHINING LUBRICANT USE ONLY
ALKALINE DETERGENT LUBRICANT CIMSTAR 40
OR EQUIVALENT APPROVED BY CORNELL LNS.

REV.	ITEM	DWG. NO.	DESCRIPTION	G1	G2	G3	REMARKS	REV.
				QUANTITY				
D	PRINT		PLOT DATE 02/02/00					
	DISTR.		CAD FILE NAME D-6057-005-04					
6057-005			UNLESS OTHERWISE SPECIFIED					
4			DIMENSIONS ARE IN INCHES					
5			TOLERANCES ON:					
			.00 ± .010					
			.000 ± .005					
			FRACTIONS ± 1/64					
			ANGLES ± 0.5°					
			ALL SURFACES 125					
	CHECKED BY	PETERSON	DRAWN BY	TMK	DRAWN FOR	PETERSON	DATE	12/15/94
	APPROVED BY	PETERSON	SCALE	1:1	D	6057-005	REV.	A
			SH. NO. 4	CONT. ON 5				

Cornell University
Floyd R. Newman Laboratory of Nuclear Studies - Ithaca, NY 14853-5001

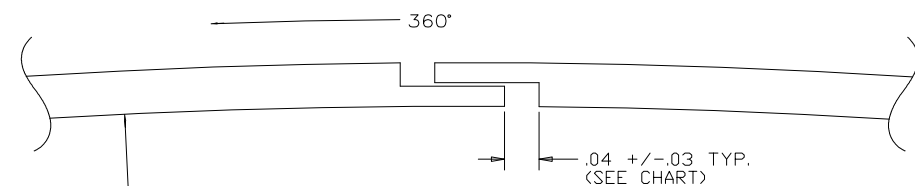
CLEO PHASE III, DRIFT CHAMBER
CONICAL ENDPLATE - VD MOUNTING RING

REVISIONS				
SYM.	ZONE	DESCRIPTION	DATE	APP.
A		MAJOR REVISIONS	TMK	10/31/95 DP
--		This drawing (paper & CAD file) was translated from ASK to ACAD for Web posting & archiving purposes only. There were NO revisions made. JGL		
			02/02/00	TOC



- ①7 BAND 1
 - ①8 BAND 2
 - ①9 BAND 3
 - ②0 BAND 4
 - ②1 BAND 5
- D-6057-005-06
 SCALE: 20:1
 MAT'L: 316 OR 316L STN. STL. (NON-MAG.)
 x .060 THK.
 QTY: 2 REQ'D. EACH ITEM
 NOTE: SEE CHART (THIS SHEET)
 AND 'BAND SPLICE DETAIL'

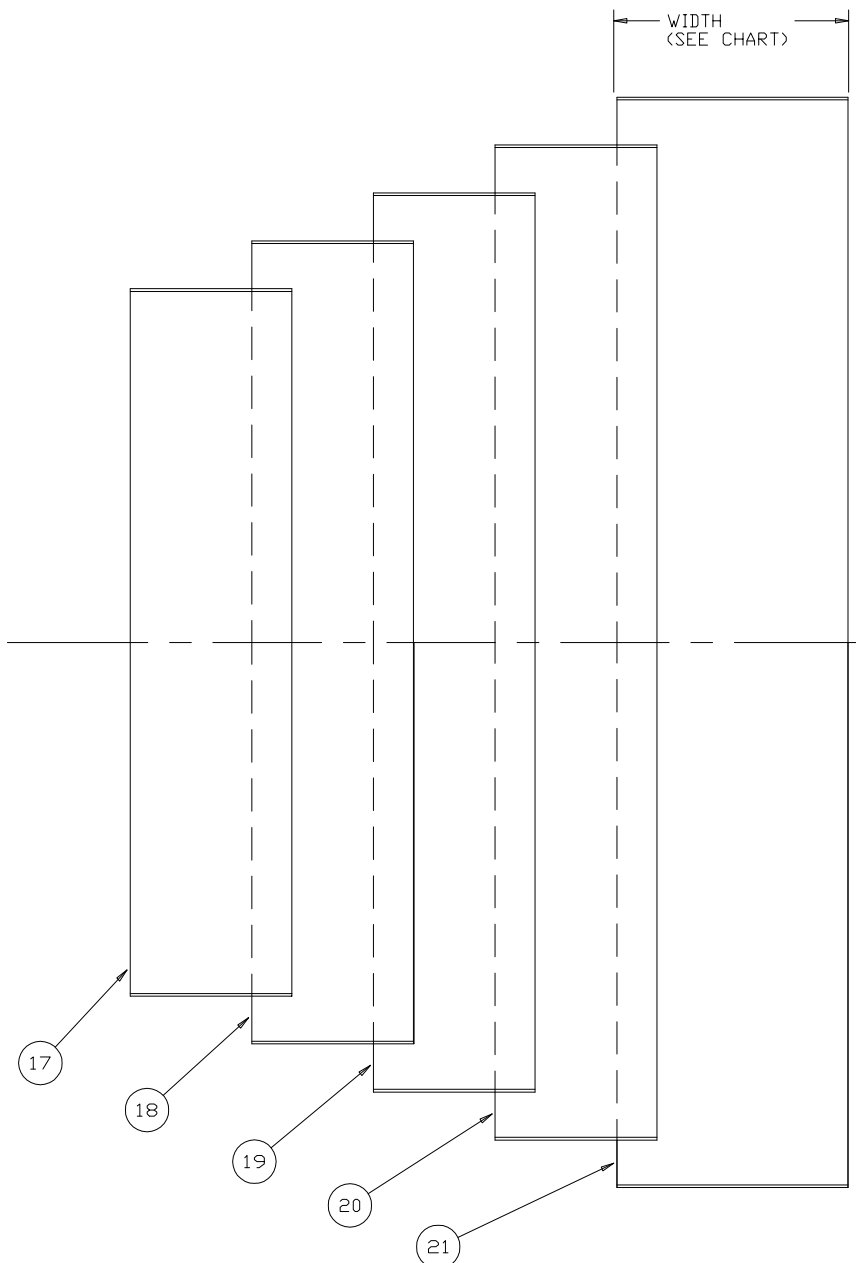
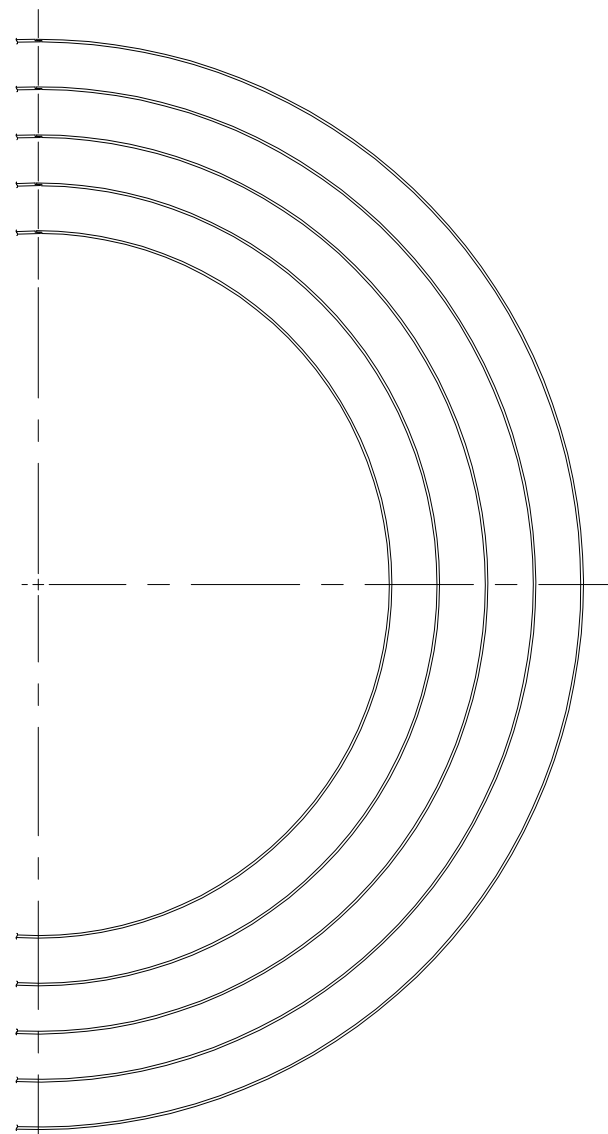
	BAND 1 ITEM 17	BAND 2 ITEM 18	BAND 3 ITEM 19	BAND 4 ITEM 20	BAND 5 ITEM 21
INSIDE RADIUS	8.077	9.175	10.284	11.389	12.484
WIDTH	3.72	3.72	3.72	3.720	5.320



BAND SPLICE DETAIL

SCALE: 20:1

NOTE: 1."AFTER BEND" SPECS SHOWN ABOVE AND IN CHART.
 "AFTER BEND" BANDS ARE FULL 360"

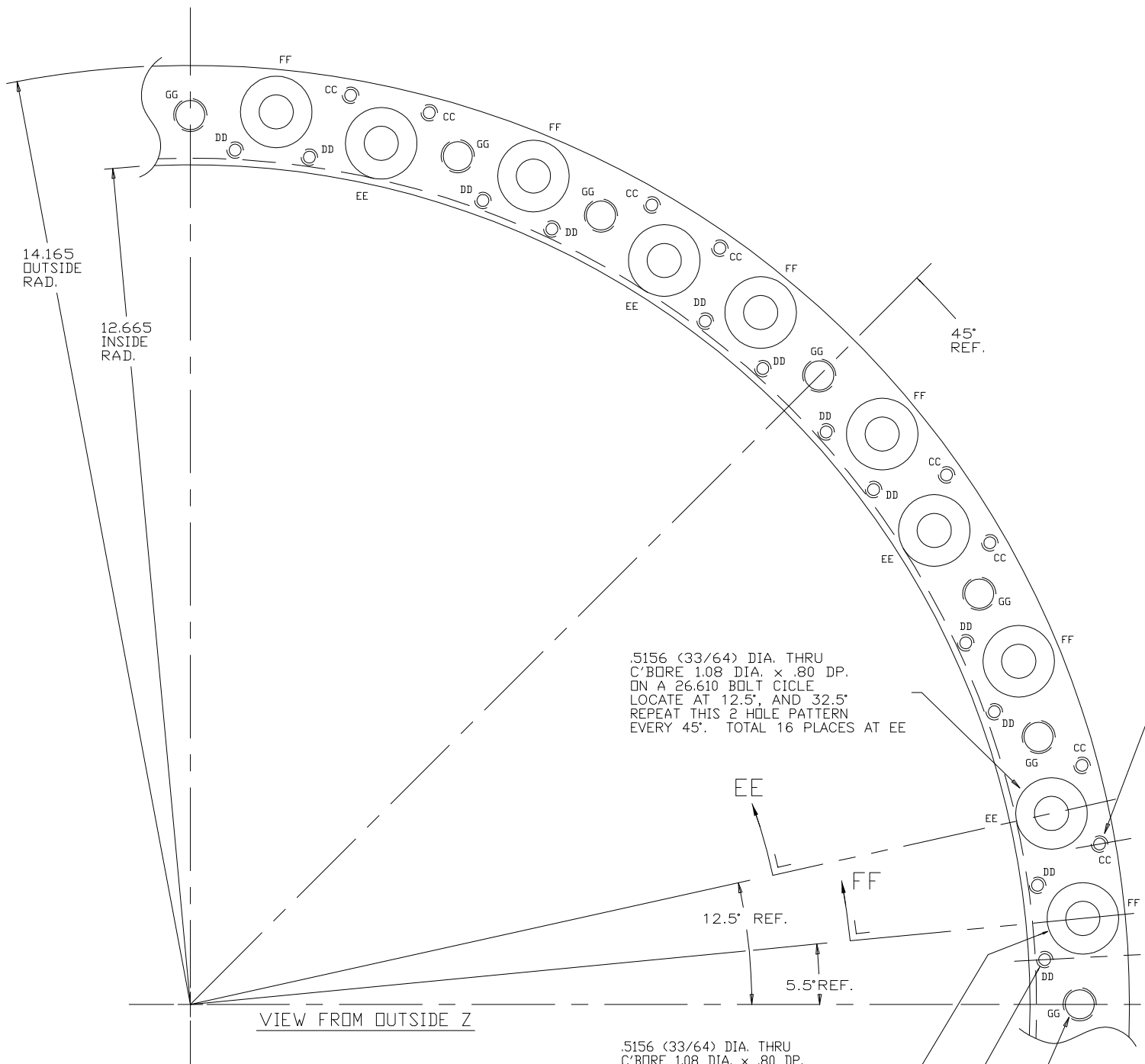
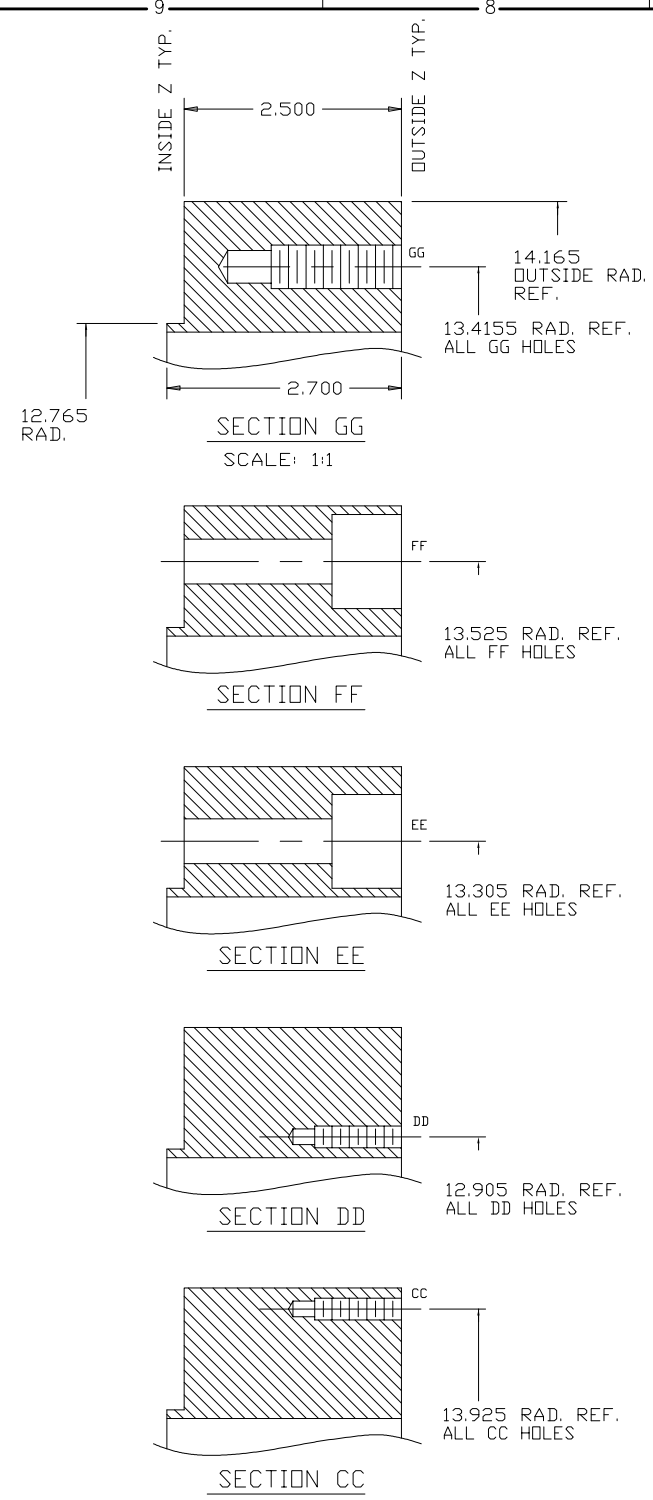


FOR MACHINING LUBRICANT USE ONLY
 ALKALINE DETERGENT LUBRICANT CIMSTAR 40
 OR EQUIVALENT APPROVED BY CORNELL LNS.

GENERAL NOTE:
 MACHINE ALL PARTS DESCRIBED IN
 DRAWING D-6057-005 (SH.1-15)
 USING DIMENSIONS PRINTED ON PARTS
 OR IN ASSOCIATED CHARTS.
 CAD FILE GEOMETRY MAY NOT AGREE
 WITH DIMENSIONS SHOWN.

REV.	ITEM	DWG. NO.	DESCRIPTION	G1	G2	G3	REMARKS	REV.
				QUANTITY				
D	PRINT		PLOT DATE 02/02/00					
	DISTR.		CAD FILE NAME D-6057-005-06					
6057-005	UNLESS OTHERWISE SPECIFIED			Cornell University				
SH. NO. 6 CONT. ON 7	DIMENSIONS ARE IN INCHES			Floyd R. Newman Laboratory of Nuclear Studies - Ithaca, NY 14853-5001				
	CR-1		TOLERANCES ON:	CLED PHASE III, DRIFT CHAMBER				
	CB-1		.00 ± .010	CONICAL ENDPLATE - JOINER BANDS				
	JC-1		.000 ± .005					
			FRACTIONS ± 1/64					
			ANGLES ± 0.5°					
			ALL SURFACES 125					
A	CHECKED BY PETERSON	DRAWN BY	DATE	SCALE	D 6057-005			REV.
	APPROVED BY PETERSON	TMK	PETERSON 12/15/94	AS NOTED	SH. NO. 6 CONT. ON 7			A

REVISIONS				
SYM.	ZONE	DESCRIPTION	DATE	APP.
A		MAJOR REVISIONS	TMK	10/31/95
		This drawing (paper & CAD file) was translated from ASK to ACAD for Web posting & archiving purposes only. There were NO revisions made.		
			02/02/00	TOC
				JGL



6 INNER SUPPORT RING
D-6057-005-07
SCALE: 1:1
MAT'L: 316 OR 316L STN.STL. (NON-MAG.)
QTY.: 2 REQ'D.
NOTES: 1. ALL RADII CONTINUE A FULL 360° GIVING PART A 28.330 OUTSIDE DIA.

.5156 (33/64) DIA. THRU C'BORE 1.08 DIA. x .80 DP. ON A 26.610 BOLT CIRCLE LOCATE AT 12.5° AND 32.5° REPEAT THIS 2 HOLE PATTERN EVERY 45°. TOTAL 16 PLACES AT EE

1/4-20UNC x 1.00 DP. LEAD DRILL x 1.25 DP. ON A 27.850 BOLT CIRCLE LOCATE AT 10.0°, 15.0°, 30.0°, AND 35.0° REPEAT THIS 4 HOLE PATTERN EVERY 45°. TOTAL 32 PLACES AT CC

.5156 (33/64) DIA. THRU C'BORE 1.08 DIA. x .80 DP. ON A 27.050 BOLT CIRCLE LOCATE AT 5.5°, 22.5°, AND 39.5° REPEAT THIS 3 HOLE PATTERN EVERY 45°. TOTAL 24 PLACES AT FF

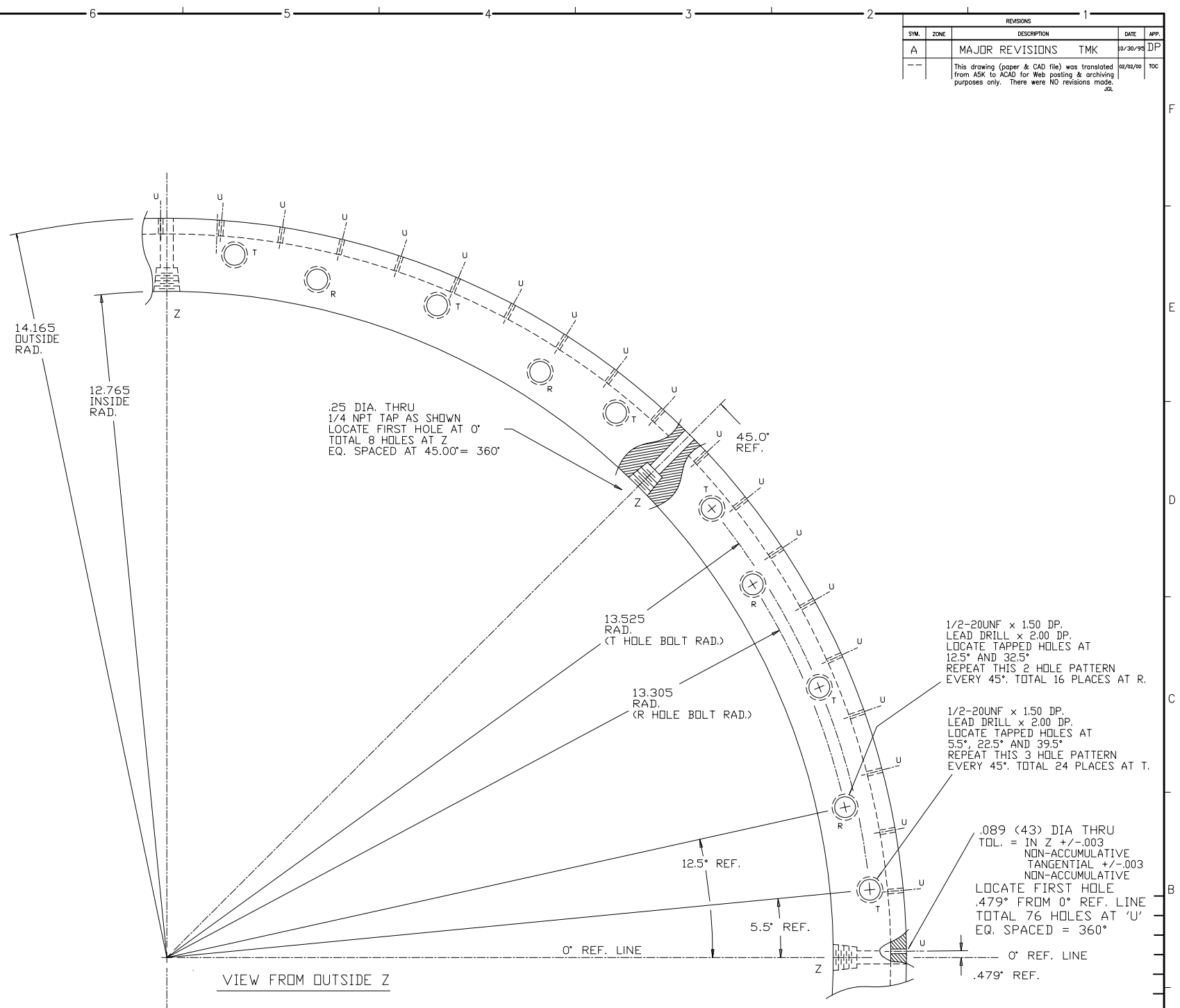
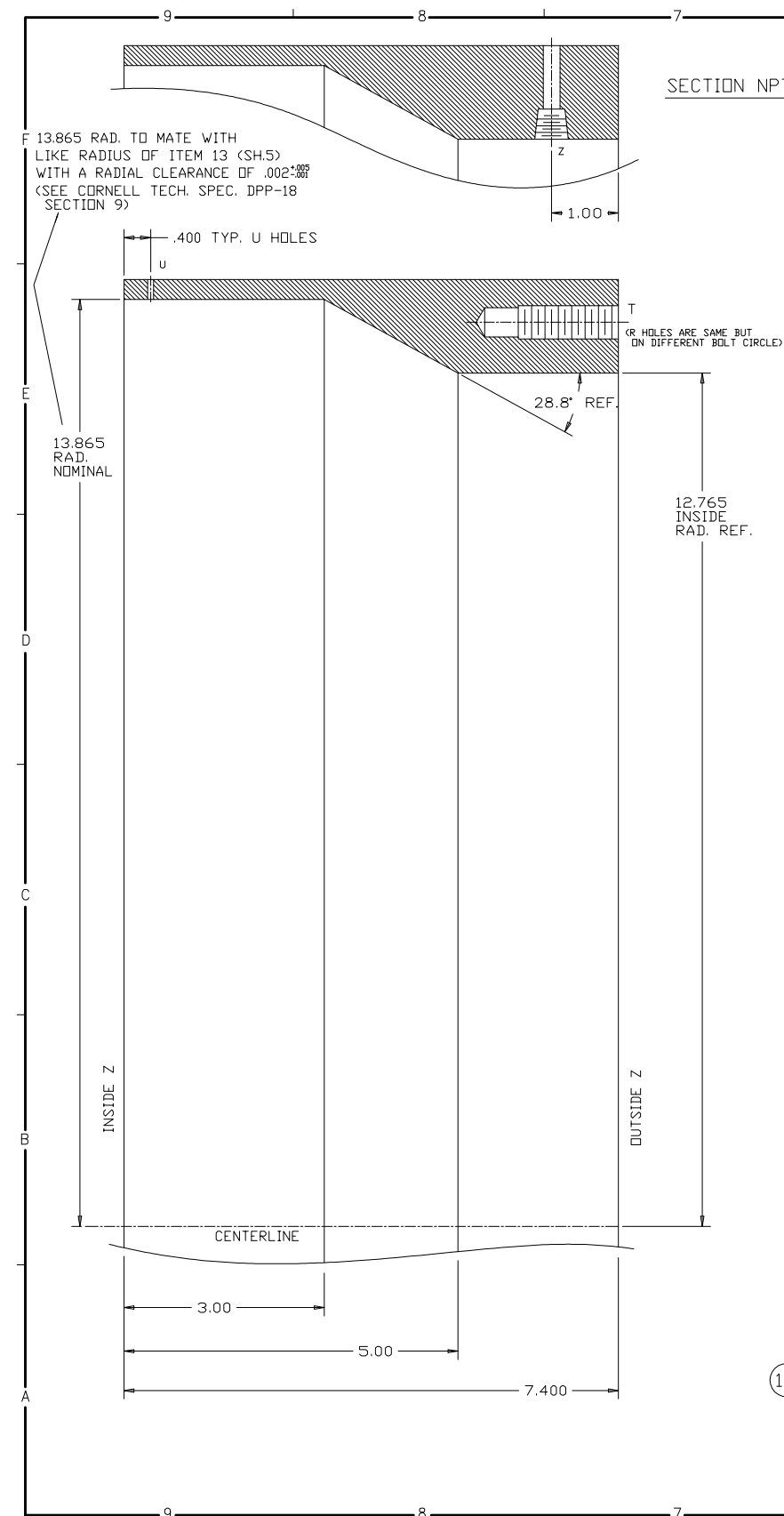
1/4-20UNC x 1.00 DP. LEAD DRILL x 1.25 DP. ON A 25.810 BOLT CIRCLE LOCATE AT 3.0°, 8.0°, 20.0°, 25.0°, 37.0°, AND 42.0° REPEAT THIS 6 HOLE PATTERN EVERY 45°. TOTAL 48 PLACES AT DD

1/2-20UNF x 1.50 DP. LEAD DRILL x 2.00 DP. ON A 26.831 BOLT CIRCLE LOCATE TAPPED HOLE AT 0°, 17.5° AND 27.5° REPEAT EVERY 45° TOTAL 24 PLACES AT GG

FOR MACHINING LUBRICANT USE ONLY
ALKALINE DETERGENT LUBRICANT CIMSTAR 40
OR EQUIVALENT APPROVED BY CORNELL LNS.

GENERAL NOTE:
MACHINE ALL PARTS DESCRIBED IN DRAWING D-6057-005 (SH.1-15) USING DIMENSIONS PRINTED ON PARTS OR IN ASSOCIATED CHARTS. CAD FILE GEOMETRY MAY NOT AGREE WITH DIMENSIONS SHOWN.

REV.	NO.	DATE	BY	CHKD.	APP'D.	ITEM	DWG. NO.	DESCRIPTION	QUANTITY			REMARKS	REV.
									G1	G2	G3		
						PRINT		PLOT DATE 02/02/00					
						DISTR.		CAD FILE NAME D-6057-005-07					
								UNLESS OTHERWISE SPECIFIED					
								DIMENSIONS ARE IN INCHES					
								TOLERANCES ON:					
								.50 ±.010					
								.000 ±.005					
								FRACTIONS ±1/64					
								ANGLES ±0.5°					
								ALL SURFACES 125					
								CHECKED BY PETERSON					
								APPROVED BY PETERSON					
								DRAWN BY					
								TMK					
								DRAWN FOR					
								PETERSON					
								DATE					
								12/15/94					
								SCALE					
								1:1					
								D					
								6057-005					
								SH. NO. 7 CONT. ON 8					
								REV.					
								A					



REVISIONS						
SYM.	ZONE	DESCRIPTION	DATE	APP.		
A		MAJOR REVISIONS	TMK	10/30/94	DP	
--		This drawing (paper & CAD file) was translated from ASK to ACAD for Web posting & archiving purposes only. There were NO revisions made.			12/02/00	TOC

14 ENDPLATE JOINER BAND
 D-6057-005-08
 SCALE: 1:1
 MAT'L: 316 OR 316L STN.STL. (NON-MAG.)
 QTY: 2 REQ'D.
 NOTE: ALL RADII CONTINUE A FULL 360° GIVING PART A 28.330" OUTSIDE DIA.

GENERAL NOTE:
 MACHINE ALL PARTS DESCRIBED IN DRAWING D-6057-005 (SH.1-15) USING DIMENSIONS PRINTED ON PARTS OR IN ASSOCIATED CHARTS. CAD FILE GEOMETRY MAY NOT AGREE WITH DIMENSIONS SHOWN.

FOR MACHINING LUBRICANT USE ONLY
 ALKALINE DETERGENT LUBRICANT CIMSTAR 40
 OR EQUIVALENT APPROVED BY CORNELL LNS.

ITEM	DWG. NO.	DESCRIPTION	G1	G2	G3	REMARKS	REV.
PRINT	02/02/00						
DISTR.	D-6057-005-08						
UNLESS OTHERWISE SPECIFIED							
DIMENSIONS ARE IN INCHES							
TOLERANCES ON:							
.00 ±.010							
.000 ±.005							
FRACTIONS ±1/64							
ANGLES ±0.5°							
ALL SURFACES 125°							
CHECKED BY	PETERSON	DRAWN BY	TMK	DRAWN FOR	PETERSON	DATE	12/15/94
APPROVED BY	PETERSON	SCALE	AS NOTED	DWG. NO.	D-6057-005	REV.	A

Cornell University
 Floyd R. Newman Laboratory of Nuclear Studies - Ithaca, NY 14853-5001
 CLED PHASE III, DRIFT CHAMBER
 CONICAL ENDPLATE - JOINER BAND 6

STEP DIMENSION CHART

RADIAL DIMENSIONS AND DISTANCE FROM DATUM V (INSIDE Z)

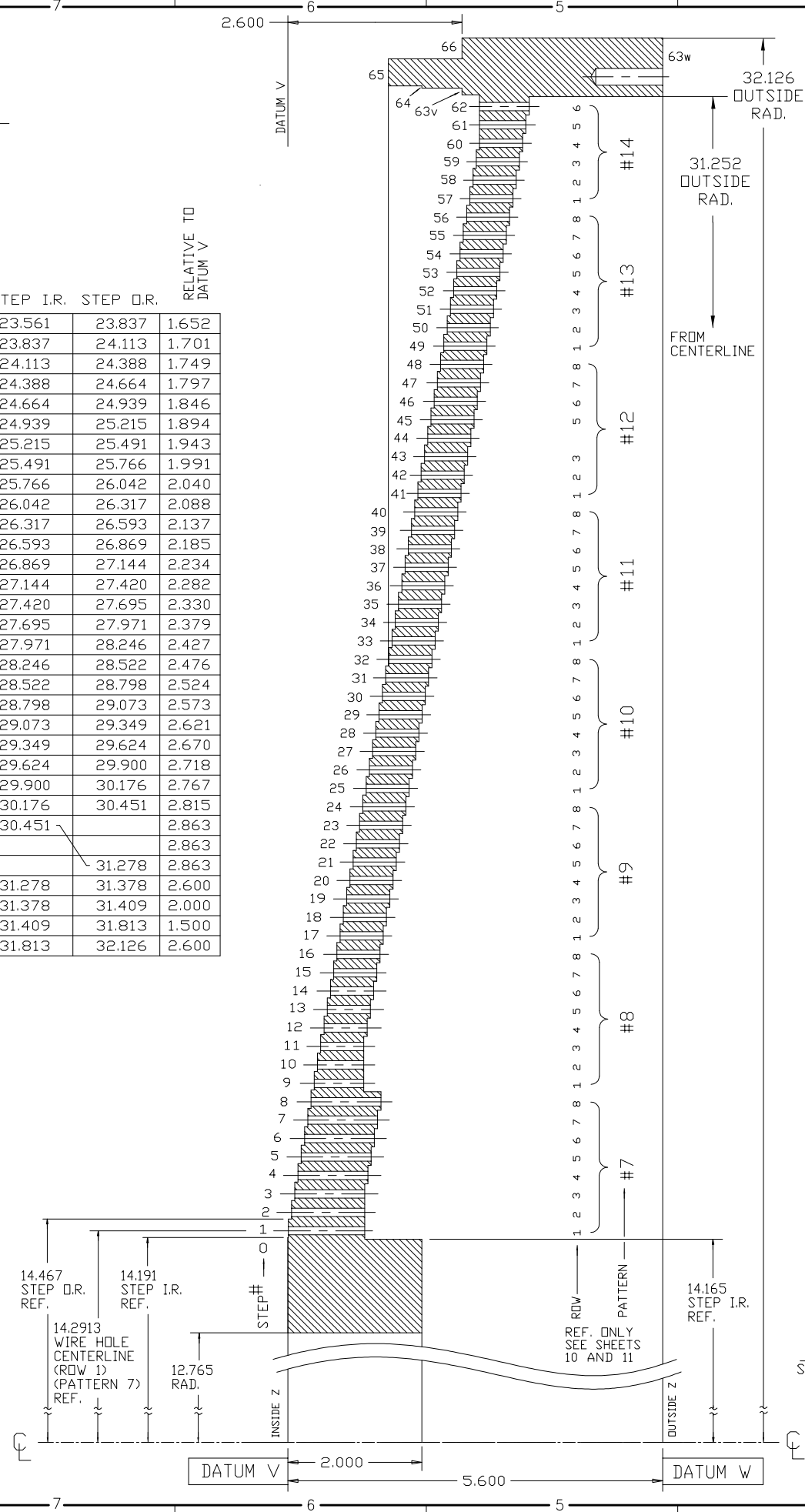
STEP #	PATTERN (REF.)	WIRE HOLE RADIUS (REF.)	STEP I.R.	STEP O.R.	RELATIVE TO DATUM V	STEP #	PATTERN (REF.)	WIRE HOLE RADIUS (REF.)	STEP I.R.	STEP O.R.	RELATIVE TO DATUM V
0	—	—	12.765	14.191	0.000	35	11	23.6614	23.561	23.837	1.652
1	7	14.2913	14.191	14.467	0.005	36	11	23.9370	23.837	24.113	1.701
2	7	14.5669	14.467	14.743	0.053	37	11	24.2126	24.113	24.388	1.749
3	7	14.8425	14.743	15.018	0.102	38	11	24.4882	24.388	24.664	1.797
4	7	15.1181	15.018	15.294	0.150	39	11	24.7638	24.664	24.939	1.846
5	7	15.3937	15.294	15.569	0.198	40	11	25.0394	24.939	25.215	1.894
6	7	15.6693	15.569	15.845	0.247	41	12	25.3150	25.215	25.491	1.943
7	7	15.9449	15.845	16.120	0.295	42	12	25.5906	25.491	25.766	1.991
8	7	16.2205	16.120	16.396	0.344	43	12	25.8661	25.766	26.042	2.040
9	8	16.4961	16.396	16.672	0.392	44	12	26.1417	26.042	26.317	2.088
10	8	16.7717	16.672	16.947	0.441	45	12	26.4173	26.317	26.593	2.137
11	8	17.0472	16.947	17.223	0.489	46	12	26.6929	26.593	26.869	2.185
12	8	17.3228	17.223	17.498	0.538	47	12	26.9685	26.869	27.144	2.234
13	8	17.5984	17.498	17.774	0.586	48	12	27.2441	27.144	27.420	2.282
14	8	17.8740	17.774	18.050	0.635	49	13	27.5197	27.420	27.695	2.330
15	8	18.1496	18.050	18.325	0.683	50	13	27.7953	27.695	27.971	2.379
16	8	18.4252	18.325	18.601	0.731	51	13	28.0709	27.971	28.246	2.427
17	9	18.7008	18.601	18.876	0.780	52	13	28.3465	28.246	28.522	2.476
18	9	18.9764	18.876	19.152	0.828	53	13	28.6220	28.522	28.798	2.524
19	9	19.2520	19.152	19.428	0.877	54	13	28.8976	28.798	29.073	2.573
20	9	19.5276	19.428	19.703	0.925	55	13	29.1732	29.073	29.349	2.621
21	9	19.8032	19.703	19.979	0.974	56	13	29.4488	29.349	29.624	2.670
22	9	20.0787	19.979	20.254	1.022	57	14	29.7244	29.624	29.900	2.718
23	9	20.3543	20.254	20.530	1.071	58	14	30.0000	29.900	30.176	2.767
24	9	20.6299	20.530	20.806	1.119	59	14	30.2756	30.176	30.451	2.815
25	10	20.9055	20.806	21.081	1.168	60	14	30.5512	30.451		2.863
26	10	21.1811	21.081	21.357	1.216	61	14	30.8268			2.863
27	10	21.4567	21.357	21.632	1.264	62	14	31.1024		31.278	2.863
28	10	21.7323	21.632	21.908	1.313	63v			31.278	31.378	2.600
29	10	22.0079	21.908	22.183	1.361	64			31.378	31.409	2.000
30	10	22.2835	22.183	22.459	1.410	65			31.409	31.813	1.500
31	10	22.5591	22.459	22.735	1.458	66			31.813	32.126	2.600
32	10	22.8346	22.735	23.010	1.507						
33	11	23.1102	23.010	23.286	1.555						
34	11	23.3858	23.286	23.561	1.604						

STEP DIMENSION CHART

RADIAL DIMENSIONS AND DISTANCE FROM DATUM W (OUTSIDE Z)

STEP #	PATTERN (REF.)	WIRE HOLE RADIUS (REF.)	STEP I.R.	STEP O.R.	RELATIVE TO DATUM W	STEP #	PATTERN (REF.)	WIRE HOLE RADIUS (REF.)	STEP I.R.	STEP O.R.	RELATIVE TO DATUM W
0	—	—	12.765	14.165	3.600	35	11	23.6614	23.535	23.811	3.304
1	7	14.2913	14.165		4.455	36	11	23.9370	23.811	24.087	3.256
2	7	14.5669			4.455	37	11	24.2126	24.087	24.362	3.207
3	7	14.8425		14.992	4.455	38	11	24.4882	24.362	24.638	3.159
4	7	15.1181	14.992	15.268	4.406	39	11	24.7638	24.638	24.913	3.110
5	7	15.3937	15.268	15.543	4.358	40	11	25.0394	24.913	25.189	3.062
6	7	15.6693	15.543	15.819	4.309	41	12	25.3150	25.189	25.465	3.013
7	7	15.9449	15.819	16.094	4.261	42	12	25.5906	25.465	25.740	2.965
8	7	16.2205	16.094	16.370	4.212	43	12	25.8661	25.740	26.016	2.916
9	8	16.4961	16.370		4.467	44	12	26.1417	26.016	26.291	2.868
10	8	16.7717			4.467	45	12	26.4173	26.291	26.567	2.820
11	8	17.0472		17.197	4.467	46	12	26.6929	26.567	26.843	2.771
12	8	17.3228	17.197	17.472	4.418	47	12	26.9685	26.843	27.118	2.723
13	8	17.5984	17.472	17.748	4.370	48	12	27.2441	27.118	27.394	2.674
14	8	17.8740	17.748	18.024	4.322	49	13	27.5197	27.394	27.669	2.626
15	8	18.1496	18.024	18.299	4.273	50	13	27.7953	27.669	27.945	2.577
16	8	18.4252	18.299	18.575	4.225	51	13	28.0709	27.945	28.220	2.529
17	9	18.7008	18.575	18.850	4.176	52	13	28.3465	28.220	28.496	2.480
18	9	18.9764	18.850	19.126	4.128	53	13	28.6220	28.496	28.772	2.432
19	9	19.2520	19.126	19.402	4.079	54	13	28.8976	28.772	29.047	2.383
20	9	19.5276	19.402	19.677	4.031	55	13	29.1732	29.047	29.323	2.335
21	9	19.8032	19.677	19.953	3.982	56	13	29.4488	29.323	29.598	2.287
22	9	20.0787	19.953	20.228	3.934	57	14	29.7244	29.598	29.874	2.238
23	9	20.3543	20.228	20.504	3.885	58	14	30.0000	29.874	30.150	2.190
24	9	20.6299	20.504	20.780	3.837	59	14	30.2756	30.150	30.425	2.141
25	10	20.9055	20.780	21.055	3.789	60	14	30.5512	30.425	30.701	2.093
26	10	21.1811	21.055	21.331	3.740	61	14	30.8268	30.701	30.976	2.044
27	10	21.4567	21.331	21.606	3.692	62	14	31.1024	30.976	31.252	1.996
28	10	21.7323	21.606	21.882	3.643	63w	—	—	31.252	32.126	0.000
29	10	22.0079	21.882	22.157	3.595						
30	10	22.2835	22.157	22.433	3.546						
31	10	22.5591	22.433	22.709	3.498						
32	10	22.8346	22.709	22.984	3.449						
33	11	23.1102	22.984	23.260	3.401						
34	11	23.3858	23.260	23.535	3.353						

REVISIONS				
SYM	ZONE	DESCRIPTION	DATE	APP.
A		REVISIONS TO CHARTS AND PROFILE	10/30/95	TMK
		This drawing (paper & CAD file) was translated from ASK to ACAD for Web posting & archiving purposes only. There were NO revisions made.	02/01/00	JGL
				DP
				100



7 CONICAL ENDPLATE - PROFILE DIMENSIONS

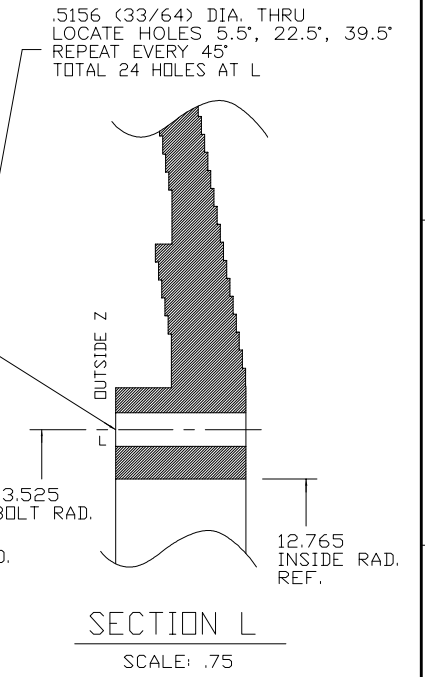
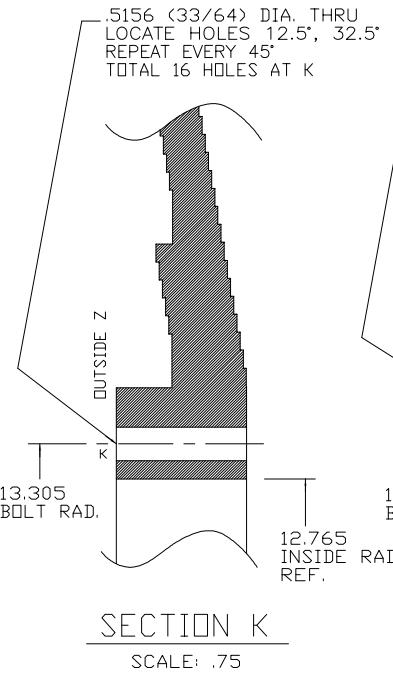
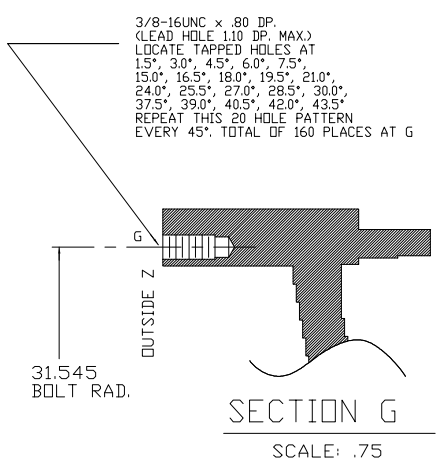
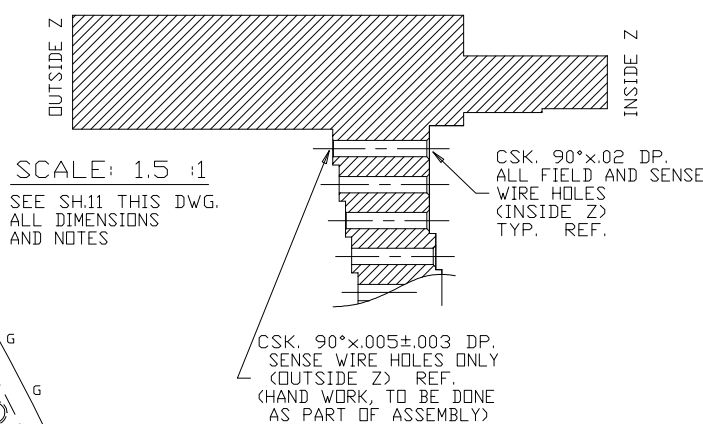
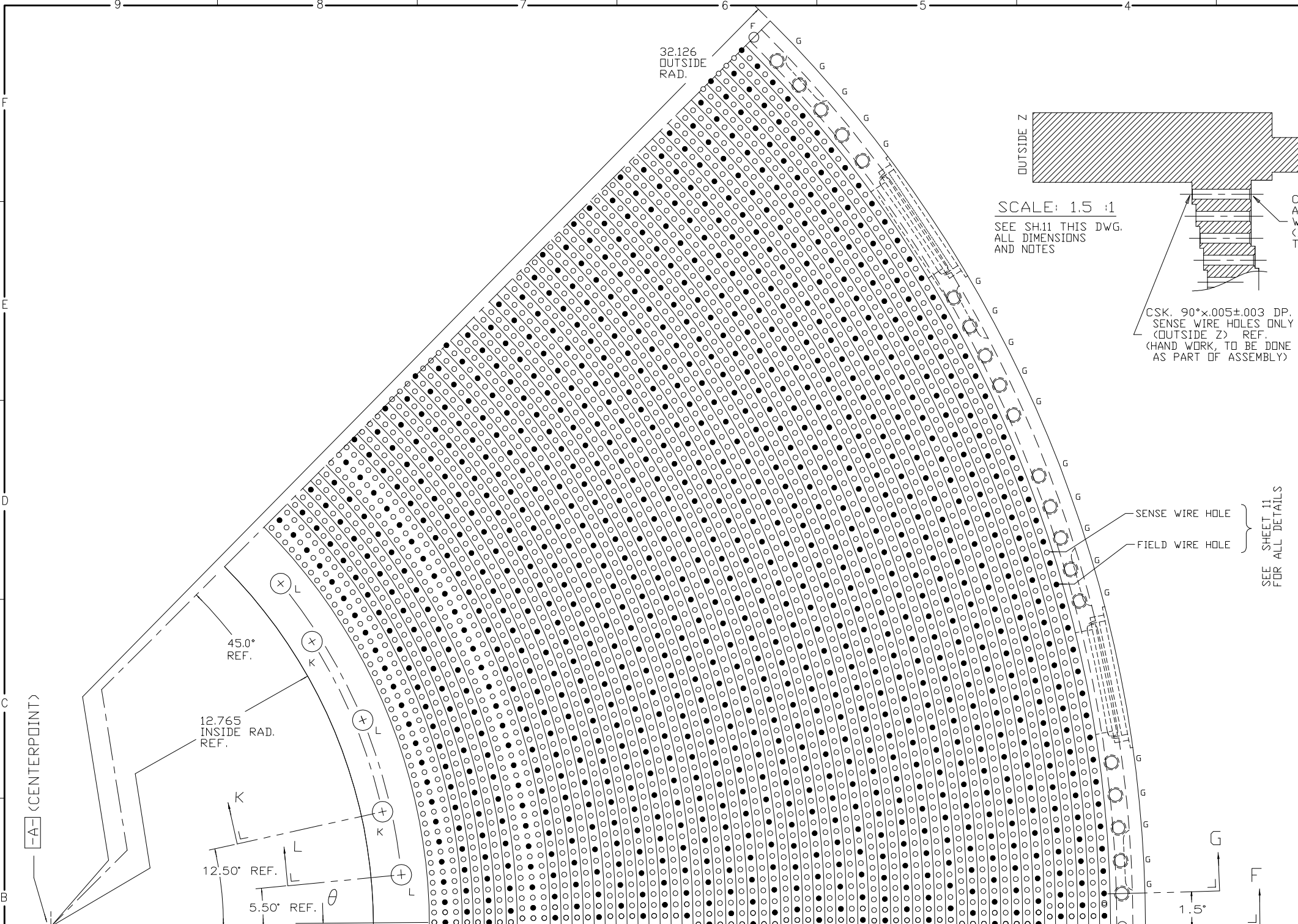
D-6057-005-09
 SCALE: 1:1
 MAT'L: 6061-T6 ALUM.
 QTY: 2 REQ'D.
 NOTE: 1. FOR FURTHER DIMENSIONAL INFORMATION REGARDING FEATURES OF ITEM 7 SEE CHART SHEET 11 AND SHEETS 10, 12, 13, 14 AND 15.

FOR MACHINING LUBRICANT USE ONLY
 ALKALINE DETERGENT LUBRICANT CIMSTAR 40
 OR EQUIVALENT APPROVED BY CORNELL LNS.

GENERAL NOTE:
 MACHINE ALL PARTS DESCRIBED IN DRAWING D-6057-005 (SH.1-15) USING DIMENSIONS PRINTED ON PARTS OR IN ASSOCIATED CHARTS. CAD FILE GEOMETRY MAY NOT AGREE WITH DIMENSIONS SHOWN.

ITEM	DWG. NO.	DESCRIPTION	G1	G2	G3	REMARKS	REV.
			QUANTITY				
PRINT	PLOT DATE 02/01/00						
DISTR.	CAD FILE NAME D-6057-005-09						
6057-005		Cornell University					
SH. NO. 9		Floyd R. Newman Laboratory of Nuclear Studies - Ithaca, NY 14853-5001					
CONT. ON 10		CLED PHASE III, DRIFT CHAMBER					
		CONICAL ENDPLATE - STEP DIMS.					
REV. A	CHECKED BY PETERSON	DRAWN BY PETERSON	DRAWN FOR PETERSON	DATE 11/28/94	SCALE 1:1	D 6057-005	REV. A
	APPROVED BY PETERSON					SH. NO. 9 CONT. ON 10	

REVISIONS				
SYM.	ZONE	DESCRIPTION	DATE	APP.
A		MAJOR REVISIONS	TMK	12/26/95 DP
--		This drawing (paper & CAD file) was translated from ASK to ACAD for Web posting & archiving purposes only. There were NO revisions made.		
				JG

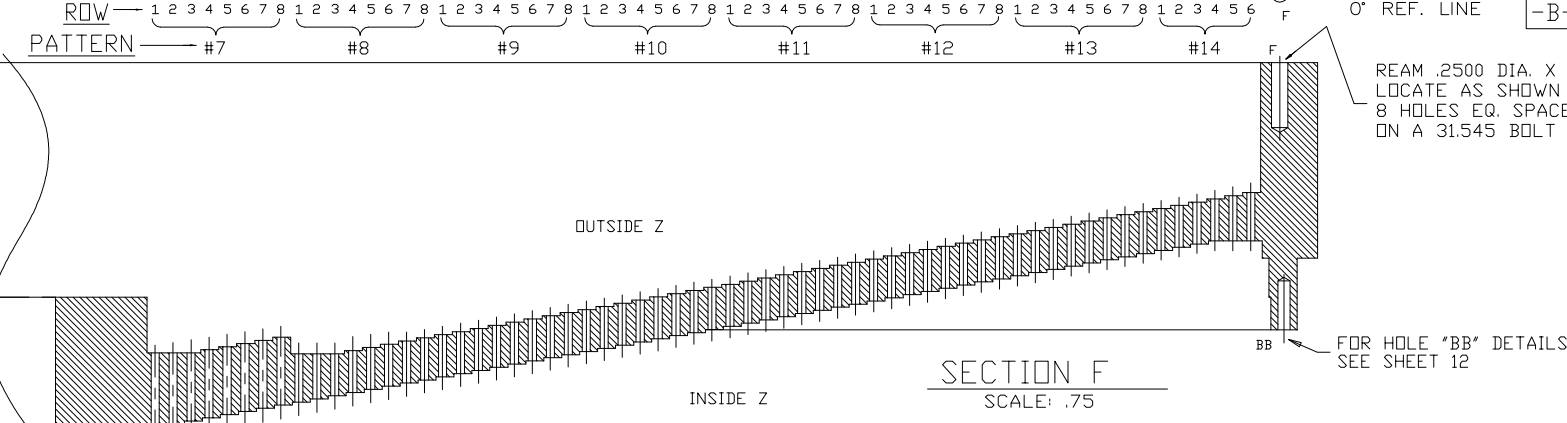


SEE SHEET 11 FOR ALL DETAILS

FOR MACHINING LUBRICANT USE ONLY ALKALINE DETERGENT LUBRICANT CIMSTAR 40 OR EQUIVALENT APPROVED BY CORNELL LNS.

GENERAL NOTE: MACHINE ALL PARTS DESCRIBED IN DRAWING D-6057-005 (SH.1-15) USING DIMENSIONS PRINTED ON PARTS OR IN ASSOCIATED CHARTS. CAD FILE GEOMETRY MAY NOT AGREE WITH DIMENSIONS SHOWN.

VIEW FROM OUTSIDE Z (SEE CHART SHEET 11)
 CONICAL ENDPLATE (EAST + WEST) (OUTSIDE Z VIEW)
 D-6057-005-10
 SCALE: .75
 MAT'L: 6061-T6 ALUM.
 QTY.: 2 REQ'D.
 NOTES: 1. FOR FURTHER DIMENSIONAL INFORMATION REGARDING FEATURES OF ITEM 7 SEE CHART SHEET 11 AND SHEETS 9, 12, 13, 14 AND 15.
 2. THE 45° SEGMENT SHOWN HERE REPEATS TO COMPLETE A FULL 360° WITH NO ACCUMULATION OF TOLERANCES.
 3. THE ONLY DIFFERENCE BETWEEN ITEMS 7A(EAST) AND 7B(WEST) IS THE LOCATION OF MARKER HOLES ("MM") DETAILED ON SH.15.



ITEM	DWG. NO.	DESCRIPTION	G1	G2	G3	REMARKS	REV.
			QUANTITY				
PRINT	PLOT DATE 02/01/00						
DISTR.	CAD FILE NAME D-6057-005-10						
UNLESS OTHERWISE SPECIFIED							
CR-1	DIMENSIONS ARE IN INCHES						
CB-1	TOLERANCES ON:						
JC-1	.00 ±0.010						
	.000 ±0.005						
	FRACTIONS ±1/64						
	ANGLES ±0.5°						
	ALL SURFACES 125°						
CHECKED BY PETERSON	DRAWN BY	DRAWN FOR	DATE	SCALE			
APPROVED BY PETERSON	TMK	PETERSON	12/15/94	.75			

Cornell University
 Floyd R. Newman Laboratory of Nuclear Studies - Ithaca, NY 14853-5001
 CLED PHASE III, DRIFT CHAMBER
 CONICAL ENDPLATE - OUTSIDE Z VIEW

REV. A	D 6057-005	REV. A
	SH. NO. 10 CONT. ON 11	

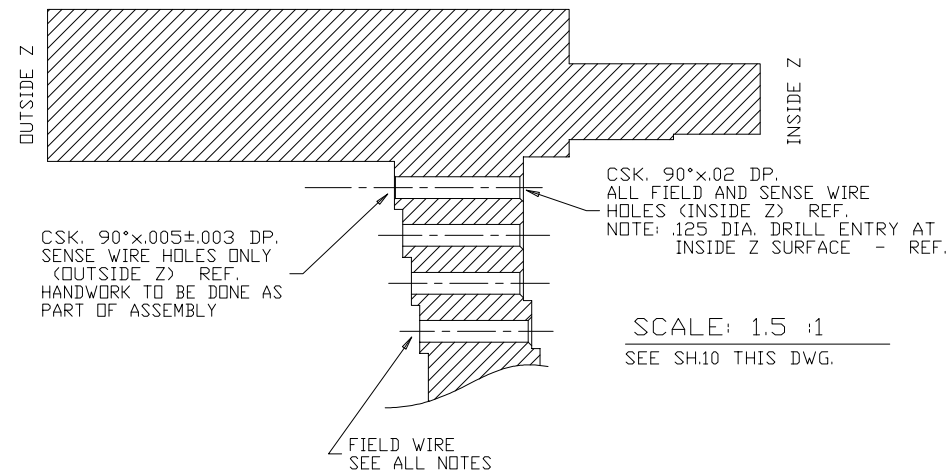
CHART TO LOCATE FIELD AND SENSE WIRE HOLES ITEM 7 (EAST + WEST), SH.10

REVISIONS				
SYM.	ZONE	DESCRIPTION	DATE	APP.
A		MAJOR REVISIONS	TMK 12/30/95	DP
B		CORRECTED NUMERICAL ERRORS AT PATTERN 13 AND PATTERN 9	TMK 12/24/96	DP
--		This drawing (paper & CAD file) was translated from ASK to ACAD for Web posting & archiving purposes only. There were NO revisions made.	JGL 12/01/00	TOC

	PATTERN 7	PATTERN 8	PATTERN 9	PATTERN 10	PATTERN 11	PATTERN 12	PATTERN 13	PATTERN 14
RDW 1 RAD.	14.289	16.499	18.707	20.914	23.119	25.323	27.526	29.728
RDW 2 RAD.	14.566	16.776	18.984	21.190	23.395	25.599	27.801	30.004
RDW 3 RAD.	14.838	17.048	19.256	21.462	23.667	25.871	28.074	30.277
RDW 4 RAD.	15.115	17.325	19.532	21.738	23.943	26.147	28.350	30.552
RDW 5 RAD.	15.387	17.597	19.805	22.011	24.216	26.420	28.623	30.825
RDW 6 RAD.	15.664	17.873	20.081	22.287	24.492	26.695	28.898	31.100
RDW 7 RAD.	15.936	18.145	20.353	22.559	24.764	26.968	29.171	X
RDW 8 RAD.	16.212	18.422	20.629	22.835	25.040	27.244	29.447	X

	PATTERN 7	PATTERN 8	PATTERN 9	PATTERN 10	PATTERN 11	PATTERN 12	PATTERN 13	PATTERN 14
FIRST HOLE OFFSET FROM θ RDW 1 # HOLES EQ. SP. AROUND 360° RDW 1	0.408"	0.712"	0.787"	0.140"	0.403"	0.336"	0.150"	0.478"
FIRST HOLE OFFSET FROM θ RDW 2 # HOLES EQ. SP. AROUND 360° RDW 2	1.408"	0.712"	0.784"	0.858"	0.400"	0.939"	0.147"	0.998"
FIRST HOLE OFFSET FROM θ RDW 3 # HOLES EQ. SP. AROUND 360° RDW 3	0.408"	0.712"	0.781"	0.147"	0.397"	0.341"	0.144"	0.483"
FIRST HOLE OFFSET FROM θ RDW 4 # HOLES EQ. SP. AROUND 360° RDW 4	0.404"	1.598"	1.567"	0.150"	1.046"	0.344"	0.697"	0.486"
FIRST HOLE OFFSET FROM θ RDW 5 # HOLES EQ. SP. AROUND 360° RDW 5	0.400"	0.719"	0.774"	0.153"	0.391"	0.347"	0.138"	0.488"
FIRST HOLE OFFSET FROM θ RDW 6 # HOLES EQ. SP. AROUND 360° RDW 6	1.396"	0.723"	0.770"	0.871"	0.388"	0.950"	0.136"	1.008"
FIRST HOLE OFFSET FROM θ RDW 7 # HOLES EQ. SP. AROUND 360° RDW 7	0.392"	0.727"	0.767"	0.160"	0.385"	0.353"	0.133"	X
FIRST HOLE OFFSET FROM θ RDW 8 # HOLES EQ. SP. AROUND 360° RDW 8	0.388"	1.612"	1.553"	0.163"	1.034"	0.356"	0.685"	X

	PATTERN 7	PATTERN 8	PATTERN 9	PATTERN 10	PATTERN 11	PATTERN 12	PATTERN 13	PATTERN 14
FIRST HOLE OFFSET FROM θ RDW 2 # HOLES EQ. SP. AROUND 360° RDW 2	0.401"	1.600"	1.568"	0.148"	1.048"	0.342"	0.699"	0.484"
FIRST HOLE OFFSET FROM θ RDW 4 # HOLES EQ. SP. AROUND 360° RDW 4	1.397"	0.721"	0.772"	0.869"	0.390"	0.948"	0.138"	1.006"
FIRST HOLE OFFSET FROM θ RDW 6 # HOLES EQ. SP. AROUND 360° RDW 6	0.390"	1.611"	1.555"	0.161"	1.036"	0.354"	0.688"	0.494"
FIRST HOLE OFFSET FROM θ RDW 8 # HOLES EQ. SP. AROUND 360° RDW 8	1.382"	0.736"	0.759"	0.882"	0.378"	0.960"	0.126"	X



FIELD WIRE HOLES \circ
 +.001
 .125-.000 DIA. THRU
 DRILL ENTRY AND TRUE POSITION
 TOL. ARE AT INSIDE Z SURFACE.
 $\text{H}009\text{A}1\text{B}$ (SEE SH.10)
 CSK. 90° x .02 DP.
 (INSIDE Z FACE ONLY)
 SEE NOTES 1, 2 AND 3.
 TOTAL FIELD WIRE HOLES = 24,300

SENSE WIRE HOLES \bullet
 +.001
 .125-.000 DIA. THRU
 DRILL ENTRY AND TRUE POSITION
 TOL. ARE AT INSIDE Z SURFACE.
 $\text{H}006\text{A}1\text{B}$ (SEE SH. 10)
 CSK. 90° x .02 DP.
 (INSIDE Z FACE ONLY)
 SEE NOTES 1, 2 AND 3.
 CSK. 90° x .005 DP±.003 } HANDWORK TO BE DONE AS
 (OUTSIDE Z FACE ONLY) } PART OF ASSEMBLY
 TOTAL SENSE WIRE HOLES = 8,100

ENDPLATE SENSE + FIELD WIRE LOCATION DIMENSION CHART

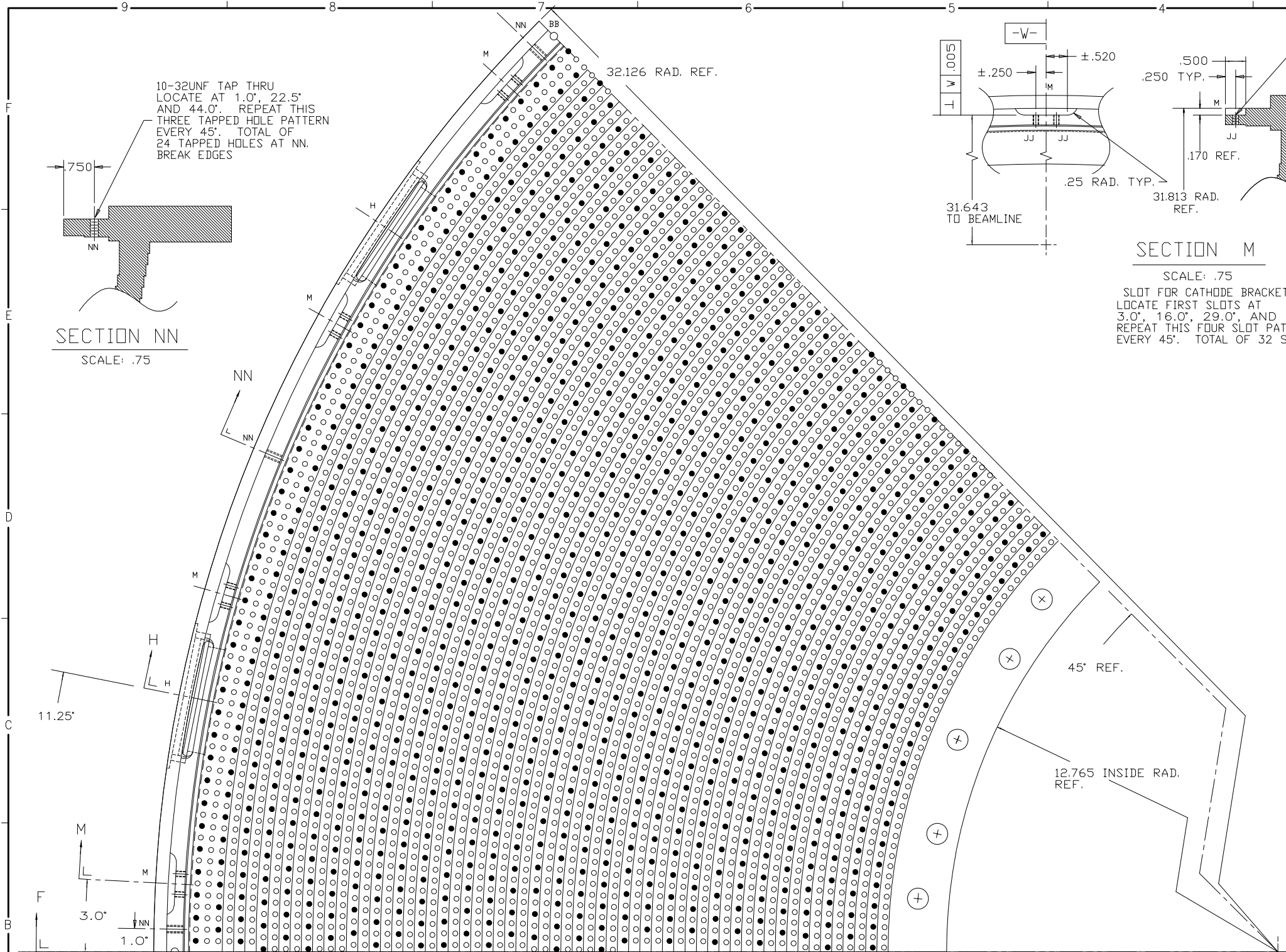
- 7
 D-6057-005-11
 SEE SHEETS 9, 10, 12, 13 AND 14 AND 15.
 NOTES: 1. DRILL WANDER FOR SENSE AND FIELD WIRE HOLES TO BE LESS THAN .003".
 2. DRILL RISE FOR FIELD AND SENSE WIRE HOLES (OUTSIDE Z SURFACE) TO BE LESS THAN .002".
 3. DEBURR FIELD AND SENSE WIRE HOLES FLUSH WITH OUTSIDE Z SURFACE.

FOR MACHINING LUBRICANT USE ONLY
 ALKALINE DETERGENT LUBRICANT CIMSTAR 40
 OR EQUIVALENT APPROVED BY CORNELL LNS.

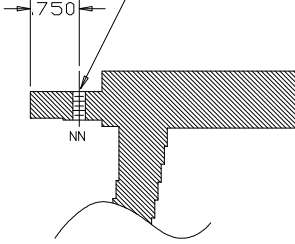
GENERAL NOTE:
 MACHINE ALL PARTS DESCRIBED IN
 DRAWING D-6057-005 (SH.1-15)
 USING DIMENSIONS PRINTED ON PARTS
 OR IN ASSOCIATED CHARTS.
 CAD FILE GEOMETRY MAY NOT AGREE
 WITH DIMENSIONS SHOWN.

ALL DIMENSIONS HERE ARE BASIC
 FIELD WIRE HOLES
 NOTE: .125 DIA. DRILL ENTRY AT INSIDE Z SURFACE - REF.
 SENSE WIRE HOLES
 NOTE: .125 DIA. DRILL ENTRY AT INSIDE Z SURFACE - REF.

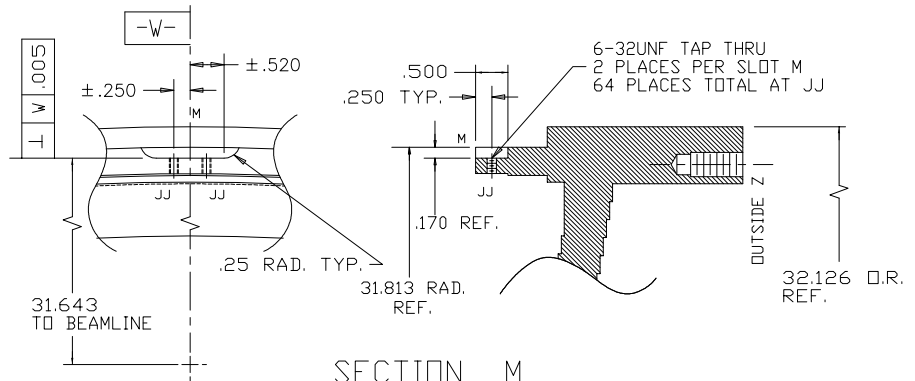
ITEM	DWG. NO.	DESCRIPTION	G1	G2	G3	REMARKS	REV.
			QUANTITY				
6057-005-11		PLOT DATE 02/01/00 CAD FILE NAME D-6057-005-11					
UNLESS OTHERWISE SPECIFIED		Cornell University					
DIMENSIONS ARE IN INCHES		Floyd R. Newman Laboratory of Nuclear Studies - Ithaca, NY 14853-5001					
TOLERANCES ON:		CLEO PHASE III, DRIFT CHAMBER					
.00±0.010		CONICAL ENDPLATE - SENSE + FIELD					
.000±0.005		WIRE LOCATION DIMENSION CHART					
FRACTIONS ±1/64							
ANGLES ±0.5°							
ALL SURFACES 125°							
CHECKED BY	PETERSON	DRAWN BY	TMK	DRAWN FOR	PETERSON	DATE	12/15/94
APPROVED BY	PETERSON	SCALE	1.5:1	DWG. NO.	6057-005	REV.	B
						SH. NO. 11	CONT. ON 12



10-32UNF TAP THRU
LOCATE AT 1.0", 22.5"
AND 44.0". REPEAT THIS
THREE TAPPED HOLE PATTERN
EVERY 45°. TOTAL OF
24 TAPPED HOLES AT NN.
BREAK EDGES

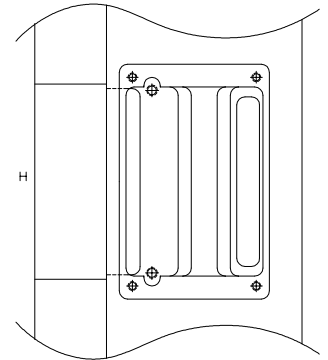


SECTION NN
SCALE: .75

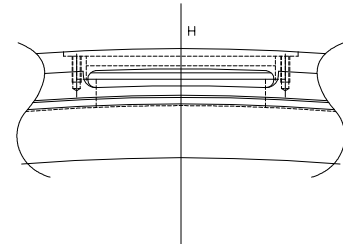


SECTION M
SCALE: .75
SLOT FOR CATHODE BRACKET
LOCATE FIRST SLOTS AT
3.0", 16.0", 29.0", AND 42.0".
REPEAT THIS FOUR SLOT PATTERN
EVERY 45°. TOTAL OF 32 SLOTS AT M

REVISIONS				
SYM.	ZONE	DESCRIPTION	DATE	APP.
A		MAJOR REVISIONS	TMK 10/30/95	DP
B		ADDED NN TAP HOLES	TMK 7/18/96	DP
		This drawing (paper & CAD file) was translated from ASK to ACAD for Web posting & archiving purposes only. There were NO revisions made.		
			1/28/00	TOC



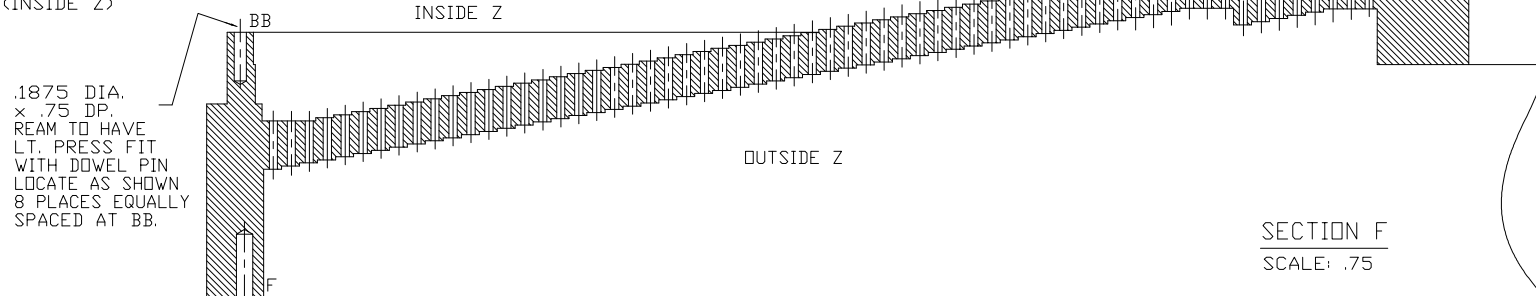
SECTION H
SCALE: .75
CATHODE MOUNTING CONFIGURATION
LOCATE FIRST SLOT
AT 11.25" AS SHOWN
TOTAL OF 16 PLACES
EQUALLY SPACED AT H
NOTE: DETAIL DIMENSIONS OF THIS
CONFIGURATION FOUND ON SH.13 THIS DWG.



CONICAL ENDPLATE (EAST + WEST)
(INSIDE Z VIEW)

D-6057-005-12
SCALE: .75
MAT'L: SEE ITEM 7, THIS DWG. SH.10
NOTES: 1. FOR FURTHER DIMENSIONAL
INFORMATION REGARDING
FEATURES OF ITEM 7 SEE
CHART SHEET 11 AND
SHEETS 9, 10, 13, 14 AND 15.
2. THE 45° SEGMENT SHOWN HERE
REPEATS TO COMPLETE A FULL
360° WITH NO ACCUMULATION OF
TOLERANCES.

NOTE: THIS IS THE SAME
SECTOR OF ITEM 7 SHOWN
ON SHEET 10 BUT IT HAS
BEEN FLIPPED OVER TO
SHOW OPPOSITE SIDE
(INSIDE Z)



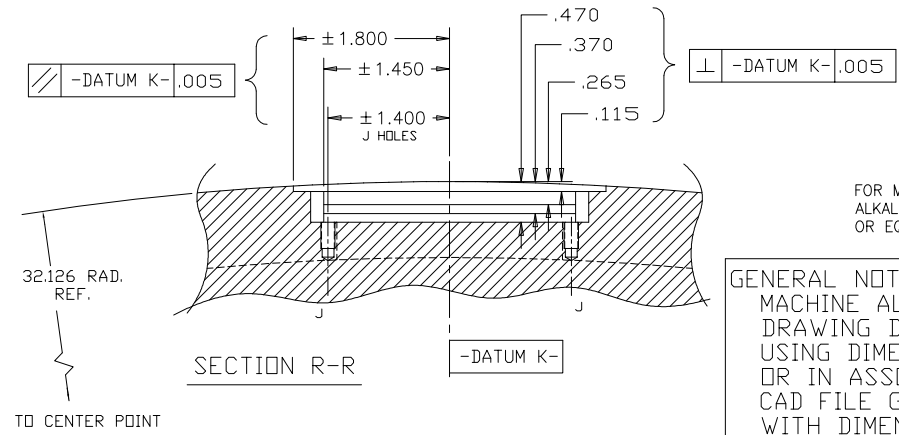
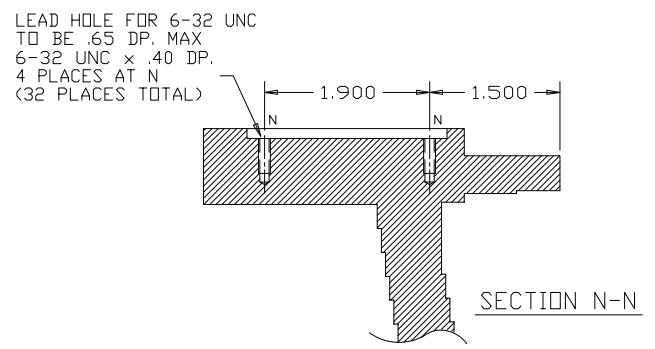
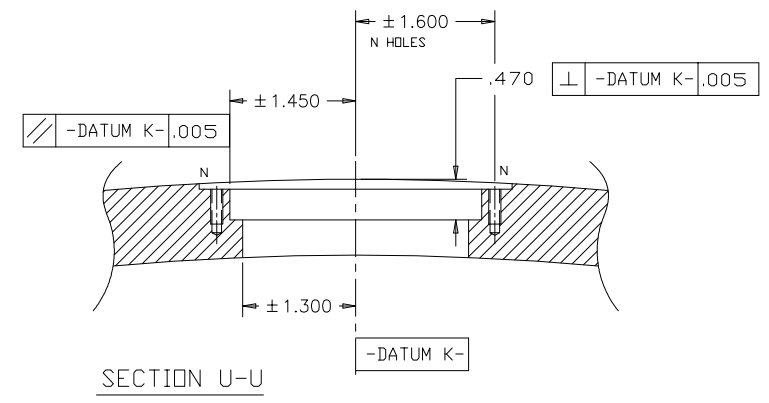
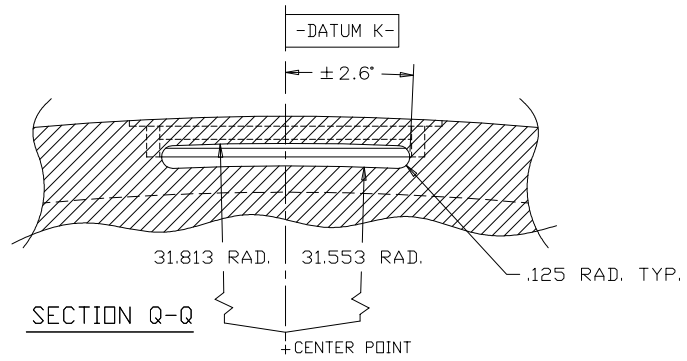
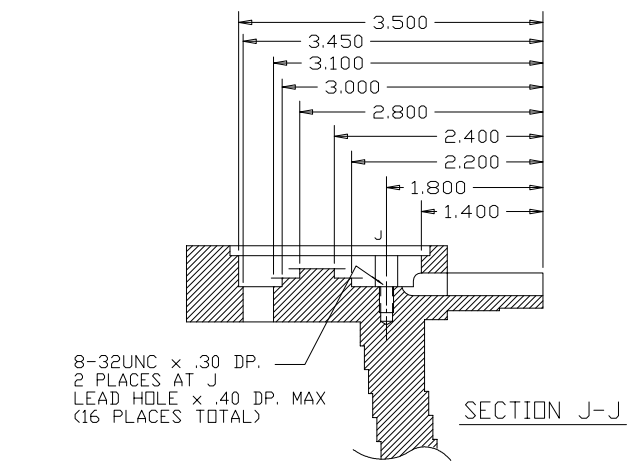
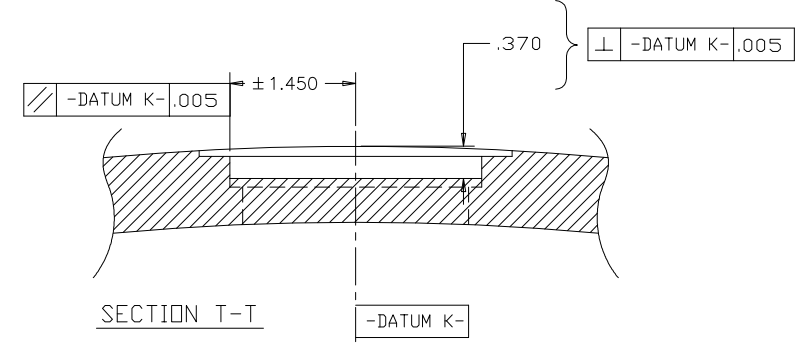
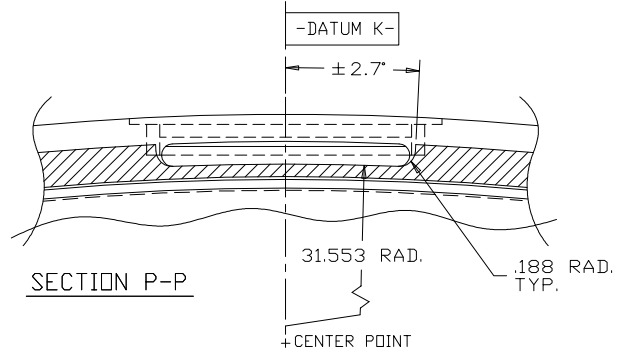
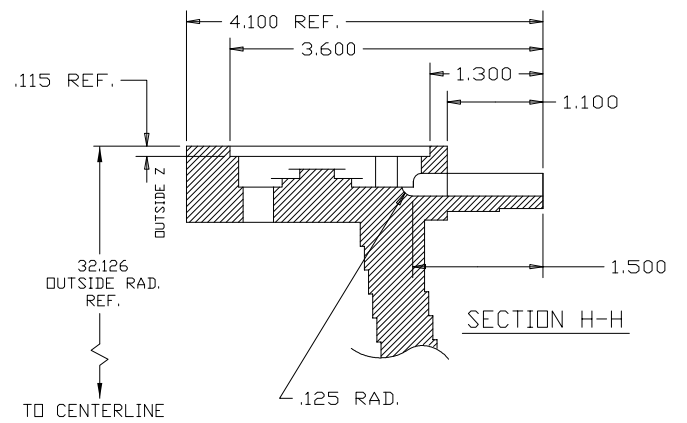
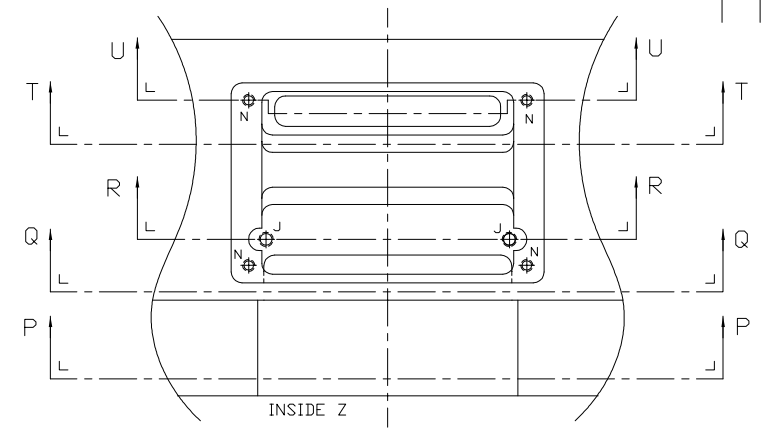
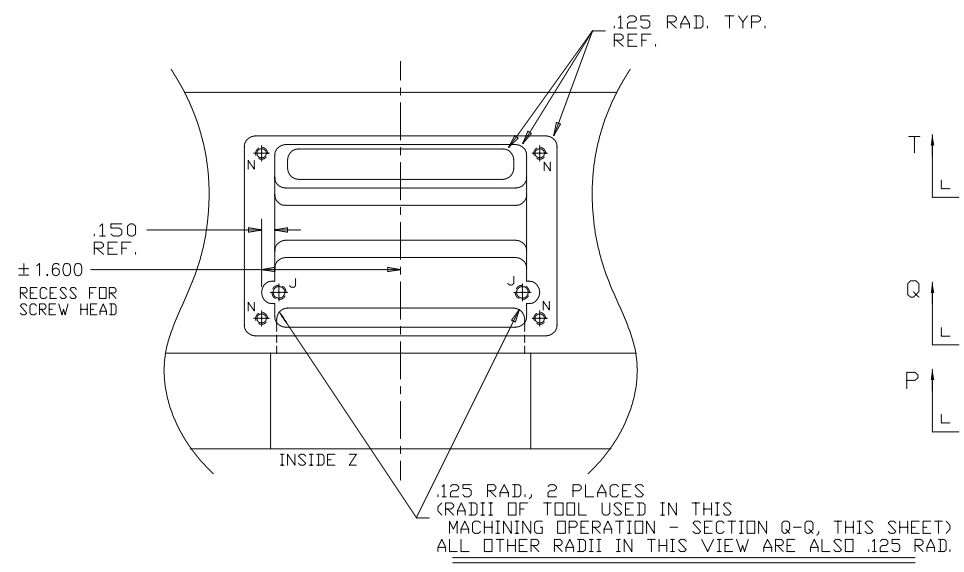
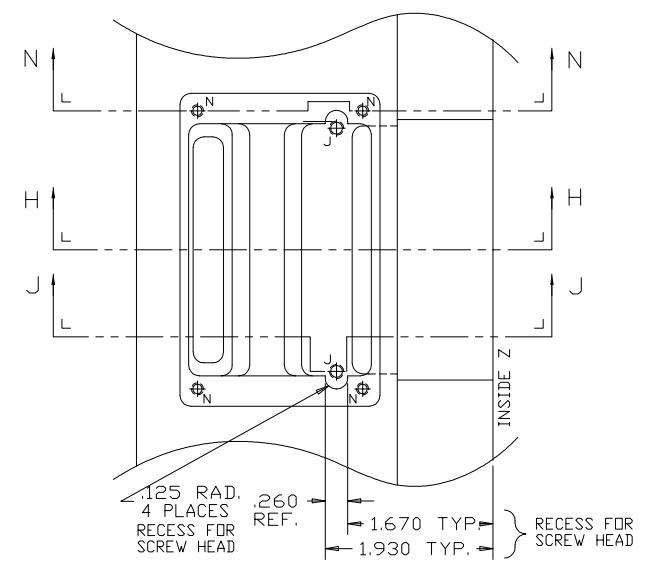
SECTION F
SCALE: .75

FOR MACHINING LUBRICANT USE ONLY
ALKALINE DETERGENT LUBRICANT CIMSTAR 40
OR EQUIVALENT APPROVED BY CORNELL LNS.

GENERAL NOTE:
MACHINE ALL PARTS DESCRIBED IN
DRAWING D-6057-005 (SH.1-15)
USING DIMENSIONS PRINTED ON PARTS
OR IN ASSOCIATED CHARTS.
CAD FILE GEOMETRY MAY NOT AGREE
WITH DIMENSIONS SHOWN.

ITEM	DWG. NO.	DESCRIPTION	G1	G2	G3	REMARKS	REV.
			QUANTITY				
PRINT	PLOT DATE 01/31/00						
DISTR.	CAD FILE NAME D-6057-005-12						
UNLESS OTHERWISE SPECIFIED		Cornell University					
DIMENSIONS ARE IN INCHES		Floyd R. Newman Laboratory of Nuclear Studies - Ithaca, NY 14853-5001					
TOLERANCES ON:		CLEO PHASE III, DRIFT CHAMBER					
.00 ±0.010		CONICAL ENDPLATE - INSIDE Z VIEW					
.000 ±0.005							
FRACTIONS ±1/64							
ANGLES ±0.5°							
ALL SURFACES 125°							
CHECKED BY PETERSON	DRAWN BY TMK	DRAWN FOR PETERSON	DATE 12/15/94	SCALE .75	D 6057-005		REV. B
APPROVED BY PETERSON					SH. NO. 12 CONT. ON 13		

REVISIONS				
SYM.	ZONE	DESCRIPTION	DATE	APP.
A		REVISION TO PART PROFILE	11/7/95	DP
--		This drawing (paper & CAD file) was translated from ASK to ACAD for Web posting & archiving purposes only. There were NO revisions made.	1/28/00	TOC



7 CONICAL ENDPLATE CATHODE MOUNTING CONFIGURATION

D-6057-005-13
SCALE: 1:1
NOTE: THIS SHEET FURTHER DEFINES THE CATHODE MOUNTING CONFIGURATION OF ITEM 7 SHOWN ON SHEET 12, THIS DWG.

FOR MACHINING LUBRICANT USE ONLY
ALKALINE DETERGENT LUBRICANT CIMSTAR 40
OR EQUIVALENT APPROVED BY CORNELL LNS.

GENERAL NOTE:
MACHINE ALL PARTS DESCRIBED IN
DRAWING D-6057-005 (SH.1-15)
USING DIMENSIONS PRINTED ON PARTS
OR IN ASSOCIATED CHARTS.
CAD FILE GEOMETRY MAY NOT AGREE
WITH DIMENSIONS SHOWN.

REV.	ITEM	DWG. NO.	DESCRIPTION	G1	G2	G3	REMARKS	REV.
				QUANTITY				
D	PRINT		PLOT DATE 01/31/00					
SH. NO. 13	DISTR.		CAD FILE NAME D-6057-005-13					
6057-005	CR-1		UNLESS OTHERWISE SPECIFIED					
SH. NO. 13	CB-1		DIMENSIONS ARE IN INCHES					
REV. A	JC-1		TOLERANCES ON:					
			.00 ±0.010					
			.000 ±0.005					
			FRACTIONS ±1/64					
			ANGLES ±0.5°					
			ALL SURFACES 125					
	CHECKED BY	PETERSON	DRAWN BY	PETERSON	DRAWN FOR	DATE	SCALE	
	APPROVED BY	PETERSON	TMK	PETERSON		12/15/94	1:1	

Cornell University
Floyd R. Newman Laboratory of Nuclear Studies - Ithaca, NY 14853-5001

CLEO PHASE III, DRIFT CHAMBER
CONICAL ENDPLATE -
CATHODE MOUNTING CONFIG. DETAIL

D 6057-005
SH. NO. 13 CONT. ON 14

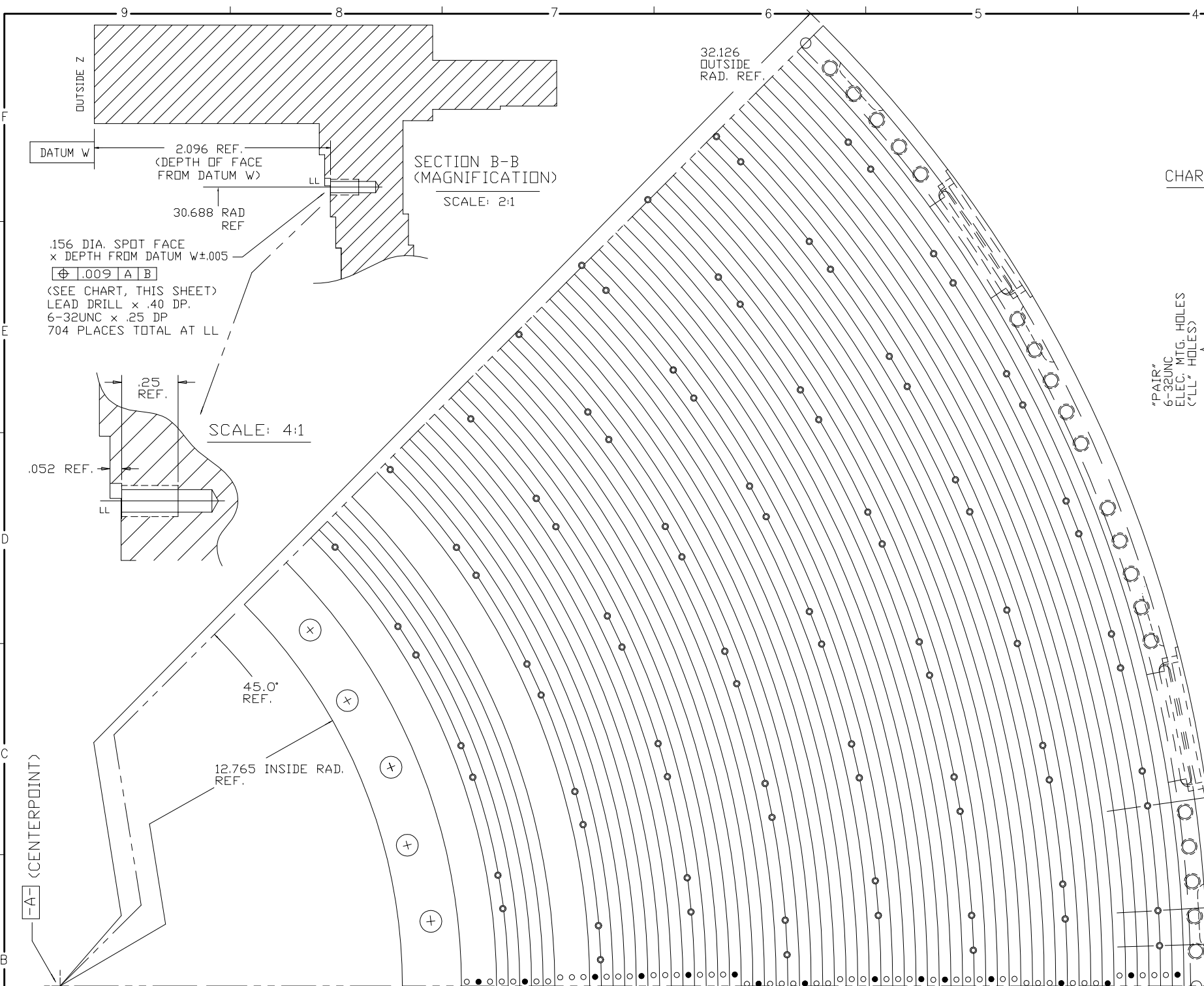
REVISIONS				
SYM.	ZONE	DESCRIPTION	DATE	APP.
A		MAJOR REVISIONS	TMK	10/30/95 DP
		This drawing (paper & CAD file) was translated from ASK to ACAD for Web posting & archiving purposes only. There were NO revisions made.		
			1/28/00	TOC

CHART TO LOCATE ELECTRONICS MOUNTING HOLES (OUTSIDE Z) ITEM 7 (EAST + WEST)

NOTE: BOLT CIRCLES OF THE 6-32UNC ELEC. MTG. HOLES ("LL") FALL WITHIN THESE SENSE / FIELD WIRE PATTERNS. REF.

	PATTERN 7	PATTERN 8	PATTERN 9	PATTERN 10	PATTERN 11	PATTERN 12	PATTERN 13	PATTERN 14
DEPTH OF "FACE" FROM DATUM W	4.410	4.422	4.034	3.647	3.259	2.872	2.484	2.096
RAD.	15.251	17.461	19.668	21.875	24.080	26.283	28.486	30.688
ANGLE OF FIRST HOLE OF "PAIR" OFFSET FROM O'	6.897°	2.045°	5.114°	1.940°	3.977°	1.848°	3.193°	1.782°
ANGLE OF SECOND HOLE OF "PAIR" OFFSET FROM O'	9.897°	4.692°	7.483°	4.083°	5.933°	3.648°	4.860°	3.334°
ANGLE OF ROTATION OF "PAIR"	12.0000°	10.5882°	9.4737°	8.5714°	7.8261°	7.2000°	6.6667°	6.2069°
# OF REPETITIONS OF "PAIR"	30	34	38	42	46	50	54	58
TOTAL # "LL" HOLES ON RAD.	60	68	76	84	92	100	108	116

ALL DIMENSIONS HERE ARE BASIC

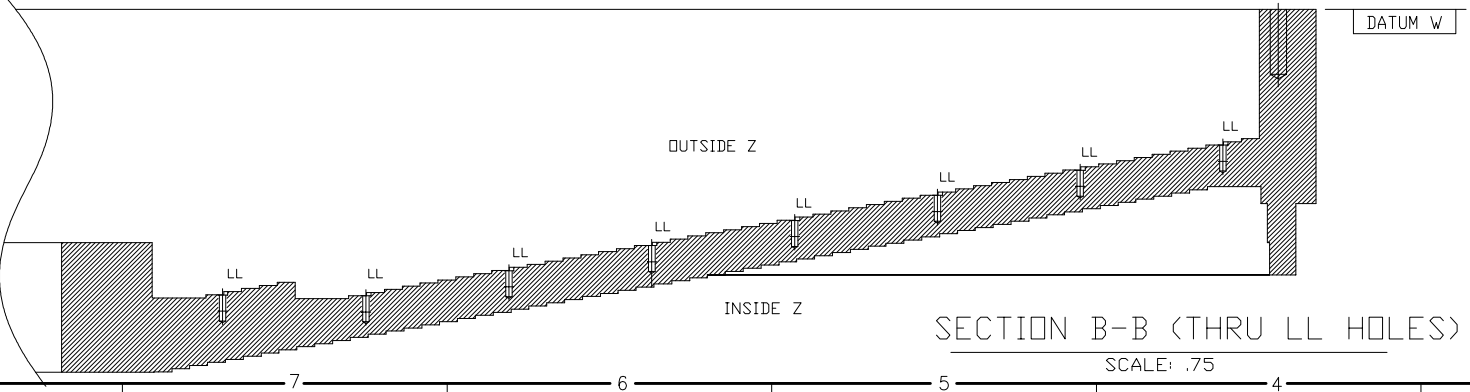


FOR MACHINING LUBRICANT USE ONLY ALKALINE DETERGENT LUBRICANT CIMSTAR 40 OR EQUIVALENT APPROVED BY CORNELL LNS.

GENERAL NOTE: MACHINE ALL PARTS DESCRIBED IN DRAWING D-6057-005 (SH.1-15) USING DIMENSIONS PRINTED ON PARTS OR IN ASSOCIATED CHARTS. CAD FILE GEOMETRY MAY NOT AGREE WITH DIMENSIONS SHOWN.

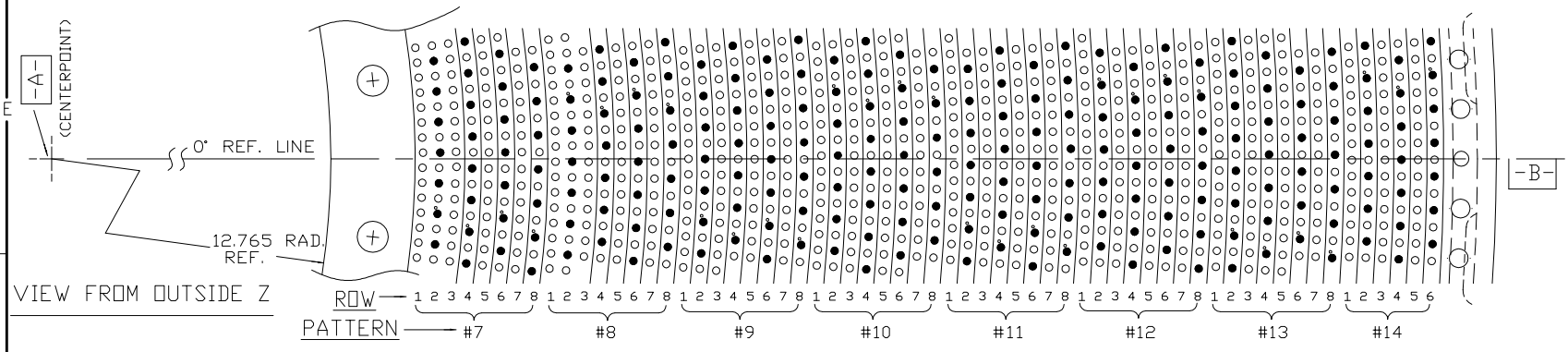
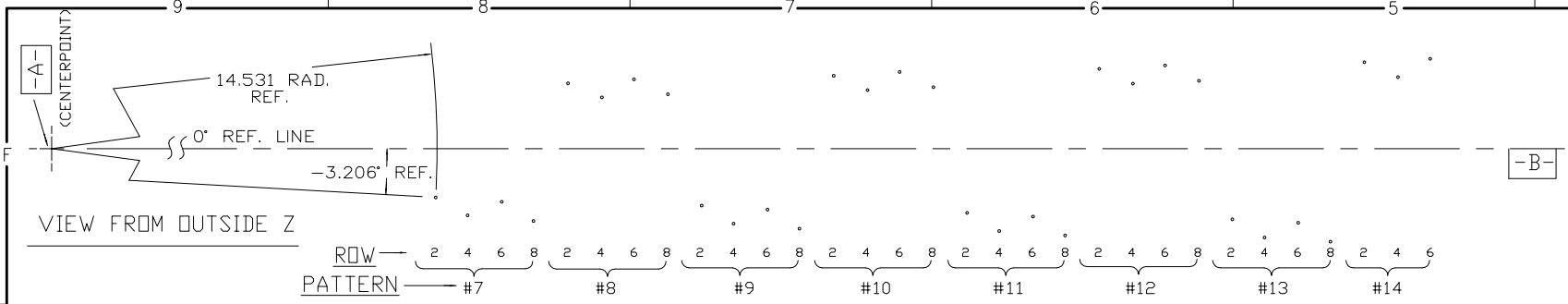
7 CONICAL ENDPLATE, (EAST + WEST) PREAMP MOUNTING HOLES

- D-6057-005-14
SCALE: .75
MAT'L: SEE ITEM 7 THIS DWG., SH.10
NOTES: 1. FOR FURTHER DIMENSIONAL INFORMATION REGARDING FEATURES OF ITEM 7 SEE CHART SHEET 11 AND SHEETS 9, 10, 12, 13 AND 15. 2. THE 45° SEGMENT SHOWN HERE REPEATS TO COMPLETE A FULL 360° WITH NO ACCUMULATION OF TOLERANCES. 3. FIELD AND SENSE WIRES ARE NOT SHOWN ON THIS SHEET EXCEPT ON 0° REF. LINE SO AS TO MORE CLEARLY DEFINE "LL" HOLES.

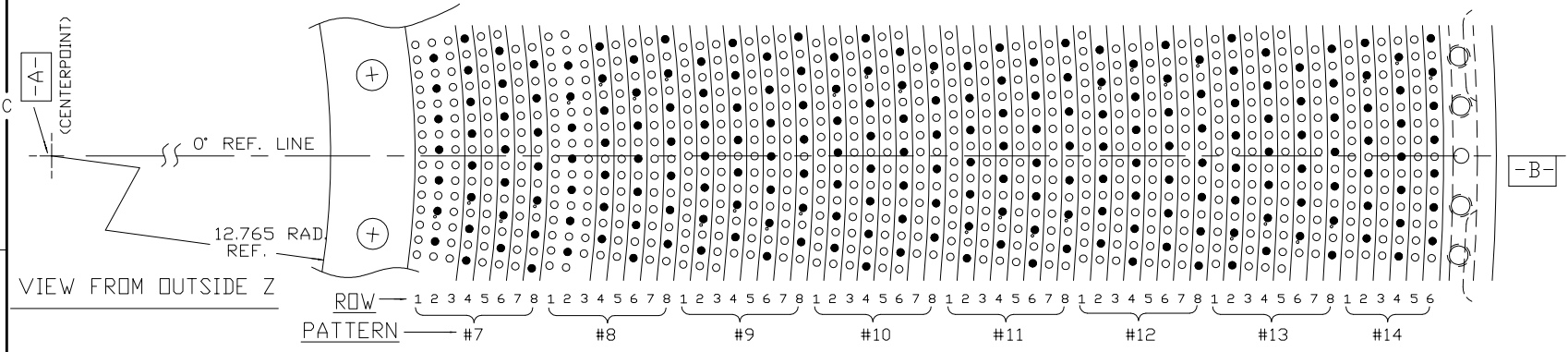


ITEM	DWG. NO.	DESCRIPTION	G1	G2	G3	REMARKS	REV.
			QUANTITY				
PRINT	PLOT DATE 01/25/00						
DISTR.	CAD FILE NAME D-6057-005-14						
6057-005 REV. 14 (REV. 01.15)	UNLESS OTHERWISE SPECIFIED		Cornell University				
	DIMENSIONS ARE IN INCHES		Floyd R. Newman Laboratory of Nuclear Studies - Ithaca, NY 14853-5001				
	TOLERANCES ON:		CLEO PHASE III, DRIFT CHAMBER				
	CONICAL ENDPLATE, OUTER Z		PREAMP MOUNTING HOLES				
CR-1	0.00 ± 0.010						
CB-1	0.00 ± 0.005						
JC-1	FRACTIONS ± 1/64						
	ANGLES ± 0.5°						
	ALL SURFACES 125						
CHECKED BY PETERSON	DRAWN BY	DRAWN FOR	DATE	SCALE	D 6057-005	REV.	
APPROVED BY PETERSON	TMK	PETERSON	1/11/95	1/2	SH. NO. 14 CONT. ON 15	A	

REVISIONS				
SYM.	ZONE	DESCRIPTION	DATE	APP.
--		This drawing (paper & CAD file) was translated from ASK to ACAD for Web posting & archiving purposes only. There were NO revisions made.	1/28/00	TOC



7A CONICAL ENDPLATE - EAST MARKER HOLE ("MM") LOCATIONS
 D-6057-005-15
 SCALE: .75
 MAT'L: SEE SHEETS 9, 10, 11, 12, 13 AND 14
 QTY.: 1 REQ'D. (EAST ENDPLATE)



7B CONICAL ENDPLATE - WEST MARKER HOLE ("MM") LOCATIONS
 D-6057-005-15
 SCALE: .75
 MAT'L: SEE SHEETS 9, 10, 11, 12, 13 AND 14
 QTY.: 1 REQ'D. (WEST ENDPLATE)

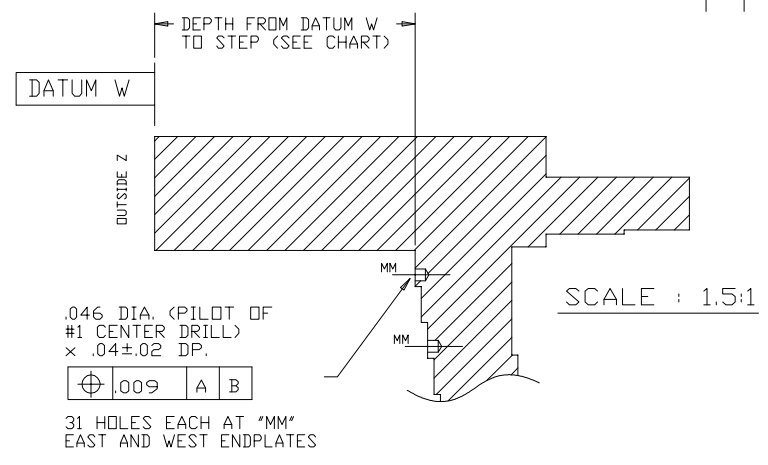
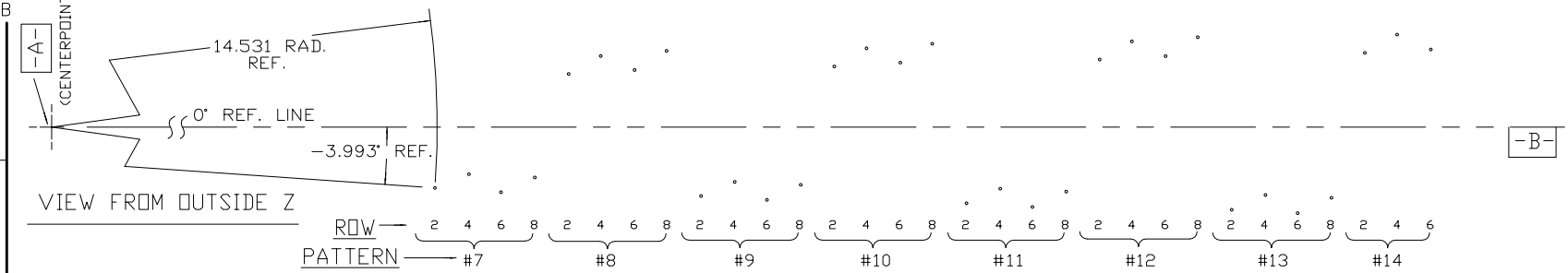


CHART TO LOCATE .046 DIA. MARKING HOLES (OUTSIDE Z) ITEM 7 (EAST + WEST)

NOTE: BOLT CIRCLES OF THE .046 DIA. MARKER HOLES ("MM") FALL WITHIN THESE SENSE / FIELD WIRE PATTERNS. REF.

	PATTERN 7	PATTERN 8	PATTERN 9	PATTERN 10	PATTERN 11	PATTERN 12	PATTERN 13	PATTERN 14
DEPTH FROM DATUM W TO STEP (REF. SEE SH. 9)	4.455	4.467	4.128	3.740	3.353	2.965	2.577	2.190
RDW 2 RAD.	14.531	16.741	18.949	21.155	23.360	25.564	27.766	29.969
* OFFSET FROM 0° RDW 2 EAST	-3.206"	3.707"	-2.867"	3.276"	-2.620"	2.966"	-2.428"	2.744"
* OFFSET FROM 0° RDW 2 WEST	-3.993"	3.023"	-3.470"	2.735"	-3.110"	2.519"	-2.841"	2.362"
DEPTH FROM DATUM W TO STEP (REF. SEE SH. 9)	4.406	4.418	4.031	3.643	3.256	2.868	2.480	2.093
RDW 4 RAD.	15.080	17.290	19.497	21.703	23.908	26.112	28.315	30.517
* OFFSET FROM 0° RDW 4 EAST	-4.224"	2.817"	-3.671"	2.561"	-3.284"	2.367"	-2.994"	2.228"
* OFFSET FROM 0° RDW 4 WEST	-2.982"	3.920"	-2.679"	3.462"	-2.458"	3.129"	-2.287"	2.888"
DEPTH FROM DATUM W TO STEP (REF. SEE SH. 9)	4.309	4.322	3.934	3.546	3.159	2.771	2.383	1.996
RDW 6 RAD.	15.629	17.838	20.046	22.252	24.457	26.660	28.863	31.065
* OFFSET FROM 0° RDW 6 EAST	-3.245"	3.696"	-2.897"	3.275"	-2.643"	2.969"	-2.447"	2.748"
* OFFSET FROM 0° RDW 6 WEST	-3.976"	3.055"	-3.467"	2.761"	-3.111"	2.539"	-2.844"	2.379"
DEPTH FROM DATUM W TO STEP (REF. SEE SH. 9)	4.212	4.225	3.837	3.449	3.062	2.674	2.287	X
RDW 8 RAD.	16.177	18.387	20.594	22.800	25.005	27.209	29.412	X
* OFFSET FROM 0° RDW 8 EAST	-4.265"	2.811"	-3.700"	2.561"	-3.306"	2.370"	-3.012"	X
* OFFSET FROM 0° RDW 8 WEST	-2.972"	3.954"	-2.677"	3.488"	-2.460"	3.150"	-2.290"	X

* ALL DIMENSIONS HERE ARE BASIC

FOR MACHINING LUBRICANT USE ONLY
 ALKALINE DETERGENT LUBRICANT CIMSTAR 40
 OR EQUIVALENT APPROVED BY CORNELL LNS.

GENERAL NOTE:
 MACHINE ALL PARTS DESCRIBED IN DRAWING D-6057-005 (SH.1-15) USING DIMENSIONS PRINTED ON PARTS OR IN ASSOCIATED CHARTS. CAD FILE GEOMETRY MAY NOT AGREE WITH DIMENSIONS SHOWN.

ITEM	DWG. NO.	DESCRIPTION	G1	G2	G3	REMARKS	REV.
			QUANTITY				
PRINT DISTR.		PLOT DATE 01/25/00 CAD FILE NAME D-6057-005-15					
UNLESS OTHERWISE SPECIFIED							
DIMENSIONS ARE IN INCHES							
TOLERANCES ON:							
.00±.010							
.000±.005							
FRACTIONS ±1/64							
ANGLES ±0.5°							
ALL SURFACES 125							
CHECKED BY PETERSON	APPROVED BY PETERSON	DRAWN BY TMK	DRAWN FOR PETERSON	DATE 9/21/95	SCALE .75	D 6057-005	REV.

Cornell University
 Floyd R. Newman Laboratory of Nuclear Studies - Ithaca, NY 14853-5001

CLED PHASE III, DRIFT CHAMBER
 CONICAL ENDPLATE - MARKER HOLES
 LOCATION DIMENSION CHART

D 6057-005
 SH. NO. 15 CONT. ON FIN