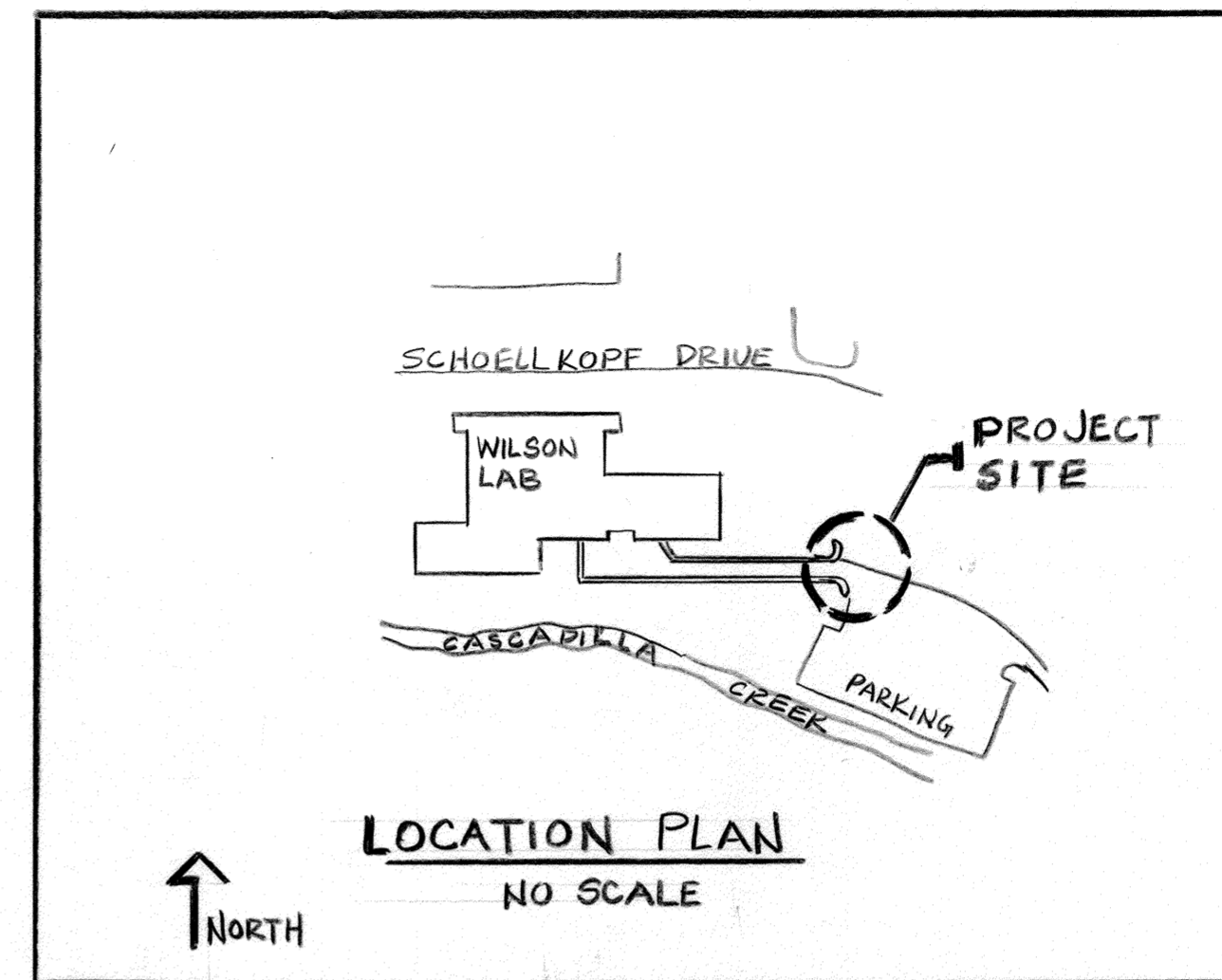
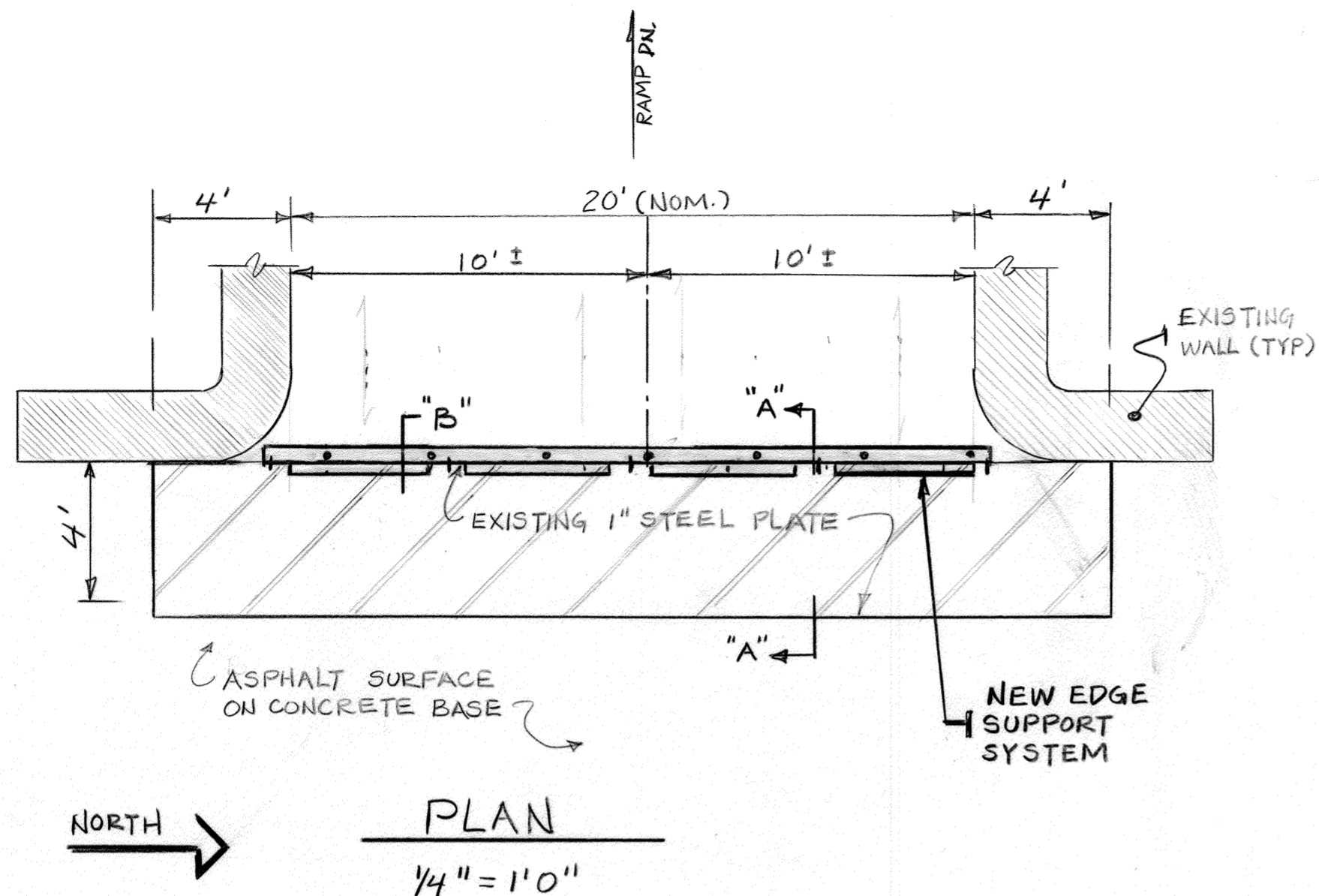


APPROVAL DIRECTOR	DATE
<i>Philip J. Cox</i>	12 Nov '87
DESIGNED BY	DATE
<i>Earl Hartman</i>	11 Nov '87
DRAWN BY	DATE
<i>Earl Hartman</i>	11 Nov '87
CHECKED BY	
ARCH	ENERGY
CIVIL	ENVIR. H
ELEC	LF.SFTY
MECH	PB.SFTY
STRUCT	USER

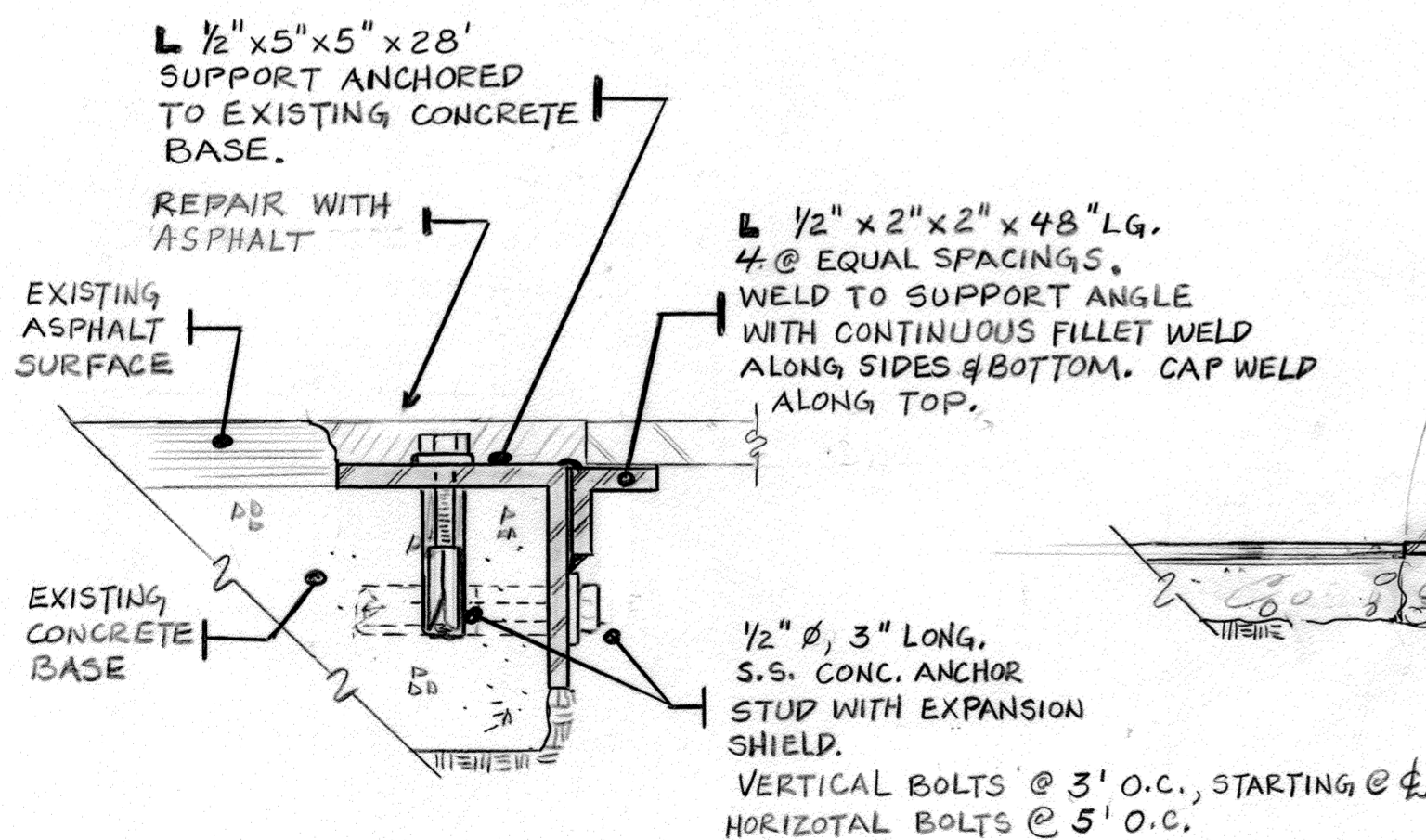


REV.	DATE	BY	DESCRIPTION

DRAWING TITLE
WILSON LAB.

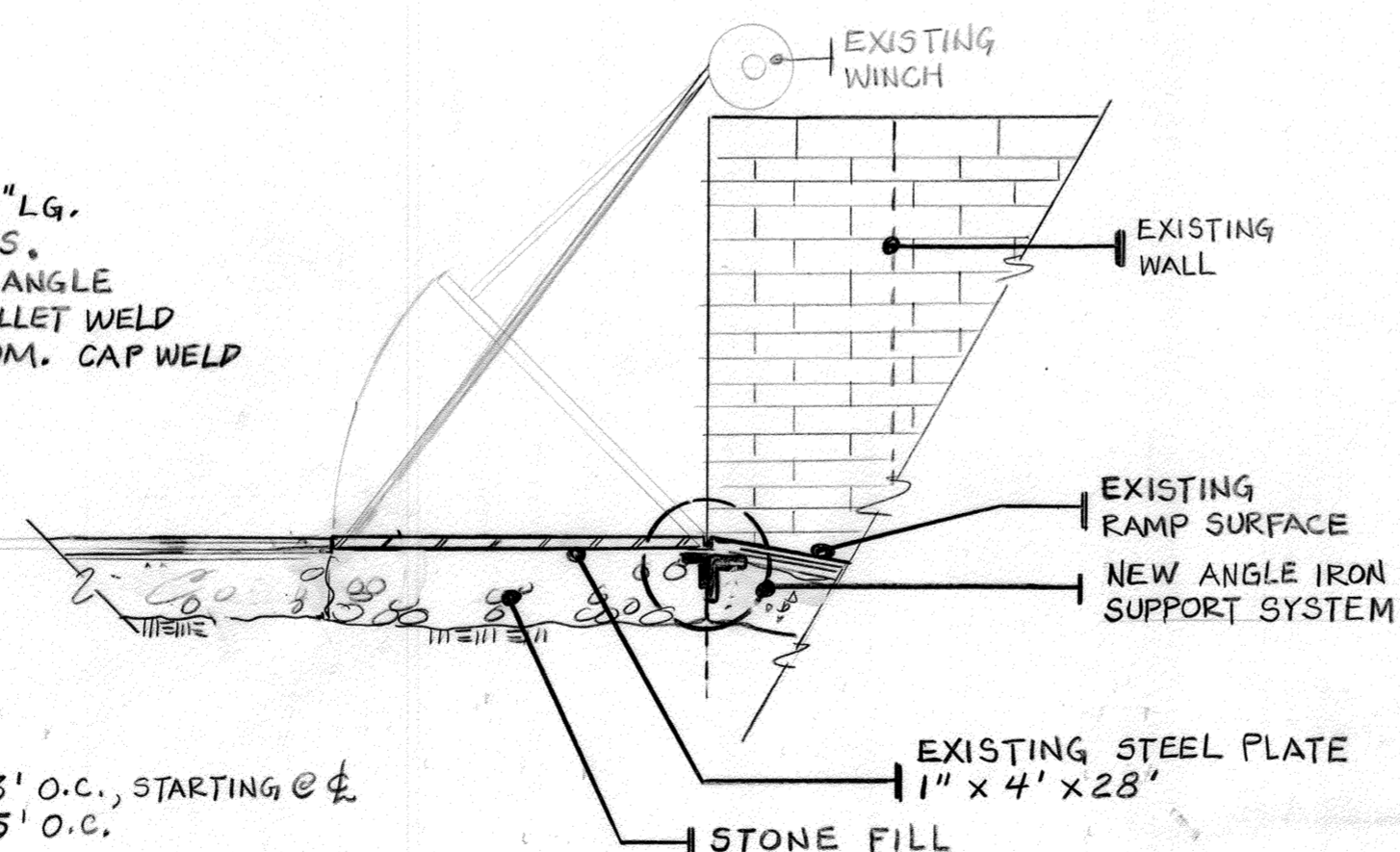
PROJECT
NEW SUPPORT FOR FLOOD GATE @ RAMP

LOCATION NO. 2085



ANGLE IRON SUPPORT-DETAIL "B"

NO SCALE



SECTION "A"

NO SCALE

NOTES:

REMOVE EXISTING ASPHALT WEARING SURFACE PARALLEL TO FLOOD GATE EDGE A MINIMUM OF 6" TO TOP OF EXISTING CONCRETE BASE.

EXCAVATE ALONG THE FACE OF EXISTING CONCRETE BASE A SUFFICIENT WIDTH TO ALLOW DRILLING AND PLACING OF ANCHOR BOLTS.

DRILL AND PLACE ALL ANCHOR STUDS. TORQUE TO MANUFACTURERS SPECIFICATIONS. FILL DRILL HOLES FROM SHIELDS TO TOP OF CONCRETE WITH 'POR-ROK'.

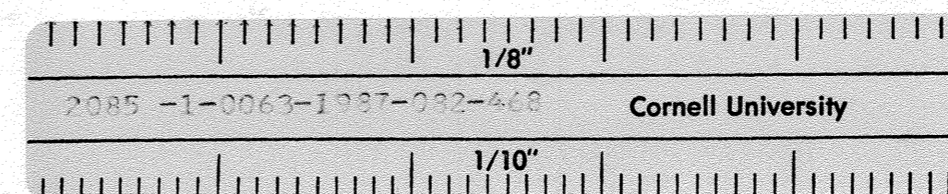
PLACE A 1/4" BED OF 'HYDROCID' BITUMINOUS COMPOUND FULL WIDTH AND LENGTH OF 5" x 5" SUPPORT ANGLE.

PLACE SUPPORT ANGLE AND TORQUE BOLTS REPAIR SURFACE BETWEEN ASPHALT AND GATE

ALL NEW STEEL WORK SHALL BE FABRICATED AND PAINTED IN THE SHOP. ANGLE SUPPORT SYSTEM CAN BE FABRICATED IN TWO 14' SECTIONS.

PAINT WITH TWO COATS OF 'RUST-OLEUM' 1060 HEAVY DUTY RUST INHIBITIVE PRIMER PER MANUFACTURERS SPECIFICATIONS

FINISH PAINT WITH TWO COATS 'RUST-OLEUM' 792 FINISH PER MANUFACTURERS SPECIFICATIONS.



SCALE AS NOTED	SHEET NO.
FILE NO. 82900	1
DRAWING NO. C-2620	1 of 1

